

**THE NETHERLANDS
(N E D E R L A N D)****COMMUNICATION**Concerning ⁽¹⁾:

- ~~approval granted~~
- approval extended
- ~~approval refused~~
- ~~approval withdrawn~~
- ~~production definitely discontinued~~

of a type of tyre for motor vehicles pursuant to Regulation number 54.

Approval number: E4*54R00/23*34632*05

1. Manufacturer's name and address : LLIT (THAILAND) CO., LTD.
911/9 Moo 5, Khaokhansong, Sriracha, Chonburi
20110, Thailand
2. Tyre type designation ⁽²⁾ :
 - 2.1. Brand name(s)/trademark(s) : LINGLONG; SHANLING; LEAO; Infinity;
Benchmark; ATLAS TIRE; BARKLEY;
GREEN MAX; CROSSWIND; BENCHMARK;
ZEETEX; HUBTRAC
 - 2.2. Trade description (s)/Commercial
name(s)/ : D905; LFL866; SFL866; AFL866; IFL866;
BFL866; LAU605; SAU605; AAU605; IAU605;
BAU605; BL220; LDL831; SDL831; ADL831;
IDL831; BDL831; KLT200; CWT20E; GRT818;
KLS200; CWS20E; KLD200; CWD20E;
GRT808; GRD816; AP-100[Ⓞ]; DRV-OS[Ⓞ];
DRV-OS[Ⓞ]; LLA78; BL212; BL808; ZOR1
EXTRA; REGIONAL S15; REGIONAL D12
3. If applicable, name and address of the
manufacturer's representative : Not applicable
4. Summarized description:
 - 4.1. Size of tyre : 235/75R17.5
 - 4.2. Category of use : ~~normal~~/snow/special ⁽¹⁾

Approval number: E4*54R00/23*34632*05

- 4.3. Structure : ~~diagonal (bias-ply)~~/radial ⁽¹⁾
- 4.4. Tyre class : ~~C2~~/C3 ⁽¹⁾
- 4.5. Speed category symbol:
- 4.5.1. nominal : M
- 4.5.2. additional (if applicable) : ---
- 4.6. Load-capacity indices:
- 4.6.1. Corresponding to nominal speed:
– single : 132
– twinned (dual) : 130
- 4.6.2. Corresponding to additional speed:
– single : ---
– twinned (dual) : ---
5. Technical service and, where applicable, test laboratory approved for purposes of approval or of verification of conformity : IDIADA Automotive Technology, S.A.
L'Albornar, P.O. Box 20
43710 Santa Oliva (Tarragona)
Spain
6. Date of report issued by that service : April 28, 2018
February 26, 2019
July 13, 2020
7. Number of report issued by that service : CN18080484
CN19020446
CN20070372
8. Reason(s) for extension (if applicable) : Addition of brand name and trade description;
Addition of another tyre construction
9. Any remarks : ---

Approval number: E4*54R00/23*34632*05

10. Place : Zoetermeer
11. Date : 29 July 2020
12. Signature :



13. Annexed to this communication is a list of documents in the approval file deposited at the administrative service having delivered the approval and which can be obtained upon request.
- Application form relating to ECE approval for a pneumatic tyre pursuant to Regulation number 54.
 - The drawing of the tyre's sidewalls, tread and dimensioned cross-section.
 - The test report as mentioned in item 7.

⁽¹⁾ Strike out what does not apply.

⁽²⁾ A list of brand name(s)/trademark(s) or Trade description(s)/ Commercial name(s) may be annexed to this communication.

IDIADA

TECHNICAL DOCUMENTATION



IDIADA CN20070372

APPLICATION FOR APPROVAL OF A TYPE OF PNEUMATIC TYRE ACCORDING TO ECE REGULATION No. 54, 00 SERIES OF AMENDMENTS

Reason of extension: modify the mold; add new trade mark; add new type designation;

1. Manufacturer's name and address	:LLIT(THAILAND) CO.,LTD. 911/9Moo 5,Khaokhansong,SrirachaChonburi 20110 ,Thailand LLIT(THAILAND) CO.,LTD.
2. Tyre type designation	
2.1 Brand-name(s)/trademark(s)	:LINGLONG; SHANLING; LEAO; Infinity; Benchmark; ATLAS TIRE; BARKLEY; GREEN MAX; CROSSWIND; BENCHMARK; ZEETEX; <u>HUBTRAC</u>
2.2 Trade description(s)/Commercial name(s)	:D905; LFL866; SFL866; AFL866; IFL866; BFL866; LAU605; SAU605; AA605; IAU605; BAU605; BL220; LDL831; SDL831; ADL831; IDL831; BDL831; KLT200; CWT20E; GRT818; KLS200; CWS20E; KLD200; CWD20E; GRT808; GRD816; AP-100 ^Q ; DRV-OS ^Q ; DRV-OS ^Q ; LLA78; BL212; BL808; ZORI EXTRA; <u>REGIONAL S15</u> ; <u>REGIONAL D12</u>
3. If applicable, name and address of manufacturer's representative	: not applicable
4. Summarised description,	
4.1. Tyre size designation	: 235/75R17.5
4.2. Category of use	normal/special/snow
4.3. Structure	diagonal (bias-ply)/radial
4.4. Speed category symbol	
4.4.1. Nominal	:M
4.4.2. Additional (if applicable)	not applicable
4.5. Load capacity indices	
4.5.1. corresponding to nominal speed	: single:132, twinned(dual):130
4.5.2. corresponding to additional speed	: single: --- , twinned(dual): ---
5. Overall dimensions	
overall section width	235
outer diameter	797
6. Factor 'x'	0.75
7. Ply-rating number for diagonal (bias-ply) tyres	Not applicable
8. Rims on which the tyre can be mounted	:7.50
9. Measuring rim and test rim	6.75
10. Tyre class	E2 / C3
11. State whether the tyre is	tubeless / tube-type
12. Inflation pressure and index for measuring and testing	see attached test report
13. Submitted for approval on (date)	Jun.16,2020

We herewith declare that we have not applied and will not apply for approval with another Contracting Party of the ECE for the same type of product.

MANUFACTURER'S STAMP

Signature :



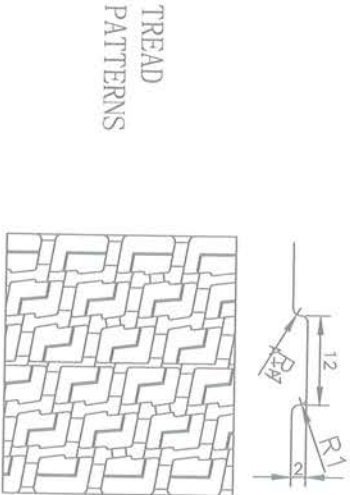
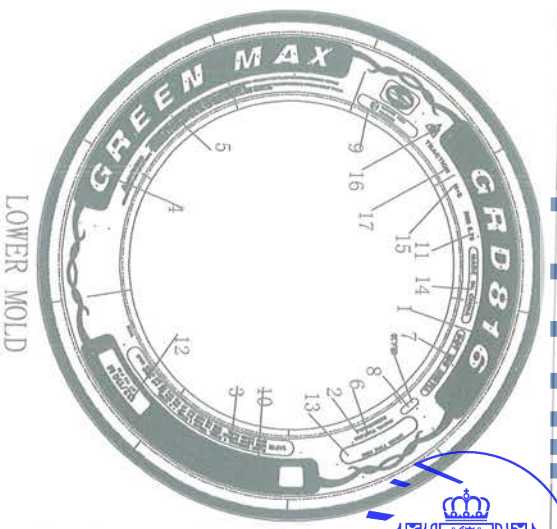
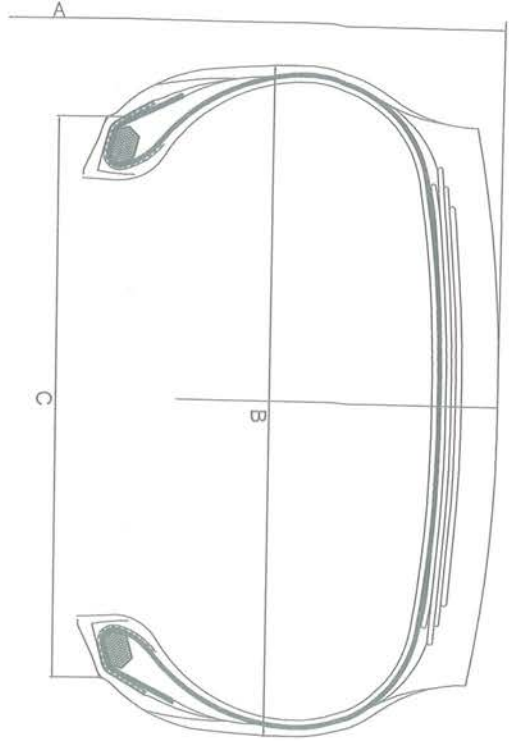
Name: Ma Xiaogang

THIS APPLICATION IS ACCOMPANIED BY:

- Application form, relating to ECE approval for pneumatic tyre pursuant Regulation No.54
- A drawing of the tyre's side wall, tread and dimensioned cross section.
- The test report.



iDiADA CN20070372



TREAD PATTERNS

TABLE 1

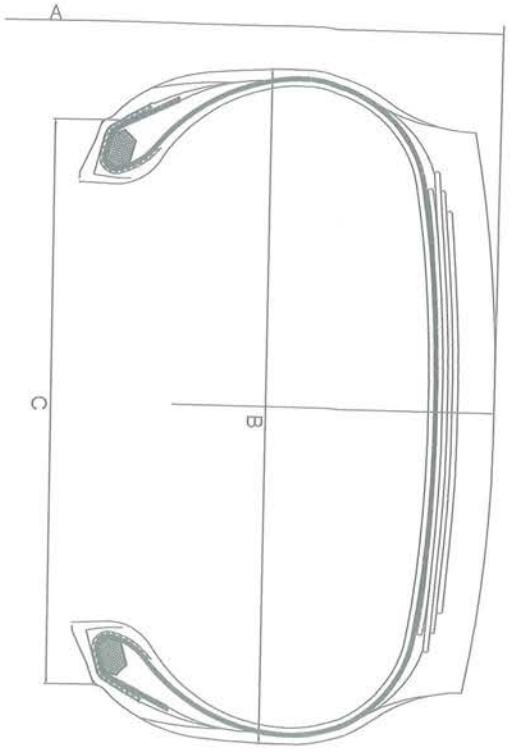
BRAND NAME	TREAD PATTERN NAME
GREEN MAX	GRD816

17	TRACTION					
16						
15	M+S					
14	MADE IN THAILAND					
13	BRAND TYRE HERE					
12	132/130 M AT 112 PSI					
11	RIM 6.75					
10	235/75R17.5					
9	0034632					
8						
7	DOT				**** (PRODUCTION DATE)	
6	RADIAL TUBELESS					
5	WARNING.....					
4	PLEASE SEE THE TABLE 1 ON THE LEFT					
3	PLIES: SIDEWALL 1 STEEL TREAD 1 STEEL+4 STEEL					
	MAX LOAD: SINGLE 2000 kg (4410 LBS) AT 775 kPa (112 psi) COLD LR. G					
	MAX LOAD: DUAL 1900 kg (4190 LBS) AT 775 kPa (112 psi) COLD					
2	REGROOVABLE					
1	PLEASE SEE THE TABLE 1 ON THE LEFT					
	UPPER MOLD				LOWER MOLD	
235/75R17.5	132/130	M	TL	797	233	171.5
TYRE SIZE	LOAD INDEX	SPEED SYMBOL	TYPE	A (mm)	B (mm)	C (mm)

Approve by:

Check by:

Draft by:



UPPER MOLD

LOWER MOLD

TREAD PATTERNS

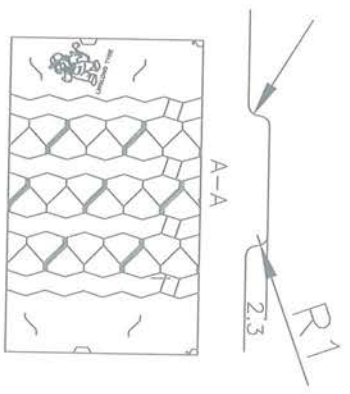


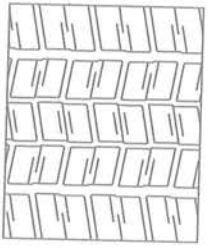
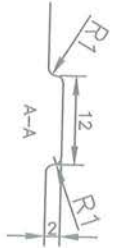
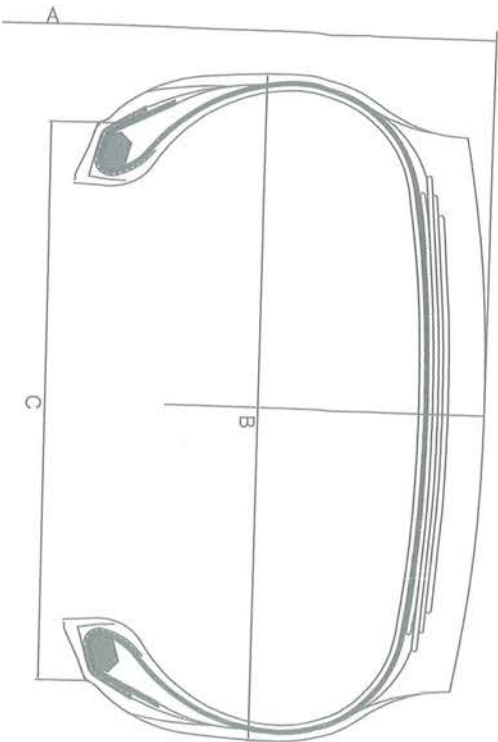
TABLE 1	
BRAND NAME	TREAD PATTERN NAME
GREEN MAX	GRT808

16	A					
15	M+S					
14	MADE IN THAILAND					
13	BRAND TYRE HERE					
12	132/130 M AT 112 PSI					
11	RIM 6.75					
10	235/75R17.5					
9	Ⓢ 0034632					
8						
7	DOT				**** (PRODUCTION DATE)	
6	RADIAL TUBELESS					
5	WARNING.....					
4	PLEASE SEE THE TABLE 1 ON THE LEFT					
3	PLIES: SIDEWALL 1 STEEL TREAD 1 STEEL+4 STEEL MAX LOAD: SINGLE 2000 kg (4410 lbs) AT 775 kPa (112 psi) COLD L.R. G MAX LOAD: DUAL 1900 kg (4190 lbs) AT 775 kPa (112 psi) COLD					
2	REGROOVABLE					
1	PLEASE SEE THE TABLE 1 ON THE LEFT					
	UPPER MOLD				LOWER MOLD	
235/75R17.5	132/130	M	TL	797	233	171.5
TYRE SIZE	LOAD INDEX	SPEED SYMBOL	TYPE	A (mm)	B (mm)	C (mm)

Approve by: *Handwritten signature*

Check by: *Handwritten signature*

Draft by: *Handwritten signature*



TREAD PATTERNS

TABLE 1

BRAND NAME	TREAD PATTERN NAME
LINGLONG	KLD200
SHANLING	KLD200
LEAO	KLD200
Infinity	KLD200
BENCHMARK	KLD200
CROSSWIND	CWD20E



UPPER MOLD

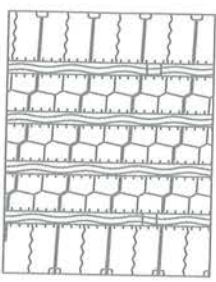
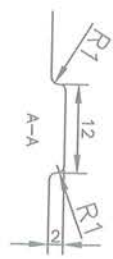
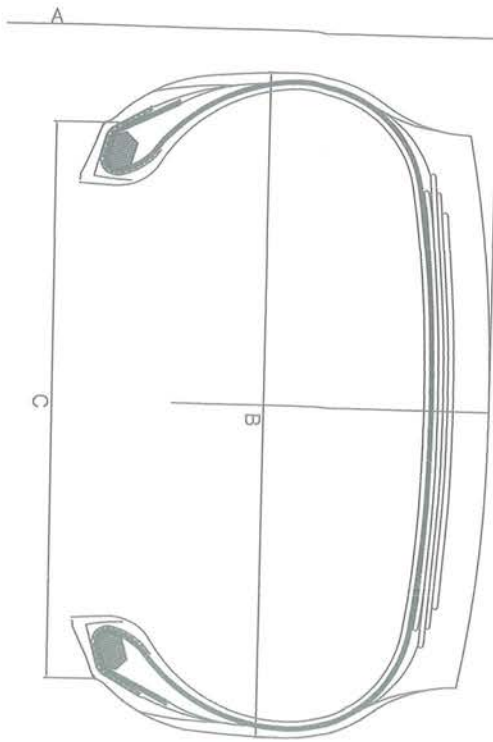
LOWER MOLD

17	TRACTION					
16						
15	M+S					
14	MADE IN THAILAND					
13	BRAND TYRE HERE					
12	132/130 M AT 112 PSI					
11	RIM 6.75					
10	235/75R17.5					
9	0034632					
8		**** (PRODUCTION DATE)				
7	DOT					
6	RADIAL TUBELESS					
5	WARNING.....					
4	PLEASE SEE THE TABLE 1 ON THE LEFT					
3	PLIES: SIDEWALL 1 STEEL TREAD 1 STEEL+4 STEEL MAX LOAD: SINGLE 2000 kg (4410 lbs) AT 775 kPa (112 psi) COLD LR. G MAX LOAD: DUAL 1900 kg (4190 lbs) AT 775 kPa (112 psi) COLD					
2	REGROOVABLE					
1	PLEASE SEE THE TABLE 1 ON THE LEFT					
	UPPER MOLD	LOWER MOLD				
235/75R17.5	132/130	M	TL	797	233	171.5
TYRE SIZE	LOAD INDEX	SPEED SYMBOL	TYPE	A (mm)	B (mm)	C (mm)

Approve by:

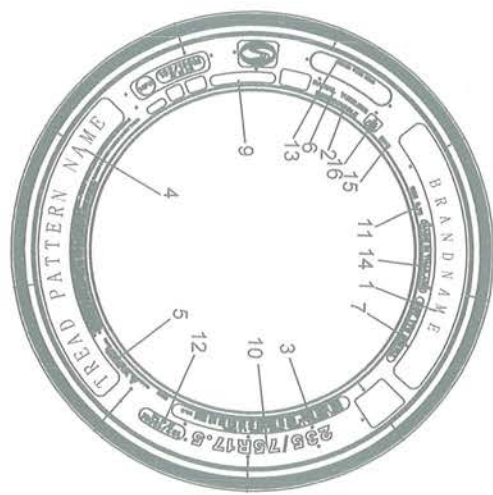
Check by:

Draft by:

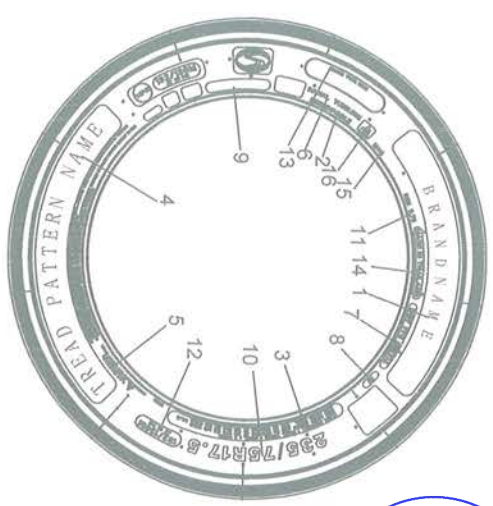


TREAD PATTERNS

TABLE 1	BRAND NAME	TREAD PATTERN NAME
	LINGLONG	KL.S200
	SHANLING	KL.S200
	LEAO	KL.S200
	Infinity	KL.S200
	BENCHMARK	KL.S200
	CROSSWIND	CWS20E



UPPER MOLD



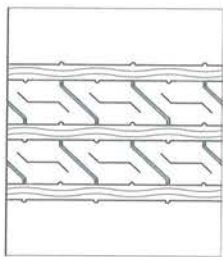
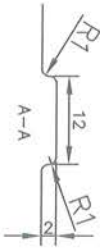
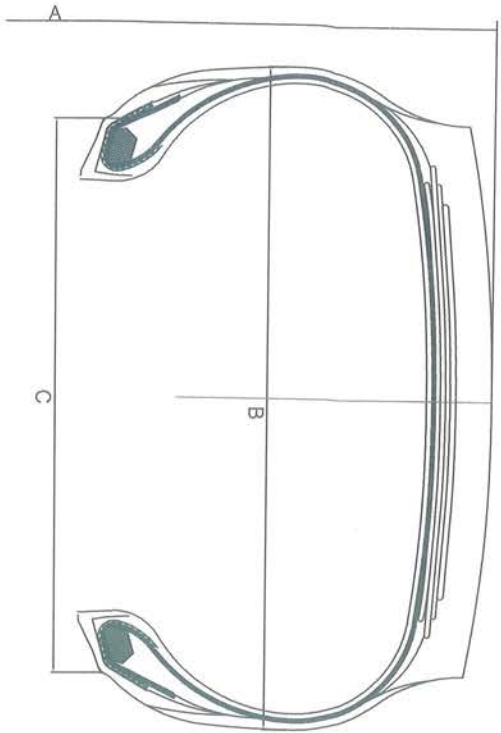
LOWER MOLD

16		M+S				
15		MADE IN THAILAND				
14		BRAND TYRE HERE				
13		132/130 M AT 112 PSI				
12		RIM 6.75				
11		235/75R17.5				
10		0034632				
9		DOT				**** (PRODUCTION DATE)
8		RADIAL TUBELESS				
7		WARNING.....				
6		PLEASE SEE THE TABLE 1 ON THE LEFT				
5		MAX LOAD: SINGLE 2000 kg (4410 lbs) AT 775 kPa (112 psi) COLD L.R. C				
4		MAX LOAD: DUAL 1900 kg (4190 lbs) AT 775 kPa (112 psi) COLD				
3		REGROOVABLE				
2		PLEASE SEE THE TABLE 1 ON THE LEFT				
1		UPPER MOLD		LOWER MOLD		
	235/75R17.5	132/130	M	TL	797	233
	TYRE SIZE	LOAD INDEX	SPEED SYMBOL	TYPE	A (mm)	B (mm)
						171.5
						C (mm)

Approve by:

Check by:

Draft by:



TREAD PATTERNS

TABLE 1

BRAND NAME	TREAD PATTERN NAME
LINGLONG	KL.T200
SHANLING	KL.T200
LEAO	KL.T200
Infinity	KL.T200
BENCHMARK	KL.T200
CROSSWIND	CWT20E



UPPER MOLD

LOWER MOLD

15	M+S					
14	MADE IN THAILAND					
13	BRAND TYRE HERE					
12	132/130 M AT 112 PSI					
11	RIM 6.75					
10	235/75R17.5					
9	Ⓢ 0034632					
8						***** (PRODUCTION DATE)
7	DOT					
6	RADIAL TUBELESS					
5	WARNING.....					
4	PLEASE SEE THE TABLE 1 ON THE LEFT					
3	PLIES: SIDEWALL, 1 STEEL, TREAD 1 STEEL+4 STEEL. MAX LOAD: SINGLE 2000 kg (4410 lbs) AT 775 kPa (112 psi) COLD LR.G MAX LOAD: DUAL 1900 kg (4190 lbs) AT 775 kPa (112 psi) COLD					
2	REGROOVABLE					
1	PLEASE SEE THE TABLE 1 ON THE LEFT					
		UPPER MOLD		LOWER MOLD		
235/75R17.5	132/130	M	TL	797	233	171.5
TYRE SIZE	LOAD INDEX	SPEED SYMBOL	TYPE	A (mm)	B (mm)	C (mm)

Approve by:

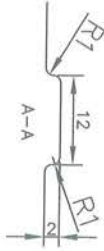
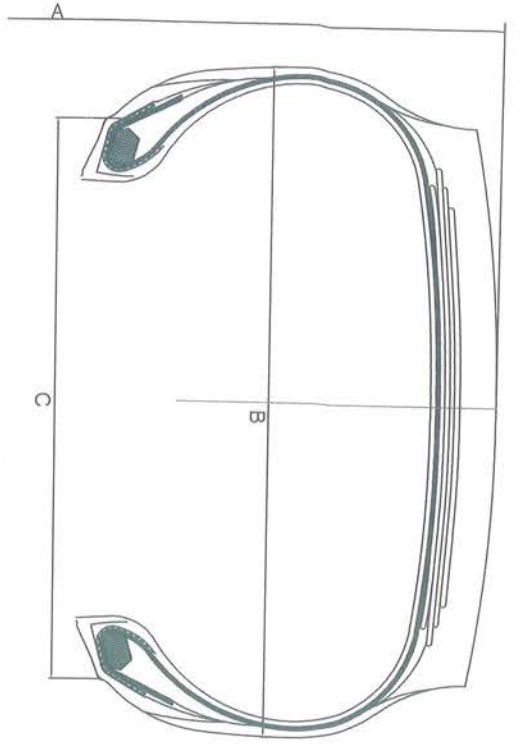
S.1009

Check by:

jit

Drawn by:

杨梅



TREAD PATTERNS

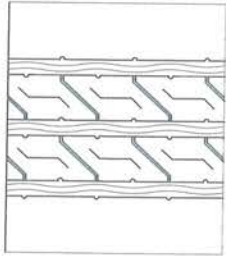
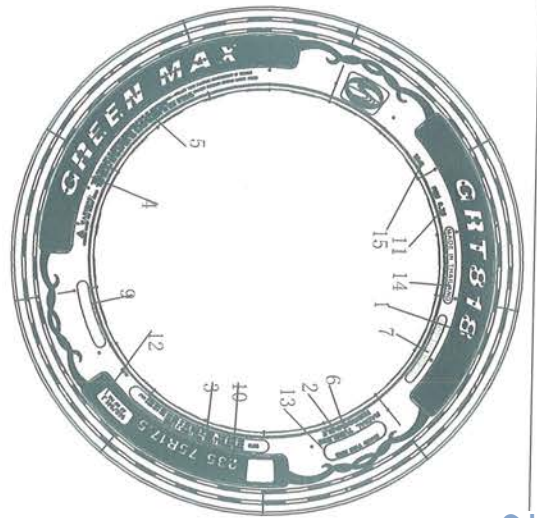


TABLE 1

BRAND NAME	TREAD PATTERN NAME
GREEN MAX	GRT818



UPPER MOLD



LOWER MOLD

15	M+S					
14	MADE IN THAILAND					
13	BRAND TYRE HERE					
12	132/130 M AT 112 PSI					
11	RIM 6.75					
10	235/75R17.5					
9	Ⓢ 0034632					
8						**** (PRODUCTION DATE)
7	DOT					
6	RADIAL TUBELESS					
5	WARNING.....					
4	PLEASE SEE THE TABLE 1 ON THE LEFT					
3	PLIES: SIDEWALL 1 STEEL TREAD 1 STEEL+4 STEEL MAX LOAD: SINGLE 2000 kg (4410 lbs) AT 775 kPa (112 psi) COLLD LR. G MAX LOAD: DUAL 1900 kg (4190 lbs) AT 775 kPa (112 psi) COLLD					
2	REGROOVABLE					
1	PLEASE SEE THE TABLE 1 ON THE LEFT					
	UPPER MOLD					LOWER MOLD
235/75R17.5	132/130	M	TL	797	233	171.5
TYRE SIZE	LOAD INDEX	SPEED SYMBOL	TYPE	A (mm)	B (mm)	C (mm)

Approve by:

Handwritten signature

Check by:

Handwritten signature

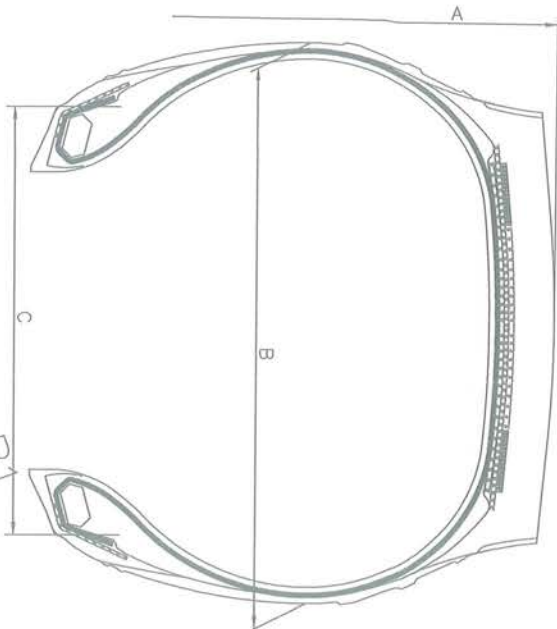
Drawn by:

Handwritten signature

21301002NC

YVVIID





TREAD PATTERNS

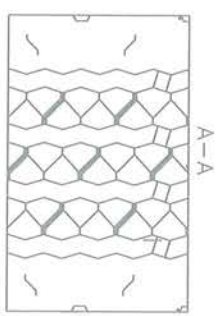
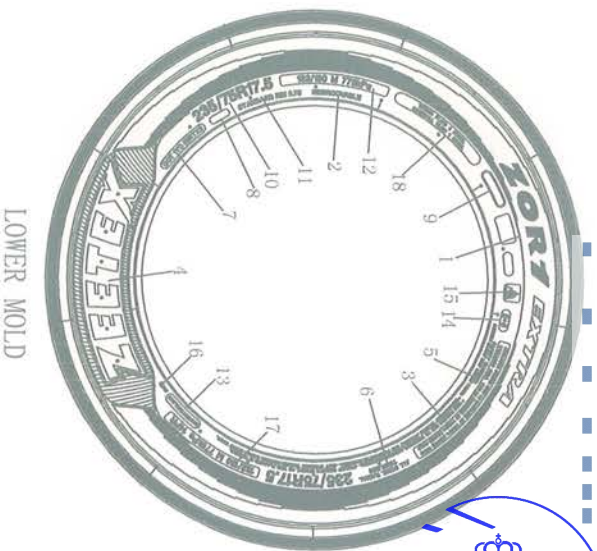
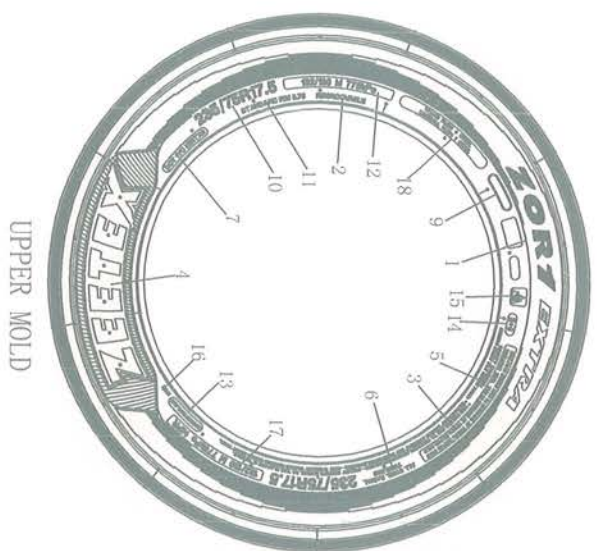


TABLE 1

BRAND NAME	TREAD PATTERN NAME
ZEETEX	ZORI EXTRA



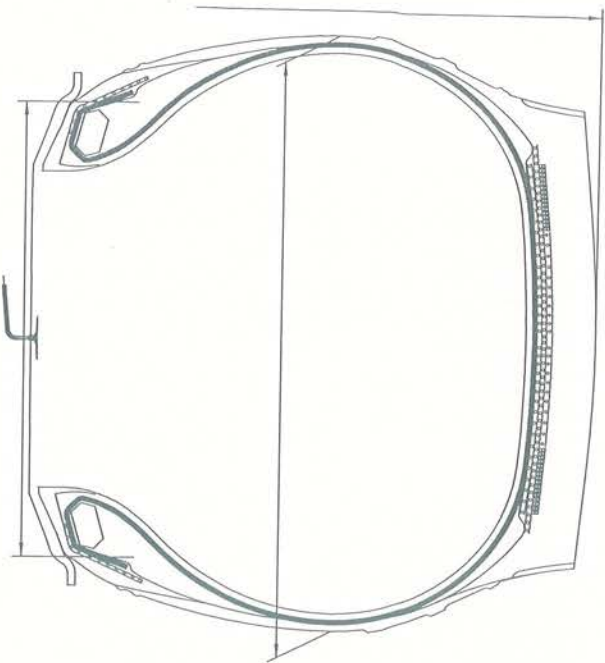
- 18 TREAD PILES 4 STEEL SIDEWALL PILES 1 STEEL
- 17 132/130 M 775 kPa 14PR
- 16 ***** (MOLD NUMBER)
- 15 A
- 14 M+S
- 13 MADE IN THAILAND
- 12 132/130 M 775 kPa
- 11 STANDARD RIM 6.75
- 10 235/75R17.5
- 9 0034632
- 8
- 7 DOT
- 6 ALL STEEL RADIAL TUBELESS
- 5 WARNING.....
- 4 PLEASE SEE THE TABLE 1 ON THE LEFT
- 3 MAX LOAD: SINGLE 2000 kg (4410 lbs) AT 775 kPa (112 psi) COLD
MAX LOAD: DUAL 1900 kg (4190 lbs) AT 775 kPa (112 psi) COLD
- 2 REGROOVABLE
- 1 PLEASE SEE THE TABLE 1 ON THE LEFT

235/75R17.5	132/130	M	TL	797	233	171.5
TYRE SIZE	LOAD INDEX	SPEED SYMBOL	TYPE	A (mm)	B (mm)	C (mm)
UPPER MOLD				LOWER MOLD		

Approve by:

Check by:

Draft by:



TREAD PATTERNS

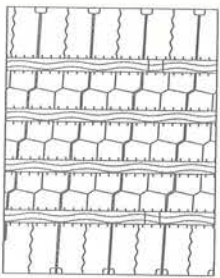
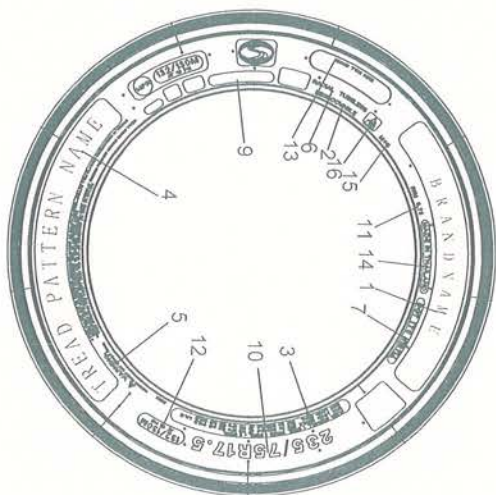
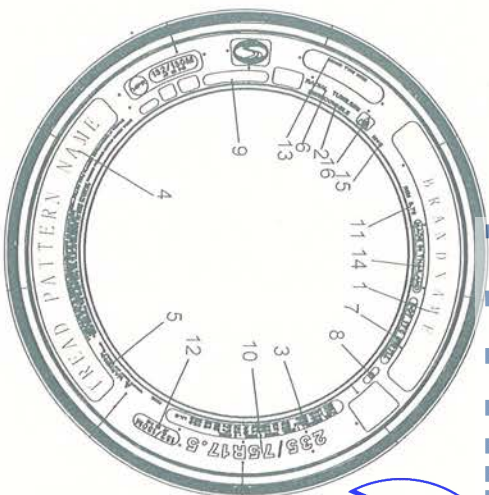


TABLE 1	BRAND NAME	TREAD PATTERN NAME
	LINGLONG	KLS200
	SHANLING	KLS200
	LEAO	KLS200
	Infinity	KLS200
	BENCHMARK	KLS200
	CROSSWIND	CWS20E



UPPER MOLD



LOWER MOLD

16		M+S
15		MADE IN THAILAND
14		BRAND TYRE HERE
13		132/130 M AT 112 PSI
12		RIM 6.75
11		235/75R17.5
10		Ⓢ4 0034632
9		
8		***** (PRODUCTION DATE)
7		DOT
6		RADIAL TUBELESS
5		WARNING.....
4		PLEASE SEE THE TABLE 1 ON THE LEFT
3		PLIES: SIDEWALL 1 STEEL TREAD 1 STEEL 3 STEEL MAX LOAD: SINGLE 2000 kg (4410 lbs) AT 775 kPa (112 psi) COLD LR G MAX LOAD: DUAL 1900 kg (4190 lbs) AT 775 kPa (112 psi) COLD
2		REGROOVABLE
1		PLEASE SEE THE TABLE 1 ON THE LEFT
		UPPER MOLD
		LOWER MOLD

TYRE SIZE	LOAD INDEX	SPEED SYMBOL	TYPE	A (mm)	B (mm)	C (mm)
235/75R17.5	132/130	M	TL	797	233	171.5

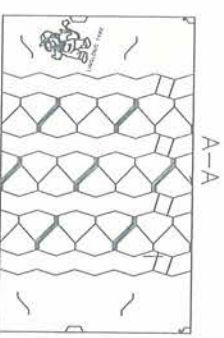
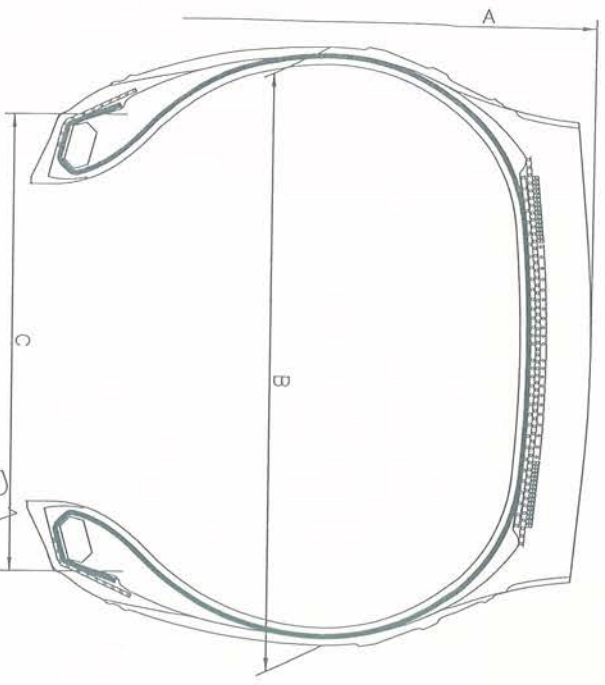
Approve by:

Check by:

Draft by:

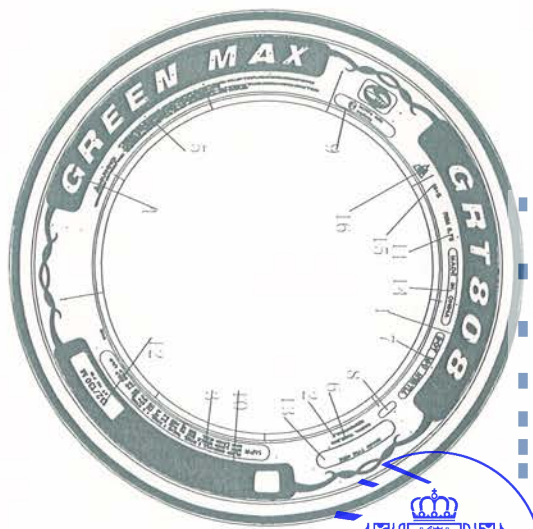
230L002NC VAVI





TREAD PATTERNS

TABLE 1	
BRAND NAME	TREAD PATTERN NAME
GREEN MAX	GRT808



UPPER MOLD

LOWER MOLD

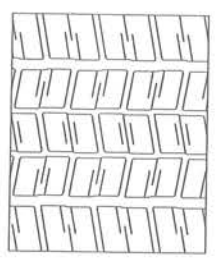
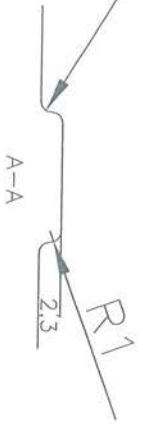
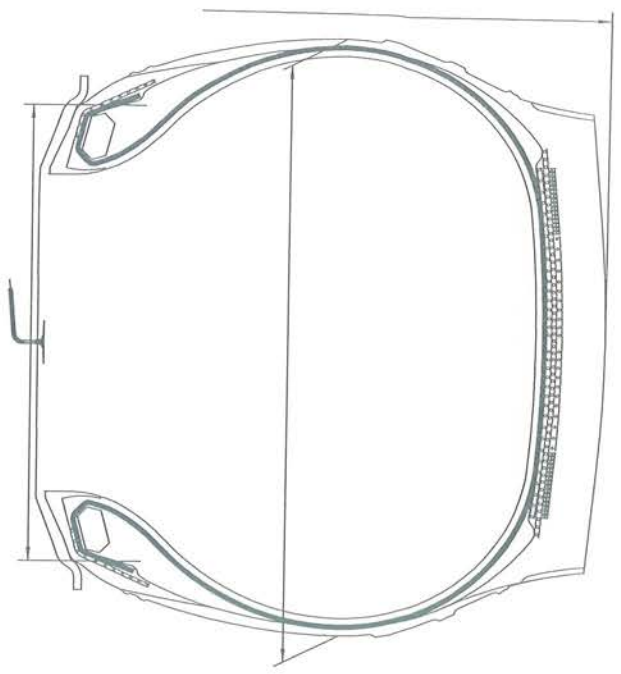
16						
15	M+S					
14	MADE IN THAILAND					
13	BRAND TYRE HERE					
12	132/130 M AT 112 PSI					
11	RIM 6.75					
10	235/75R17.5					
9	0034632					
8	DOT				***** (PRODUCTION DATE)	
7	RADIAL TUBELESS					
6	WARNING.....					
5	PLEASE SEE THE TABLE 1 ON THE LEFT					
4	PLIES: SIDEWALL 1 STEEL TREAD 1 STEEL+3 STEEL					
3	MAX LOAD: SINGLE 2000 kg (4410 lbs) AT 775 kPa (112 psi) COLD LR. G					
2	MAX LOAD: DUAL 1900 kg (4190 lbs) AT 775 kPa (112 psi) COLD					
1	REGROOVABLE					
	PLEASE SEE THE TABLE 1 ON THE LEFT					
	UPPER MOLD				LOWER MOLD	
235/75R17.5	132/130	M	TL	797	233	171.5

TYRE SIZE	LOAD INDEX	SPEED SYMBOL	TYRE TYPE	A (mm)	B (mm)	C (mm)
-----------	------------	--------------	-----------	--------	--------	--------

Approve by:

Check by:

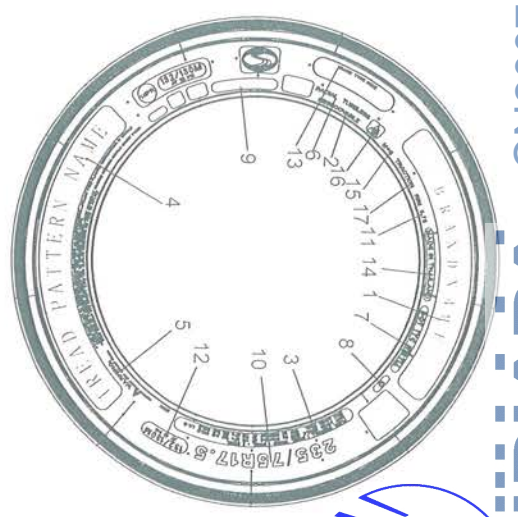
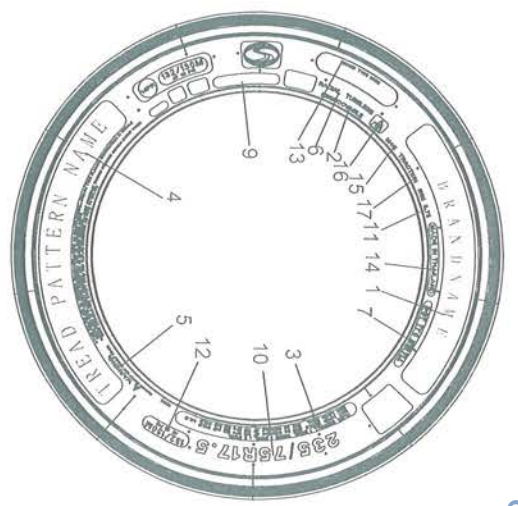
Draft by:



TREAD PATTERNS



TABLE 1

BRAND NAME	TREAD PATTERN NAME
LINGLONG	KLD200
SHANLING	KLD200
LEAO	KLD200
Infinity	KLD200
BENCHMARK	KLD200
CROSSWIND	CWD20E



UPPER MOLD

LOWER MOLD

17	TRACTION					
16	 M+S					
14	MADE IN THAILAND					
13	BRAND TYRE HERE					
12	132/130 M AT 112 PSI					
11	RIM 6.75					
10	235/75R17.5					
9	 0034632					
8						
7	DOT					***** (PRODUCTION DATE)
6	RADIAL TUBELESS					
5	WARNING.....					
4	PLEASE SEE THE TABLE 1 ON THE LEFT					
3	PLIES: SIDEWALL 1 STEEL TREAD 1 STEEL+3 STEEL MAX LOAD: SINGLE 2000 kg (4410 lbs) AT 775 kPa (112 psi) COLD LR.G MAX LOAD: DUAL 1900 kg (4190 lbs) AT 775 kPa (112 psi) COLD					
2	REGROOVABLE					
1	PLEASE SEE THE TABLE 1 ON THE LEFT					
	UPPER MOLD					LOWER MOLD
235/75R17.5	132/130	M	TL	797	233	171.5
TYRE SIZE	LOAD INDEX	SPEED SYMBOL	TYPE	A (mm)	B (mm)	C (mm)

Approve by:

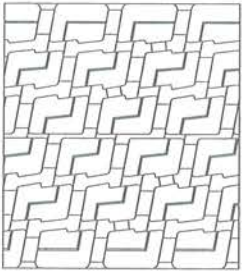
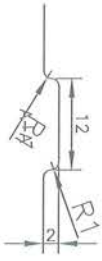
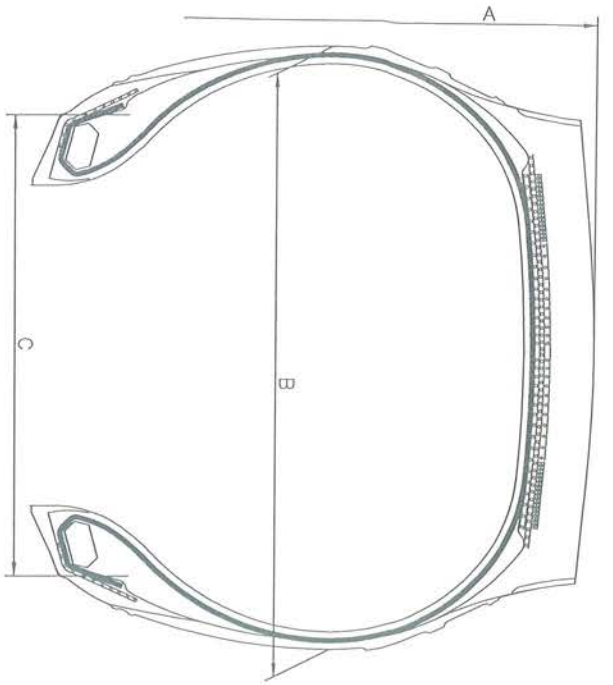
[Handwritten signature]

Check by:

[Handwritten signature]

Draft by:

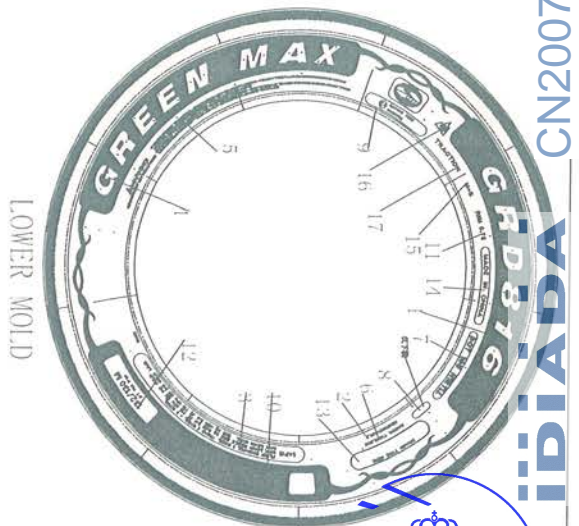
[Handwritten signature]



TREAD PATTERNS

TABLE 1

BRAND NAME	TREAD PATTERN NAME
GREEN MAX	GRD816



17	TRACTION						
16	M+S						
15	MADE IN THAILAND						
14	BRAND TYRE HERE						
13	132/130 M AT 112 PSI						
12	RIM 6.75						
11	235/75R17.5						
10	0034632						
9	DOT						
8	RADIAL TUBELESS						
7	WARNING.....						
6	PLEASE SEE THE TABLE 1 ON THE LEFT						
5	PLIES: SIDEWALL 1 STEEL TREAD 1 STEEL+3 STEEL						
4	MAX LOAD: SINGLE 2000 kg (4410 LBS) AT 775 kPa (112 psi) COLD L.R.G						
3	MAX LOAD: DUAL 1900 kg (4190 LBS) AT 775 kPa (112 psi) COLD						
2	REGROOVABLE						
1	PLEASE SEE THE TABLE 1 ON THE LEFT						
	UPPER MOLD						
	LOWER MOLD						
	TYRE SIZE	LOAD INDEX	SPEED SYMBOL	TYRE TYPE	A (mm)	B (mm)	C (mm)
	235/75R17.5	132/130	M	T.L.	797	233	171.5

Approve by:

[Signature]

Check by:

[Signature]

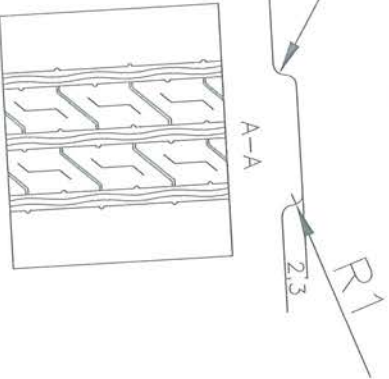
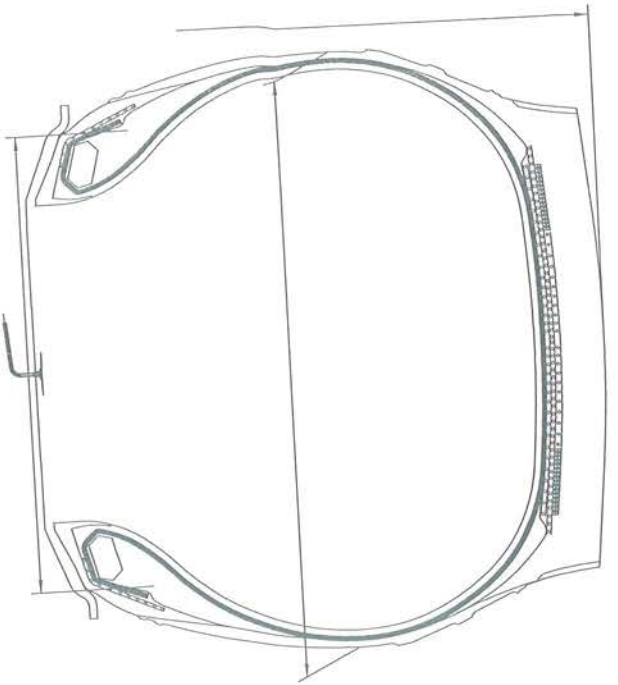
Draft by:

[Signature]

21301002NC

WIPIDA





TREAD PATTERNS

TABLE 1	TREAD PATTERN NAME
BRAND NAME	KL.T200
LINGLONG	KL.T200
SHANLING	KL.T200
LEAO	KL.T200
Infinity	KL.T200
BENCIMARK	KL.T200
CROSSWIND	CWT20E



UPPER MOLD



LOWER MOLD

15	M+S						
14	MADE IN THAILAND						
13	BRAND TYRE HERE						
12	132/130 M AT 112 PSI						
11	RIM 6.75						
10	235/75R17.5						
9	ⓔ4 0034632						
8						***** (PRODUCTION DATE)	
7	DOT						
6	RADIAL TUBELESS						
5	WARNING.....						
4	PLEASE SEE THE TABLE 1 ON THE LEFT						
3	PLIES: SIDEWALL: 1 STEEL TREAD: 1 STEEL+3 STEEL MAX LOAD: SINGLE 2000 kg (4410 lbs) AT 775 kPa (112 psi) COLD LR.G MAX LOAD: DUAL 1900 kg (4190 lbs) AT 775 kPa (112 psi) COLD						
2	REGROOVABLE						
1	PLEASE SEE THE TABLE 1 ON THE LEFT						
	UPPER MOLD					LOWER MOLD	
	235/75R17.5	132/130	M	TL	797	233	171.5
	TYRE SIZE	LOAD INDEX	SPEED SYMBOL	TYPE	A (mm)	B (mm)	C (mm)

Approve by:

[Signature]

Check by:

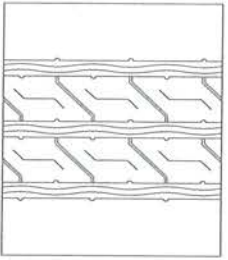
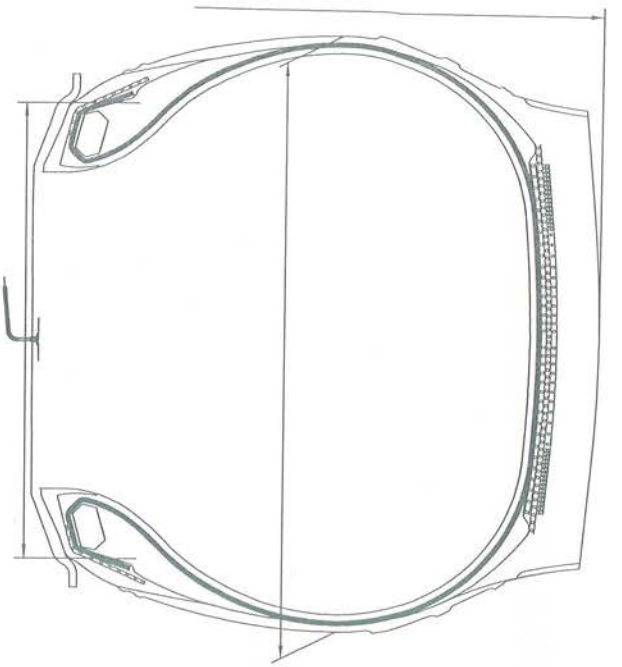
[Signature]

Draft by:

[Signature]

21301002NC VADIA

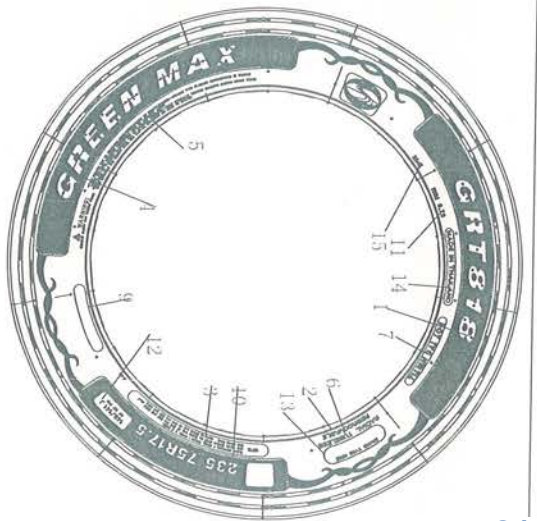




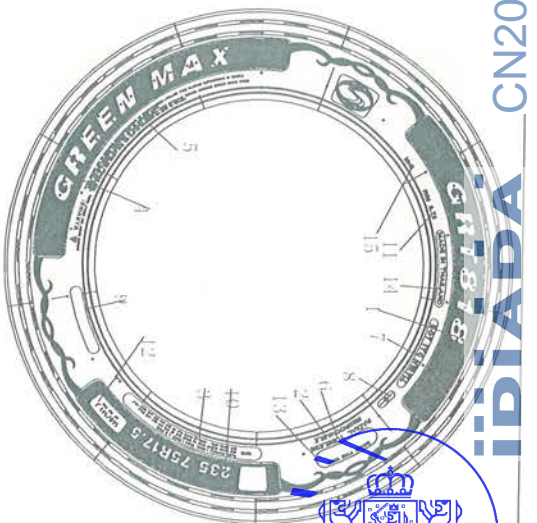
TREAD PATTERNS

TABLE 1

BRAND NAME	TREAD PATTERN NAME
GREEN MAX	GRT818



UPPER MOLD



LOWER MOLD

15	M+S					
14	MADE IN THAILAND					
13	BRAND TYRE HERE					
12	132/130 M AT 112 PSI					
11	RIM 6.75					
10	235/75R17.5					
9	Ⓜ 0034632					
8					***** (PRODUCTION DATE)	
7	DOT					
6	RADIAL TUBELESS					
5	WARNING.....					
4	PLEASE SEE THE TABLE 1 ON THE LEFT					
3	PLIES: SIDEWALL 1 STEEL TREAD 1 STEEL+3 STEEL MAX LOAD: SINGLE 2000 kg (4410 lbs) AT 775 kPa (112 psi) COLD LR. G MAX LOAD: DUAL 1900 kg (4190 lbs) AT 775 kPa (112 psi) COLD					
2	REGROOVABLE					
1	PLEASE SEE THE TABLE 1 ON THE LEFT					
	UPPER MOLD				LOWER MOLD	
235/75R17.5	132/130	M	TL	797	233	171.5

TYRE SIZE	LOAD INDEX	SPEED SYMBOL	TYPE	A (mm)	B (mm)	C (mm)
-----------	------------	--------------	------	--------	--------	--------

Approve by:

P. J.

Check by:

张艳

Draft by:

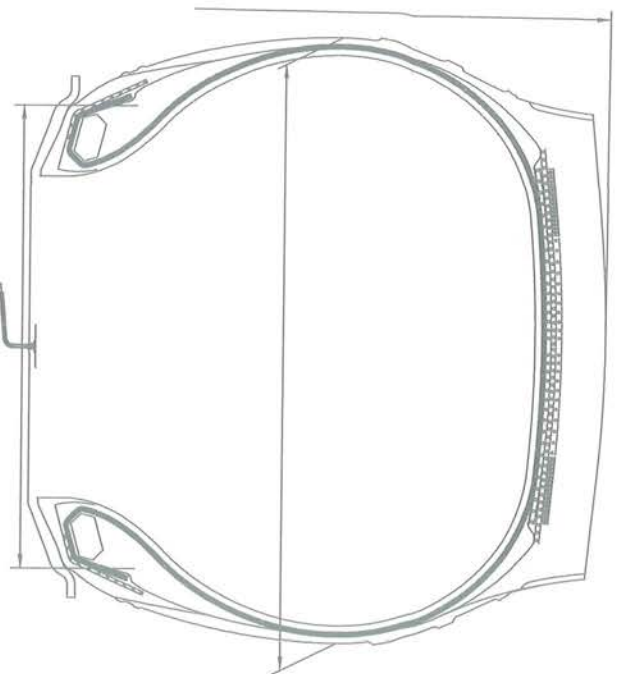
李达

21301002NC

AVIADA



RDW



TREAD PATTERNS

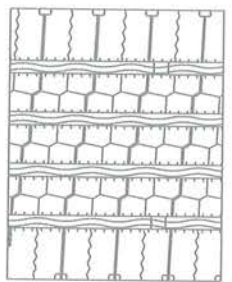
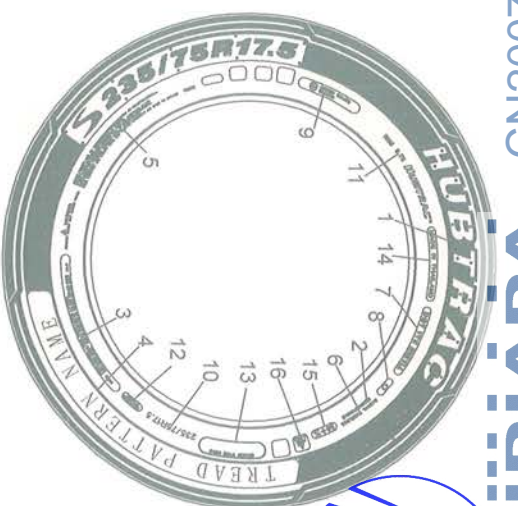


TABLE 1	
BRAND NAME	TREAD PATTERN NAME
HUBTRAC	REGIONAL S15



UPPER MOLD



LOWER MOLD

16	MA
15	M+S
14	MADE IN THAILAND
13	BRAND TYRE HERE
12	132/130 M AT 775 kPa
11	RIM 6.75
10	235/75R17.5
9	E4 0034632
8	
7	DOT
6	RADIAL TUBELESS
5	WARNING.....
4	PLEASE SEE THE TABLE 1 ON THE LEFT
3	PLIES: SIDEWALL 1 STEEL, TREAD 1 STEEL+3 STEEL, 14PR MAX LOAD: SINGLE 2000 kg (4410 lbs) AT 775 kPa (112 psi) COLD LR, G MAX LOAD: DUAL 1900 kg (4190 lbs) AT 775 kPa (112 psi) COLD
2	REGROOVABLE
1	PLEASE SEE THE TABLE 1 ON THE LEFT
	UPPER MOLD
	LOWER MOLD

235/75R17.5	132/130	M	TL	797	233	171.5
TYRE SIZE	LOAD INDEX	SPEED SYMBOL	TYPE	A (mm)	B (mm)	C (mm)

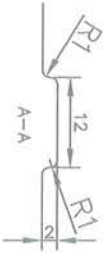
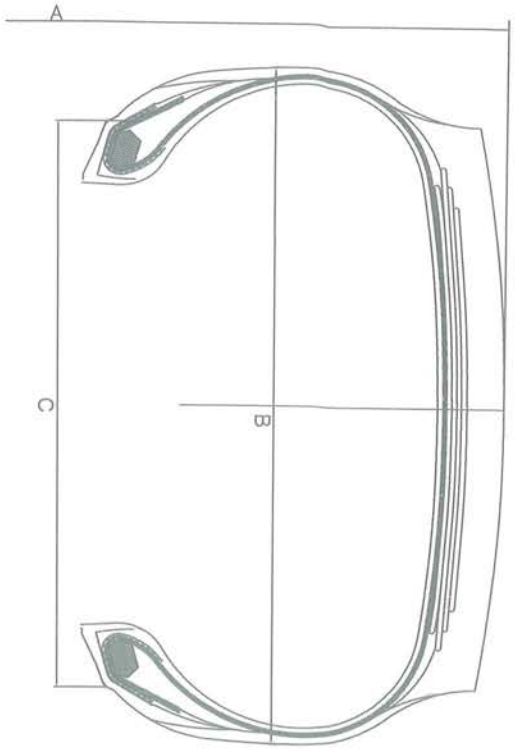
Approve by:

Check by:

Draft by:

2302002NC VVÄIDI





TREAD PATTERNS

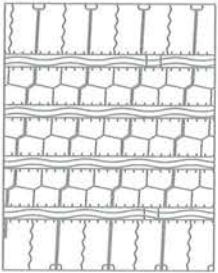
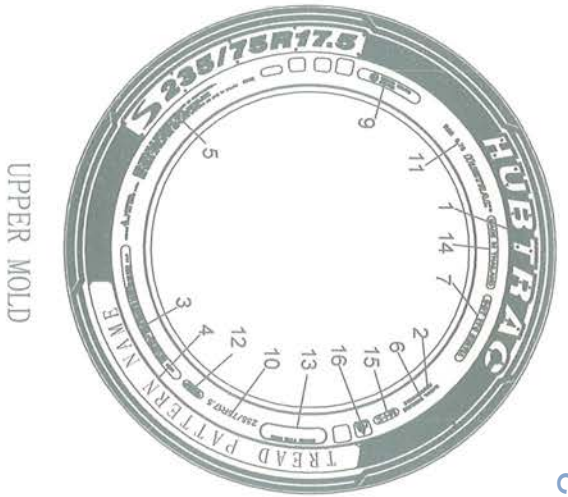


TABLE 1

BRAND NAME	TREAD PATTERN NAME
HUBTRAC	REGIONAL S15



UPPER MOLD



LOWER MOLD

16							
15	M+S						
14	MADE IN THAILAND						
13	BRAND TYRE HERE						
12	132/130 M AT 775 kPa						
11	RIM 6.75						
10	235/75R17.5						
9	Ⓜ 0034632						
8						***** (PRODUCTION DATE)	
7	DOT						
6	RADIAL TUBELESS						
5	WARNING.....						
4	PLEASE SEE THE TABLE 1 ON THE LEFT						
3	PLIES: SIDEWALL 1 STEEL MAX LOAD: SINGLE 2000 kg MAX LOAD: DUAL 1900 kg	TREAD 1 STEEL+4 STEEL					
2	REGROOVABLE						
1	PLEASE SEE THE TABLE 1 ON THE LEFT						
	UPPER MOLD					LOWER MOLD	
	235/75R17.5	132/130	M	TL	797	233	171.5
	TYRE SIZE	LOAD INDEX	SPEED SYMBOL	TYPE	A (mm)	B (mm)	C (mm)

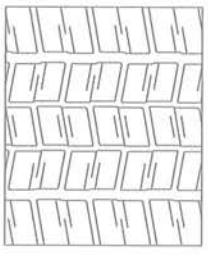
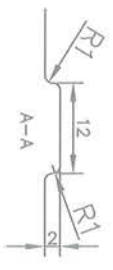
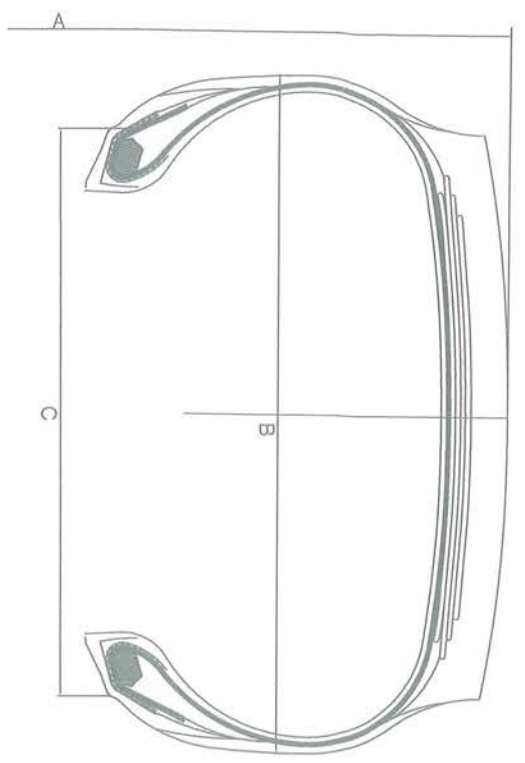
Approve by:

Check by:

Draft by:

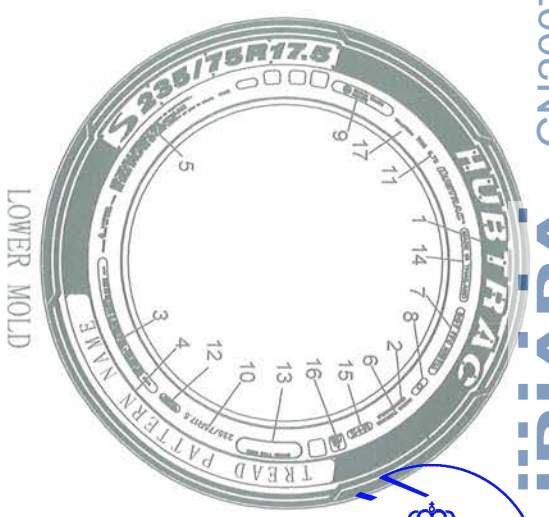




2307002NC VVAVIDI



TREAD PATTERNS

TABLE 1	
BRAND NAME	TREAD PATTERN NAME
HUBTRAC	REGIONAL D12



17	TRACTION	
16	 M+S	
15	MADE IN THAILAND	
14	BRAND TYRE HERE	
13	132/130 M AT 775 kPa	
12	RIM 6.75	
11	235/75R17.5	
10	 0034632	
9		**** (PRODUCTION DATE)
8	DOT	
7	RADIAL TUBELESS	
6	WARNING.....	
5	PLEASE SEE THE TABLE 1 ON THE LEFT	
4	PLIES: SIDEWALL 1 STEEL TREAD 1 STEEL+4 STEEL	
3	MAX LOAD: SINGLE 2000 kg (4410 lbs) AT 775 kPa (112 psi) COLD L.R. G	
2	MAX LOAD: DUAL 1900 kg (4190 lbs) AT 775 kPa (112 psi) COLD	
1	REGROOVABLE	
	UPPER MOLD	LOWER MOLD

235/75R17.5	132/130	M	TL	797	233	171.5
TYRE SIZE	LOAD INDEX	SPEED SYMBOL	TYPE	A (mm)	B (mm)	C (mm)

Approve by: 

Check by: 张艳

Draft by: 杨梅

REPORT No. CN20070372**APPROVAL OF PNEUMATIC TYRES FOR COMMERCIAL VEHICLES
AND THEIR TRAILERS REFERRING TO UN REGULATION NO. 54R00/23**

Approval number : E4*54R00/23*34632*05

Applicant : LLIT (THAILAND) CO., LTD.

Manufacturer : LLIT (THAILAND) CO., LTD.
911/9 Moo 5, Khaokhansong, Sriracha, Chonburi 20110,
Thailand

Brand-name(s)/trademark(s) : LINGLONG; SHANLING; LEAO; Infinity; Benchmark;
ATLAS TIRE; BARKLEY; GREEN MAX; CROSSWIND;
BENCHMARK; ZEETEX; HUBTRAC

Trade description(s)/Commercial name(s) : D905; LFL866; SFL866; AFL866; IFL866; BFL866; LAU605;
SAU605; AAU605; IAU605; BAU605; BL220; LDL831;
SDL831; ADL831; IDL831; BDL831; KLT200; CWT20E;
GRT818; KLS200; CWS20E; KLD200; CWD20E; GRT808;
GRD816; AP-100[®]; DRV-OS[®]; DRV-OS[®]; LLA78; BL212;
BL808; ZOR1 EXTRA; REGIONAL S15; REGIONAL D12

Tyre size designation : 235/75R17.5

Place and date of test report issue : L'Albornar, Santa Oliva (Tarragona)
13/07/2020

Tested pneumatic tyre **FULFILS** with the specifications regarding to the type approval of approval of pneumatic tyre referring to the Supplement 23 to the original version of the UN Regulation NO. 54 as specified in the annex of this report.

Performed by:

Zhaocai (Frank) Yu
TEST ENGINEER

Revised by:

Lluís Sans Gomis
DEPARTMENT MANAGER

ANNEX TO THE REPORT

Reason(s) for extension:

- Addition of brand name: HUBTRAC
- Addition of trade description: REGIONAL S15; REGIONAL D12
- The test result of construction variant 1: PLIES: SIDEWALL 1 STEEL TREAD 1STEEL+3STEEL is referred to the test report CT054-A0-160013 issued on the date of March 06, 2016 by TUV NORD Mobilitat GmbH & Co.KG is valid and unnecessary to perform re-testing
- Addition of another new tyre construction variant 2: PLIES: SIDEWALL 1 STEEL TREAD 1STEEL+4STEEL, refer to the below test result:

1. TECHNICAL DESCRIPTION OF THE PNEUMATIC TYRE:

Brand-name(s)/trademark(s)	:	LINGLONG		
Trade description(s)/Commercial name(s)	:	KLS200		
Tyre-size designation	:	235/75R17.5		
Category of use	:	normal / snow /- special		
Structure	:	diagonal /- bias-belted / radial		
Speed category index	:	nominal	:	M
		additional	:	---
Load-capacity index	:	nominal:	single	: 132
			twinned	: 130
		additional:	single	: ---
			twinned	: ---
X of the manufacturer /	:	0.75		
Tyre cross-section	:	See technical documentation		

CN20070372

IDIADA



* THE PRESENTED RESULTS REFER ONLY TO THE TESTED SAMPLE
 * THE PARTIAL REPRODUCTION OF THIS REPORT WITHOUT THE PERMISSION OF IDIADA IS COMPLETELY FORBIDDEN

2. TYRE MARKING

2.1. Compulsory Marking

Approval mark

Approval mark Height a > 12 mm : Yes

Tyre definition marking height

Tyre size b > 6 mm : Yes

Load and speed index b > 6 mm : Yes

2.2. Additional Marking

“M+S” / “M.S” / “M&S” : M+S

“TUBELESS” : Yes

Index of inflation pressure : 775 kPa

Ply rating : 14

“ET” / “ML” / “MPT” / “POR” : N.A.

“REGROOVABLE” : Yes

Date of manufacture : 1120

Height of these marking c > 4 mm : Yes

3. TEST RESULTS.

Sample Reception date : 05/06/2020

Place and test dates : 06/06/2020-09/06/2020
Zhaoyuan, China

Sample Id. : CN20070372

Measure rim code : 6.75 × 17.5”

Test rim Code : 6.75 × 17.5”

3.1. Pneumatic tyre measurement

Mounting pressure in **measuring rim** : **P(1m) = 7.75 bar**

Conditioning temperature : **Temp. = 27 °C**

Adjusted pressure before conditioning : **P(2m) = 7.75 bar**

Readjusted pressure after **24 hours** : **P(3m) = 7.75 bar**

* THE PRESENTED RESULTS REFER ONLY TO THE TESTED SAMPLE

* THE PARTIAL REPRODUCTION OF THIS REPORT WITHOUT THE PERMISSION OF IDIADA IS COMPLETELY FORBIDDEN



3.1.1. Tyre width measurement:

Measures of **overall width** at six equally-spaced points:

Point	Overall width (mm)
1	234.7
2	234.7
3	234.4
4	234.2
5	234.7
6	234.4
Point	Maximum width (mm)
1,2,5	234.7

3.1.2. Tyre section width calculation:

S = 233 (mm) given by Annex 5/Calculation

Or

$$S = S_1 + K(A-A_1)$$

Nominal section width (mm)	235
K coefficient	0.4
Measuring rim Width (mm)	171.45
X of the manufacturer	0.75
Theoretical rim Width (mm)	176.3

Maximum measured width (mm)	Section width (mm)	Difference (%)
$S_M = 234.7$	$S = 233$	0.73

The overall width of a tyre may be less than the section or exceed the value by the following percentages: 8% structure diagonal; 4 % structure radial. For section with exceed 305mm shall not exceed the value by the following percentages: 4% structure diagonal; 2 % structure radial of nominal aspect higher than 60.

FULFILS / ~~DOES NOT FULFIL~~

IDIADA CN20070372

IDIADA



* THE PRESENTED RESULTS REFER ONLY TO THE TESTED SAMPLE

* THE PARTIAL REPRODUCTION OF THIS REPORT WITHOUT THE PERMISSION OF IDIADA IS COMPLETELY FORBIDDEN

3.1.3. Outer diameter measurement

Maximum circumference (mm)	Outer diameter (mm) $D_{i\ ext} = \frac{L}{\pi}$
2503	796.7

3.1.4. Tyre outer diameter calculation:

$$D = d + 2H$$

Conventional number of the nominal rim(mm)	d = 445 mm
Nominal section width (mm)	S1= 235 mm
Nominal aspect ratio	Ra= 75
Factor a	0.97
Factor b	Radial:1.04 (Normal), 1.06(Special) Diagonal:1.08 (Normal), 1.09(Special)
Nominal section height (mm)	H = 176 mm

Dmin $D_{min} = d + 2(H \times a)$	Outer diameter D (measured)	Dmax $D_{max} = d + 2(H \times b)$
787 mm	796.7 mm	819 mm
Dmin < D < Dmax		

FULFILS / DOES NOT FULFIL

CN20070372




3.2 Load/speed performance test

3.2.1 For tyres with speed category symbol Q and above:

Test Conditions

Speed category	N.A.
Load capacity index	N.A.
Maximum velocity (km/h)	N.A.
Test axle load (kg)	N.A.
Maximum speed during the test (km/h)	N.A.
Load of axle during the test (kg)	N.A.
Inflation tyre pressure before conditioning(kpa)	N.A.
Conditioning time wheel-tyre assembly(hour)	N.A.
Readjusted tyre pressure after conditioning (kpa)	N.A.
Test wheel diameter (m)	N.A.
Temperature (°C)	N.A.

Test cycle

Step	Duration (min)	Speed (km/h)
1	N.A.	N.A.
2	N.A.	N.A.
3	N.A.	N.A.
4	N.A.	N.A.
TOTAL	N.A.	

CN20070372

IDIADA



* THE PRESENTED RESULTS REFER ONLY TO THE TESTED SAMPLE
 * THE PARTIAL REPRODUCTION OF THIS REPORT WITHOUT THE PERMISSION OF IDIADA IS COMPLETELY FORBIDDEN

3.2.2 Tyres with speed category symbol P and below:

Test Conditions

Speed category	M
Load capacity index	132
Maximum velocity (km/h)	130
Test drum speed during the test (km/h)	72
Load of axle during the test (kg) (100%)	2000
Inflation tyre pressure before conditioning(kpa)	775
Conditioning time wheel-tyre assembly(hour)	3
Readjusted tyre pressure after conditioning (kpa)	775
Test wheel diameter (m)	1.7
Temperature (°C)	27

Test cycle

Step	Duration (h)	Load (kg)	
1	7	66%	1320
2	16	84%	1680
3	24	101%	2020
TOTAL	47		

3.2.3 Tyre measurement

Outer diameter measurement at the start of test	796.7 mm
Outer diameter measurement at the end of test	799.0 mm
Percentage of the change in outer diameter measurement (%)	0.28

* THE PRESENTED RESULTS REFER ONLY TO THE TESTED SAMPLE

* THE PARTIAL REPRODUCTION OF THIS REPORT WITHOUT THE PERMISSION OF IDIADA IS COMPLETELY FORBIDDEN



3.3. Test results

3.3.1. The outer diameter of the tyre, measured six hours after the load/speed endurance test, must not differ by more than $\pm 3.5\%$ from the outer diameter as measured before the test.

FULFILS / ~~DOES NOT FULFIL~~

3.3.2. Once passed the load/speed endurance test, the tyre must not exhibit any tread separation, ply separation, cord separation, chunking or broken cords.

FULFILS / ~~DOES NOT FULFIL~~

Test Place : Zhaoyuan, China
Test Date : 06/06/2020-09/06/2020



Zhaocai(frak) Yu
TEST ENGINEER



CN20070372

IDIADA

* THE PRESENTED RESULTS REFER ONLY TO THE TESTED SAMPLE
* THE PARTIAL REPRODUCTION OF THIS REPORT WITHOUT THE PERMISSION OF IDIADA IS COMPLETELY FORBIDDEN