

THE NETHERLANDS
(N E D E R L A N D)**COMMUNICATION**Concerning ⁽¹⁾:

- ~~approval granted~~
- approval extended
- ~~approval refused~~
- ~~approval withdrawn~~
- ~~production definitely discontinued~~

of a type of tyre for motor vehicles pursuant to Regulation number 54.

Approval number: E4*54R00/23*41099*07

1. Manufacturer's name and address : LLIT (THAILAND) CO., LTD.
911/9 Moo 5, Khaokhansong, Sriracha, Chonburi
20110, Thailand
2. Tyre type designation ⁽²⁾ :
 - 2.1. Brand name(s)/trademark(s) : LINGLONG; SHANLING; LEAO; Infinity;
Benchmark; ATLAS TIRE; ZEETEX;
BARKLEY; GREEN MAX; CROSSWIND;
BENCHMARK; TECHKING; FINIXX; SUMO
FIRENZA; FULLMILE; HUBTRAC
 - 2.2. Trade description (s)/Commercial
name(s)/ : LLF02; SF02; LF02; BF02; LTL812; STL812;
ATL812; ITL812; BTL812; AP-100; LAU603;
SAU603; AAU603; IAU603; BAU603; AP-200;
HT-12 EXTRA; ETS100; BL221; CWS10E;
ETD100; BL831; GRD802; CWD10E; KTD300;
BL833; GRD806; CWD30K; KWD600;
BLW18; GWD838; CWD60W; LLA08; SA08;
LA08; BA08; AT-08CC; TASK DH; D960;
SD960; LD960; BD960; BL809; FMT153D;
DRV-960; LDW807; SDW807; ADW807;
IDW807; BDW807; BLW08; DRIVUS-S;
DRIVUS-D; DRIVUS-WD; T-HYBRID D01; T-
HYBRID S01; AP-100^o; DRV-OS^o; BL601;
HIGHWAY D11; HIGHWAY S11; REGIONAL
D11; MIXED G11

3. If applicable, name and address of the manufacturer's representative : Not applicable
4. Summarized description:
- 4.1. Size of tyre : 315/80R22.5
- 4.2. Category of use : ~~normal~~/snow/special⁽¹⁾
- 4.3. Structure : ~~diagonal (bias-ply)~~/radial⁽¹⁾
- 4.4. Tyre class : ~~E2~~/C3⁽¹⁾
- 4.5. Speed category symbol:
- 4.5.1. nominal : M
- 4.5.2. additional (if applicable) : ---
- 4.6. Load-capacity indices:
- 4.6.1. Corresponding to nominal speed:
– single : 154
– twinned (dual) : 150
- 4.6.2. Corresponding to additional speed:
– single : ---
– twinned (dual) : ---
5. Technical service and, where applicable, test laboratory approved for purposes of approval or of verification of conformity : IDIADA Automotive Technology, S.A.
L'Albornar, P.O. Box 20
43710 Santa Oliva (Tarragona)
Spain
6. Date of report issued by that service : August 26, 2020
7. Number of report issued by that service : CN20080767
8. Reason(s) for extension (if applicable) : Addition of brand name and trade description;
The technical service is changed into IDIADA
9. Any remarks : ---

Approval number: E4*54R00/23*41099*07

10. Place : Zoetermeer
11. Date : 08 September 2020
12. Signature :



13. Annexed to this communication is a list of documents in the approval file deposited at the administrative service having delivered the approval and which can be obtained upon request.
- Application form relating to ECE approval for a pneumatic tyre pursuant to Regulation number 54.
 - The drawing of the tyre's sidewalls, tread and dimensioned cross-section.
 - The test report as mentioned in item 7.

⁽¹⁾ Strike out what does not apply.

⁽²⁾ A list of brand name(s)/trademark(s) or Trade description(s)/ Commercial name(s) may be annexed to this communication.

IDIADA

TECHNICAL DOCUMENTATION



CN20080767

IDIADA

APPLICATION FOR APPROVAL OF A TYPE OF PNEUMATIC TYRE ACCORDING TO ECE REGULATION No. 54, 00 SERIES OF AMENDMENTS

Reason of extension: add new trade mark; add new type designation; modify the mold

- | | |
|---|--|
| 1. Manufacturer's name and address | : LLIT(THAILAND)CO.,LTD.
911/9 Moo 5, Khaokhansong
Sriracha, Chonburi 20110
Thailand |
| 2. Tyre type designation | : LINGLONG; SHANLING; LEAO; Infinity; Benchmark; ATLAS TIRE;
ZEETEX; BARKLEY; GREEN MAX; CROSSWIND; BENCHMARK;
TECHKING; FINIXX; SUMO FIRENZA; FULLMILE; <u>HUBTRAC</u> |
| 2.1 Brand-name(s)/trademark(s) | : LLF02; SF02; LF02; BF02; LTL812; STL812; ATL812; ITL812;
BTL812; AP-100; LAU603; SAU603; AAU603; IAU603; BAU603;
AP-200; HT-12 EXTRA; ETS100; BL221; CWS10E; ETD100; BL831;
GRD802; CWD10E; KTD300; BL833; GRD806; CWD30K; KWD600;
BLW18; GWD838; CWD60W; LLA08; SA08; LA08; BA08; AT-08CC;
TASK DH; D960; SD960; LD960; BD960; BL809; FMT153D; DRV-960;
LDW807; SDW807; ADW807; IDW807; BDW807; BLW08; DRIVUS-S;
DRIVUS-D; DRIVUS-WD; T-HYBRID D01; T-HYBRID S01; AP-100 ^(V) ;
DRV-OS ^(M) ; BL601; <u>HIGHWAY D11; HIGHWAY S11; REGIONAL D11;</u>
<u>MIXED G11</u> |
| 2.2 Trade description(s)/Commercial name(s) | : LLF02; SF02; LF02; BF02; LTL812; STL812; ATL812; ITL812;
BTL812; AP-100; LAU603; SAU603; AAU603; IAU603; BAU603;
AP-200; HT-12 EXTRA; ETS100; BL221; CWS10E; ETD100; BL831;
GRD802; CWD10E; KTD300; BL833; GRD806; CWD30K; KWD600;
BLW18; GWD838; CWD60W; LLA08; SA08; LA08; BA08; AT-08CC;
TASK DH; D960; SD960; LD960; BD960; BL809; FMT153D; DRV-960;
LDW807; SDW807; ADW807; IDW807; BDW807; BLW08; DRIVUS-S;
DRIVUS-D; DRIVUS-WD; T-HYBRID D01; T-HYBRID S01; AP-100 ^(V) ;
DRV-OS ^(M) ; BL601; <u>HIGHWAY D11; HIGHWAY S11; REGIONAL D11;</u>
<u>MIXED G11</u> |
| 3. If applicable, name and address of manufacturer's representative | : not applicable |
| 4. Summarised description, | : not applicable |
| 4.1. Tyre size designation | : 315/80R22.5 |
| 4.2. Category of use | normal/special/snow |
| 4.3. Structure | diagonal (bias-ply)/radial |
| 4.4. Speed category symbol | : M |
| 4.4.1. Nominal | : M |
| 4.4.2. Additional (if applicable) | not applicable |
| 4.5. Load capacity indices | : single: 154, twinned(dual): 150 |
| 4.5.1. corresponding to nominal speed | : single: --- , twinned(dual): --- |
| 4.5.2. corresponding to additional speed | : single: --- , twinned(dual): --- |
| 5. Overall measured dimensions | Annex 5/calculated |
| overall section width | 313 |
| outer diameter | 1076 |
| 6. Factor 'x' | 0.75 |
| 7. Ply-rating number for diagonal (bias-ply) tyres | Not applicable |
| 8. Rims on which the tyre can be mounted | : 9.75 |
| 9. Measuring rim and test rim | 9.00 |
| 10. Tyre class | C2 / C3 |
| 11. State whether the tyre is | tubeless / tube-type |
| 12. Inflation pressure and index for measuring and testing | see attached test report |
| 13. Submitted for approval on (date) | Aug 21, 2020 |

We herewith declare that we have not applied and will not apply for approval with another Contracting Party of the ECE for the same type of product.

MANUFACTURER'S STAMP

Signature :

.....
.....

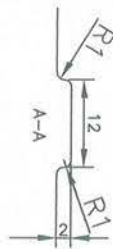
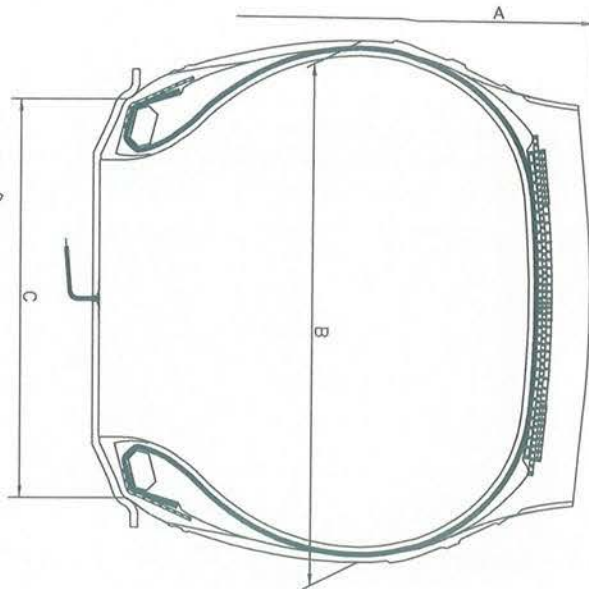
Name: Ma Xiaogang



THIS APPLICATION IS ACCOMPANIED BY:

- Application form, relating to ECE approval for pneumatic tyre pursuant Regulation No.54
- A drawing of the tyre's side wall, tread and dimensioned cross section.
- The test report.

iDiADA CN20080767



TREAD PATTERNS

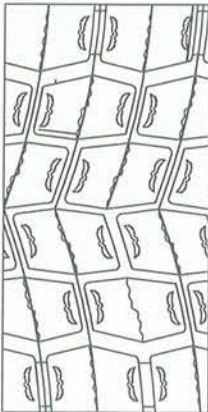
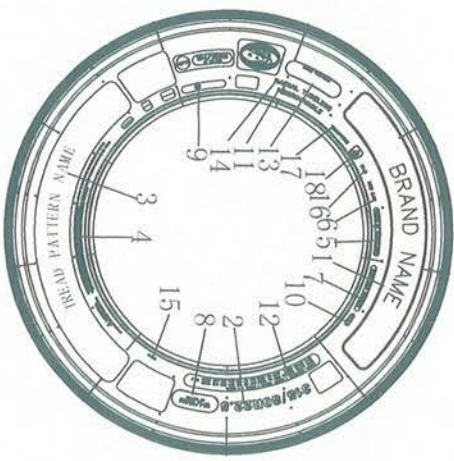
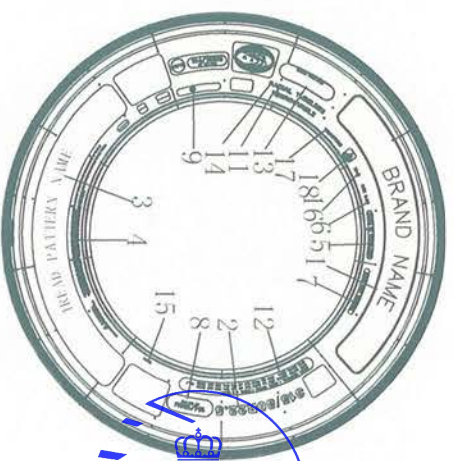


TABLE 1

BRAND NAME	TREAD PATTERN NAME
LINGLONG	KTD300
SHANLING	KTD300
LEAO	KTD300
Infinity	KTD300
BENCHMARK	KTD300
BARKLEY	BL833
CROSSWIND	CWD30K
TECHKING	TASK DH



LOWER MOLD



UPPER MOLD



18						
17	TRACTION					
16	M+S					
15	**** (MOLD NUMBER)					
14	RADIAL TUBELESS					
13	BRAND TYRE HERE					
12	PILES: SIDEWALL 1 STEEL, TREAD 1 STEEL + 3 STEEL, MAX LOAD: SINGLE 3750 kg (8265 lbs) AT 825 kPa (120 psi) COLD I.R.J MAX LOAD: DUAL 3350 kg (7385 lbs) AT 825 kPa (120 psi) COLD					
11	REGROOVABLE					
10	**** (PRODUCTION DATE)					
9	0041099					
8	154/150 M AT 825 kPa					
7	DOT...					
6	RIM 9.00					
5	MADE IN THAILAND					
4	WARNING...					
3	PLEASE SEE THE TABLE 1 ON THE LEFT					
2	315/80R22.5					
1	PLEASE SEE THE TABLE 1 ON THE LEFT					

TYRE SIZE	LOAD INDEX	SPEED SYMBOL	TYPE	A (mm)	B (mm)	C (mm)
315/80R22.5	154/150	M	TL	1076	312	228.5

Approve by:

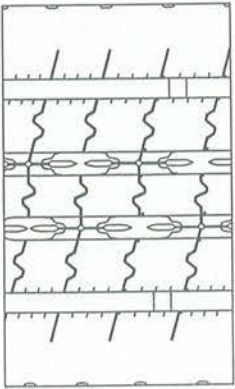
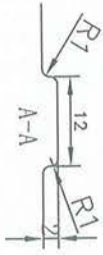
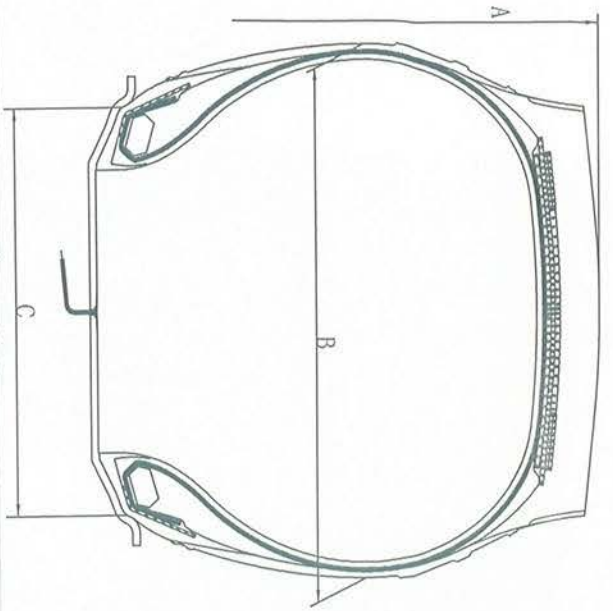
Signature

Check by:

Signature

Draft by:

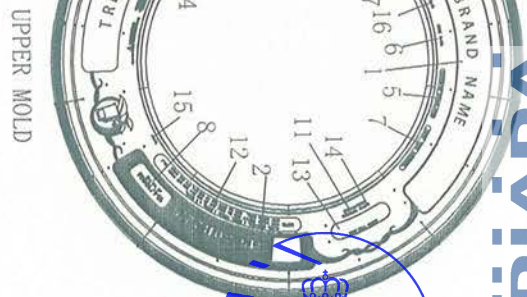
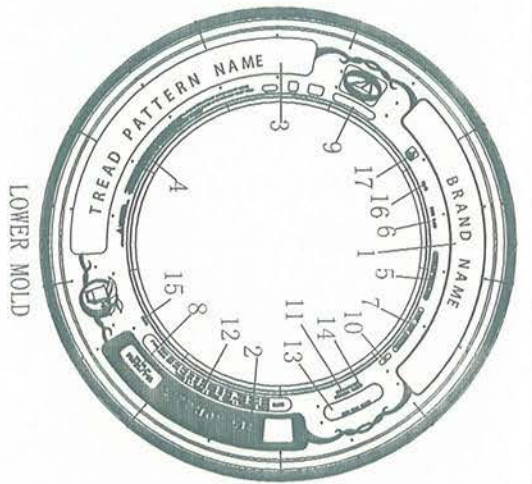
Signature



TREAD PATTERNS

TABLE 1

BRAND NAME	TREAD PATTERN NAME
LINGLONG	ETS100
SHANLING	ETS100
LEAO	ETS100
Infinity	ETS100
BENCHMARK	ETS100
BARKLEY	BL221
CROSSWIND	CWS10E
SUMO FIRENZA	DRIVUS-S



LOWER MOLD

UPPER MOLD

17						
16	M+S					
15	**** (MOLD NUMBER)					
14	RADIAL TUBELESS					
13	BRAND TYRE HERE					
12	18PR MAX LOAD: DUAL 3350 kg (7385 lbs) AT 825 kPa (120 psi) COLD L.R. J	PLIES: SIDEWALL 1 STEEL TREAD 1 STEEL + 3 STEEL MAX LOAD: SINGLE 3750 kg (8265 lbs) AT 825 kPa (120 psi) COLD L.R. J				
11	REGROOVABLE					
10	**** (PRODUCTION DATE)					
9	Ⓜ 0041099					
8	154/150 M AT 825 KPa					
7	DOT...					
6	RIM 9.00					
5	MADE IN THAILAND					
4	WARNING...					
3	PLEASE SEE THE TABLE 1 ON THE LEFT					
2	315/80R22.5					
1	PLEASE SEE THE TABLE 1 ON THE LEFT					
	LOWER MOLD				UPPER MOLD	
315/80R22.5	154/150	M	TL	1076	312	228.5
TYRE SIZE	LOAD INDEX	SPEED SYMBOL	TYPE	A (mm)	B (mm)	C (mm)

Approve by:

Handwritten signature

Check by:

Handwritten signature

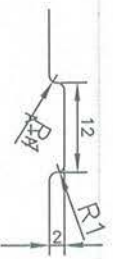
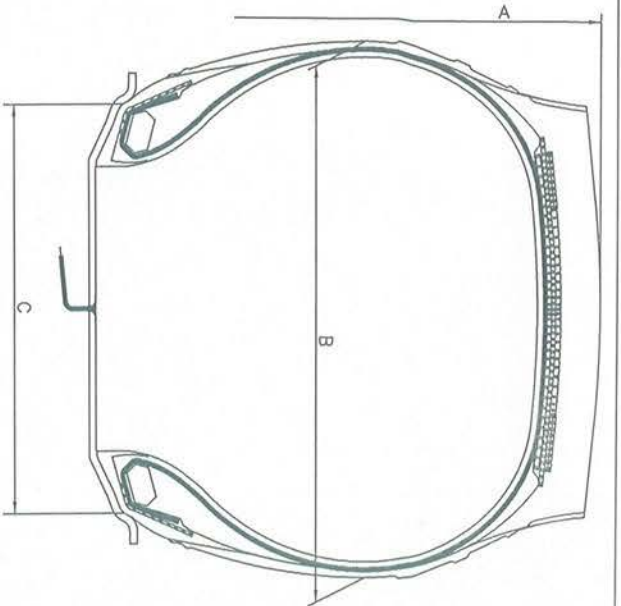
Draft by:

Handwritten signature

79108002NC

AVIIDI





TREAD PATTERNS

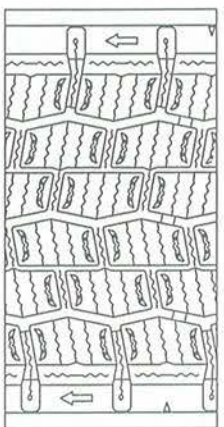
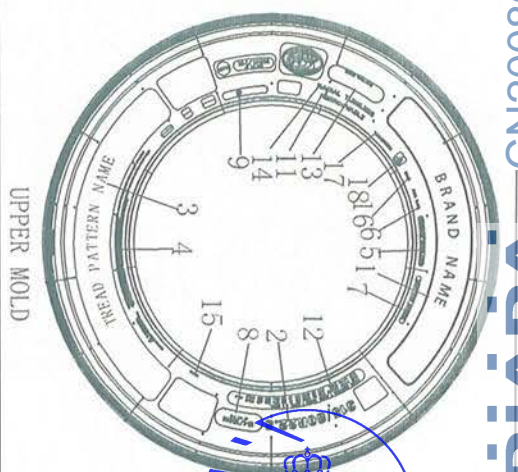
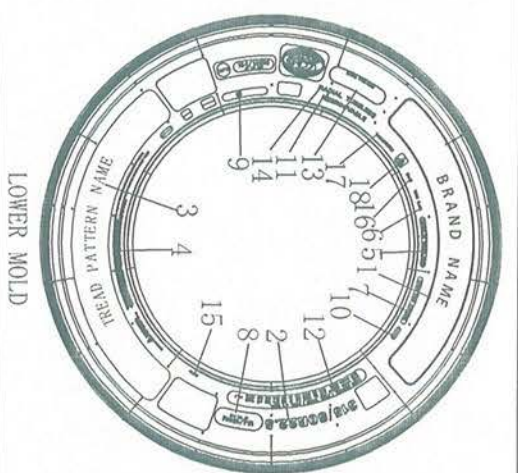


TABLE 1

BRAND NAME	TREAD PATTERN NAME
LINGLONG	KWD600
SHANLING	KWD600
LEAO	KWD600
Infinity	KWD600
BENCHMARK	KWD600
BARKLEY	BLW18
CROSSWINN	CWD60W
SUMO FIRENZA	DRIVUS-WD

Approve by:

[Signature]



18								
17	TRACTION							
16	M+S							
15	**** (MOLD NUMBER)							
14	RADIAL TUBELESS							
13	BRAND TYRE HERE							
12	PLIES: SIDEWALL 1 STEEL TREAD 1 STEEL + 3 STEEL MAX LOAD: SINGLE 3750 kg (8265 lbs) AT 825 kPa (120 psi) COLD L.R. J MAX LOAD: DUAL 3350 kg (7385 lbs) AT 825 kPa (120 psi) COLD							
11	REGRIOVABLE							
10	**** (PRODUCTION DATE)							
9	0041099							
8	154/150 M AT 825 kPa							
7	DOT...							
6	RIM 9.00							
5	MADE IN THAILAND							
4	WARNING...							
3	PLEASE SEE THE TABLE 1 ON THE LEFT							
2	315/80R22.5							
1	PLEASE SEE THE TABLE 1 ON THE LEFT							
	LOWER MOLD						UPPER MOLD	
315/80R22.5	154/150	M	TL	1076	312	228.5		
TYRE SIZE	LOAD INDEX	SPEED SYMBOL	TYPE	A (mm)	B (mm)	C (mm)		

Check by:

[Signature]

Draft by:

[Signature]

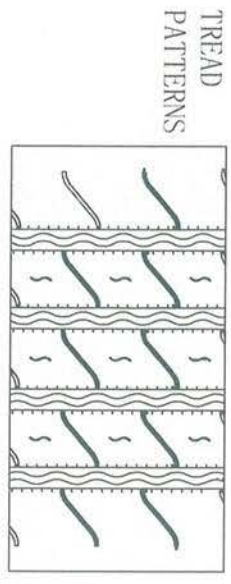
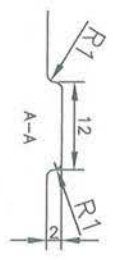
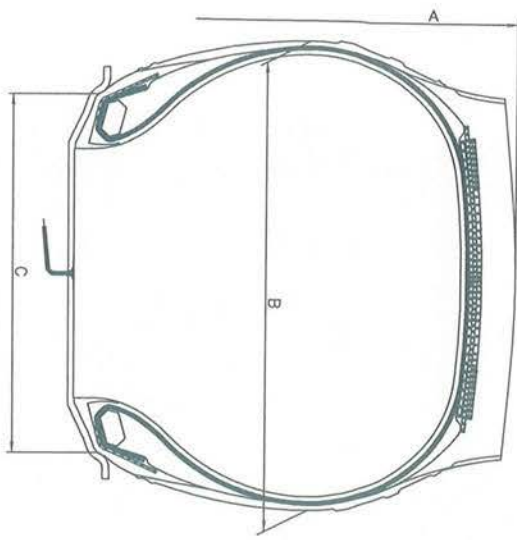
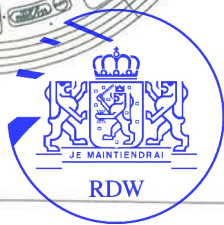
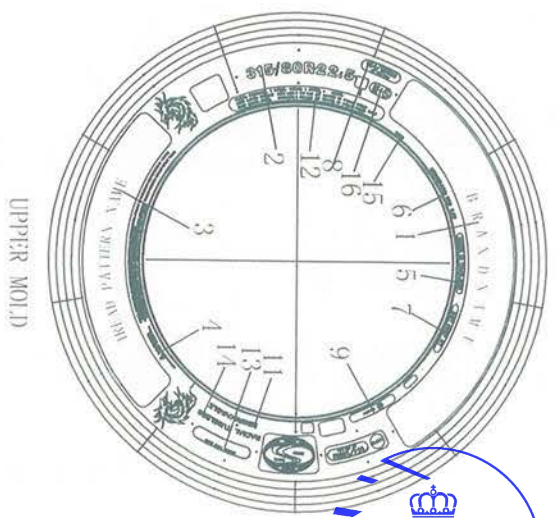
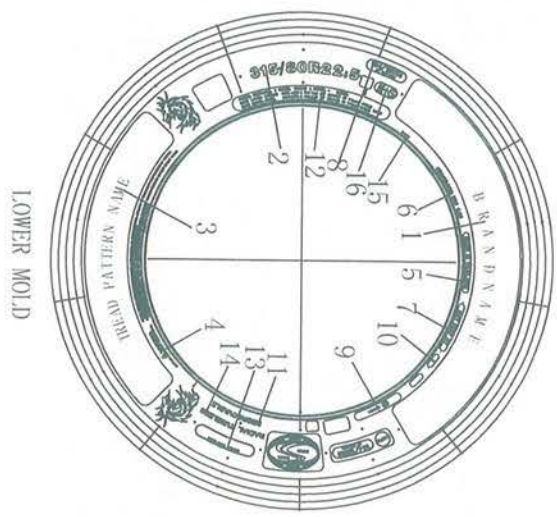


TABLE 1

BRAND NAME	TREAD PATTERN NAME
LINGLONG	LTL812; LAU603
SHANLING	STL812; SAU603
LEAO	ATL812; AAU603
Infinity	ITL812; IAU603
Benchmark	BTL812; BAU603
ATLAS TIRE	AP-100; AP-200

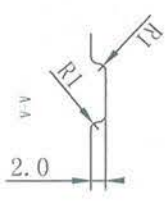
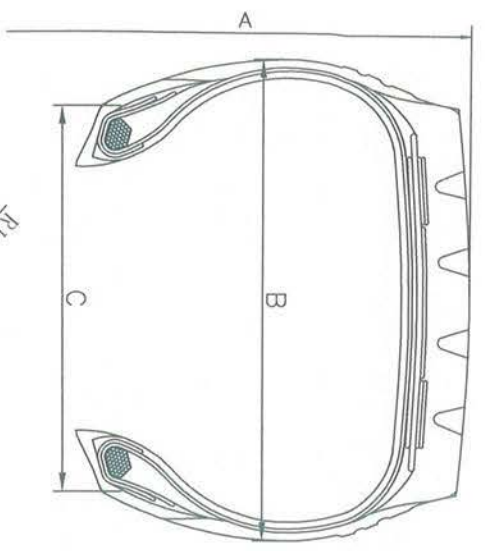


16	M+S					
15	**** (MOLD NUMBER)					
14	RADIAL TUBELESS					
13	BRAND TYRE HERE					
12	PIES: SIDEWALL 1 STEEL TREAD 1 STEEL + 3 STEEL MAX LOAD: SINGLE 8265 LBS (3750 kg) AT 120 PSI (825 kPa) COILD DUAL 7385 LBS (3350 kg) AT 120 PSI (825 kPa) COILD				L.R. J	
11	REGROOVABLE					
10	**** (PRODUCTION DATE)					
9	0041099					
8	154/150M AT 825 kPa					
7	DOT...					
6	STANDARD RIM 9.00					
5	MADE IN THAILAND					
4	WARNING...					
3	PLEASE SEE THE TABLE 1 ON THE LEFT					
2	315/80R22.5					
1	PLEASE SEE THE TABLE 1 ON THE LEFT					
	LOWER MOLD				UPPER MOLD	
315/80R22.5	154/150	M	TL	1076	312	228.5
TYRE SIZE	LOAD INDEX	SPEED SYMBOL	TYPE	A (mm)	B (mm)	C (mm)

Approve by: *Sumit*

Check by: *张艳*

Draft by: *马世琦*



TREAD PATTERNS

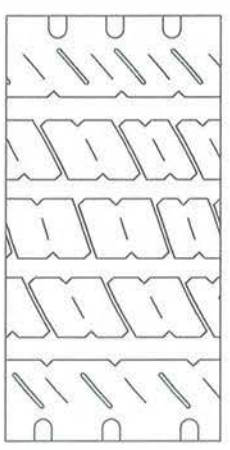
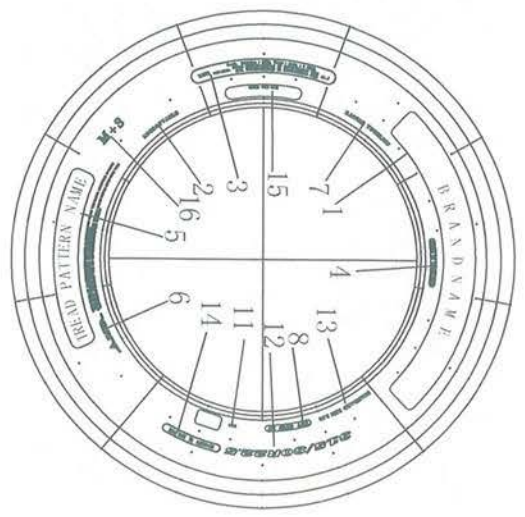
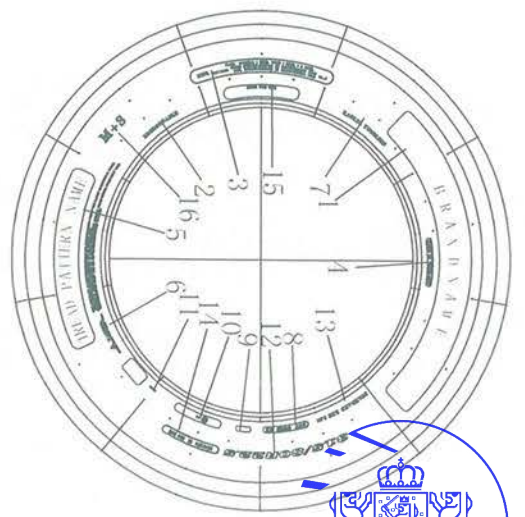


TABLE 1

BRAND NAME	TREAD PATTERN NAME
LINGLONG	LLF02
SHANLING	LLF02; SF02
LEAO	LLF02; LF02
Infinity	LLF02
Benchmark	LLF02; BF02
ATLAS TIRE	AP-100 [®]



UPPER MOLD



LOWER MOLD

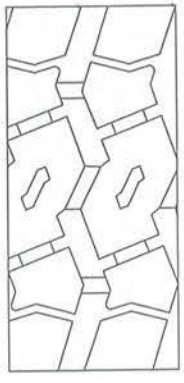
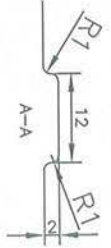
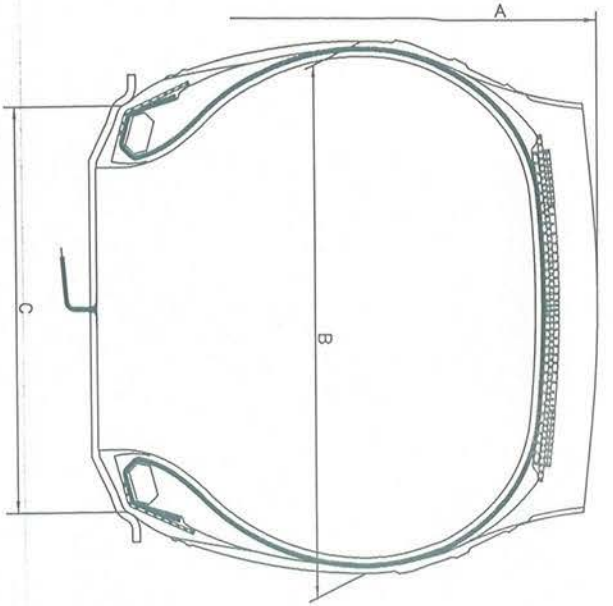
16	M+S	
15	BRAND TYRE HERE	
14	154/150 M 825 kPa	
13	STANDARD RIM 9.00	
12	315/80R22.5	
11	**** (MOLD NUMBER)	(E4) 0041099
10		**** (PRODUCTION DATE)
9		
8	DOT.....	
7	RADIAL, TUBELESS	
6	WARNING.....	
5	PLEASE SEE THE TABLE 1 ON THE LEFT	
4	MADE IN THAILAND	
3	TRBR: STEEL; STEEL T-STEEL TREAD T-STEEL + 3 STEEL MAX LOAD: SINGLE LBS (3750 kg) AT 120 PSI (825 kPa) GOLD I.R.J DUAL 785 LBS (350 kg) AT 120 PSI (825 kPa) GOLD	
2	REGROOVABLE	
1	PLEASE SEE THE TABLE 1 ON THE LEFT	
	UPPER MOLD	LOWER MOLD

315/80R22.5	154/150	M	TL	1076	312	228.5
TYRE SIZE	LOAD INDEX	SPEED SYMBOL	TYPE	A(mm)	B(mm)	C (mm)

Approve by: *Handwritten signature*

Check by: *Handwritten signature*

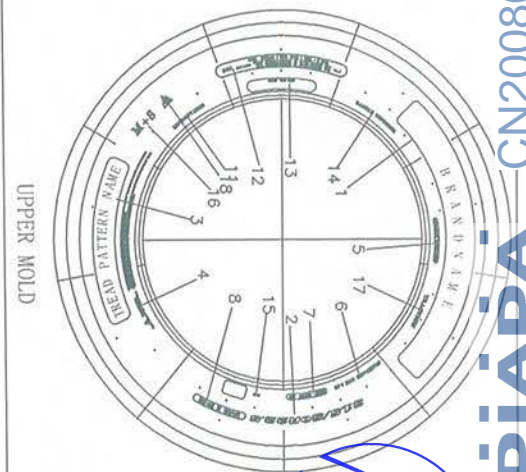
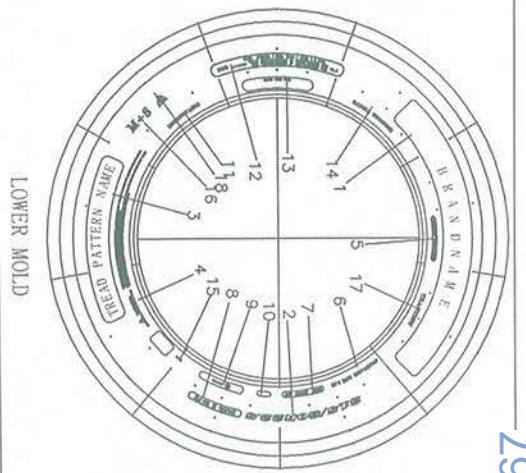
Draft by: *Handwritten signature*



TREAD PATTERNS

TABLE 1

BRAND NAME	TREAD PATTERN NAME
LINGLONG	D960
SHANLING	D960;SD960
LEAO	D960;LD960
Infinity	D960
Benchmark	D960;BD960
BARKLEY	BL809
ATLAS TIRE	DRV-OS [®] ; DRV-960
FINIXX	FMT153D



18		TRACTION
17		M+S
16		**** (MOLD NUMBER)
15		RADIAL TUBELESS
14		BRAND TYRE HERE
13		PIES: STEEL WALL 1 STEEL TREAD 1 STEEL + 3 STEEL
12		18PR MAX LOAD: SINGLE 825 LBS (3750 kg) AT 120 PSI (825 kPa) COLD L.R. 1
11		DUAL 7385 LBS (3350 kg) AT 120 PSI (825 kPa) COLD L.R. 1
11		REGROOVABLE
10		**** (PRODUCTION DATE)
9		(E4) 0041099
8		154/150 M 825 kPa
7		DOT...
6		STANDARD RIM 9.00
5		MADE IN THAILAND
4		WARNING...
3		PLEASE SEE THE TABLE 1 ON THE LEFT
2		315/80R22.5
1		PLEASE SEE THE TABLE 1 ON THE LEFT
		LOWER MOLD
		UPPER MOLD
		315/80R22.5
		154/150
		M
		TL
		1076
		312
		228.5
		TYRE SIZE
		LOAD INDEX
		SPEED SYMBOL
		TYPE
		A (mm)
		B (mm)
		C (mm)

Approve by:

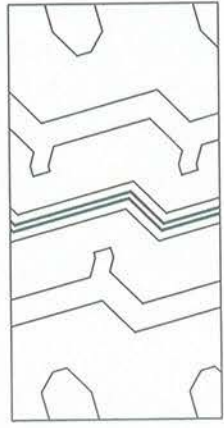
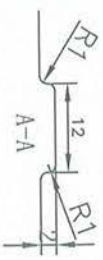
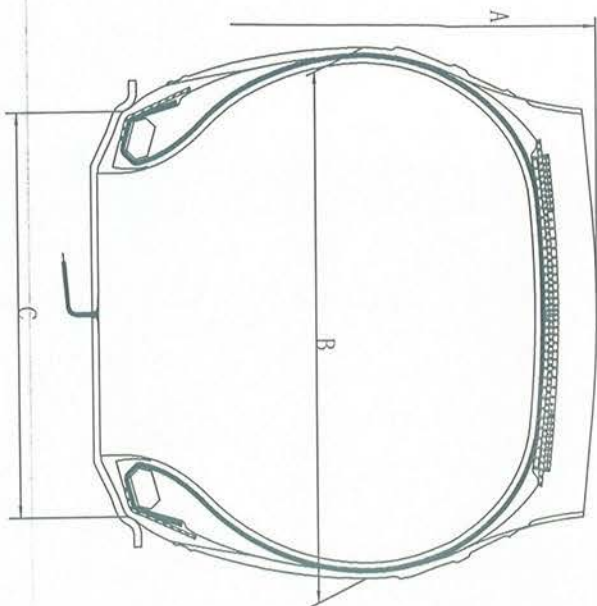
Handwritten signature

Check by:

Handwritten signature

Draft by:

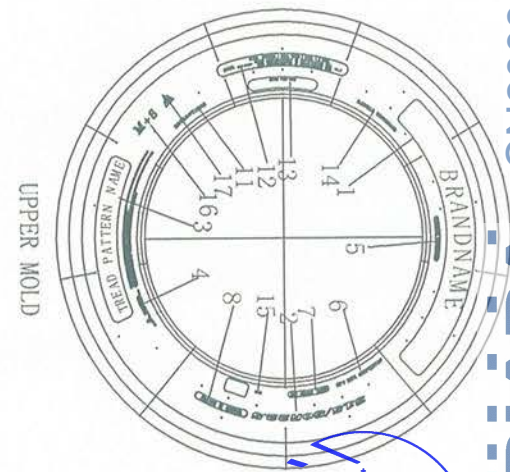
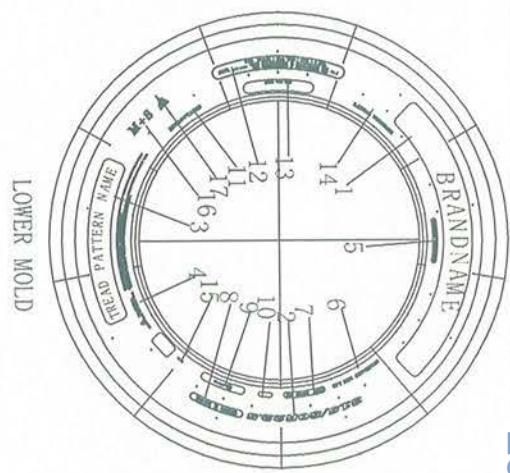
Handwritten signature



TREAD PATTERNS

TABLE 1

BRAND NAME	TREAD PATTERN NAME
LINGLONG	LLA08
SHANLING	LLA08;SA08
LEAO	LLA08;LA08
Infinity	LLA08
Benchmark	LLA08;BA08
ATLAS TIRE	AT-08CC
BARKLEY	BL601

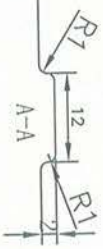
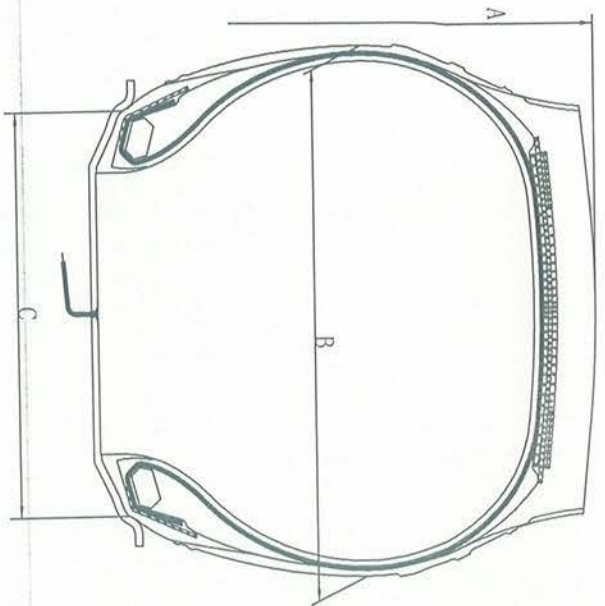


17							
16	M+S						
15	**** (MOLD NUMBER)						
14	RADIAL TUBELESS						
13	BRAND TYRE HERE						
12	PIES: SIDEWALL SINGLE DUAL	STEEL TREAD 1	STEEL + 3 STEEL	PSI (825 kPa)	COLD	L.R. J	
		8269 LBS (3750 kg)	AT 120	PSI (825 kPa)	COLD		
		7385 LBS (3350 kg)					
11	REGROOVABLE						
10	**** (PRODUCTION DATE)						
9	24 0041099						
8	154/150 M 825 kPa						
7	DOT...						
6	STANDARD RIM 9.00						
5	MADE IN THAILAND						
4	WARNING...						
3	PLEASE SEE THE TABLE 1 ON THE LEFT						
2	315/80R22.5						
1	PLEASE SEE THE TABLE 1 ON THE LEFT	LOWER MOLD		UPPER MOLD			
	315/80R22.5	154/150	M	TL	1076	312	228.5
	TYRE SIZE	LOAD INDEX	SPEED SYMBOL	TYPE	A (mm)	B (mm)	C (mm)

Approve by:

Check by:

Draft by:



TREAD PATTERNS

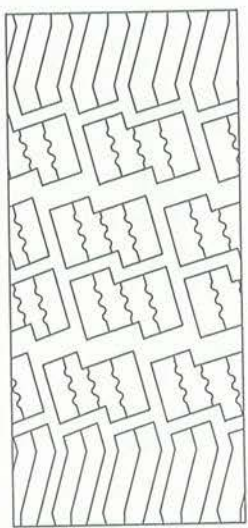
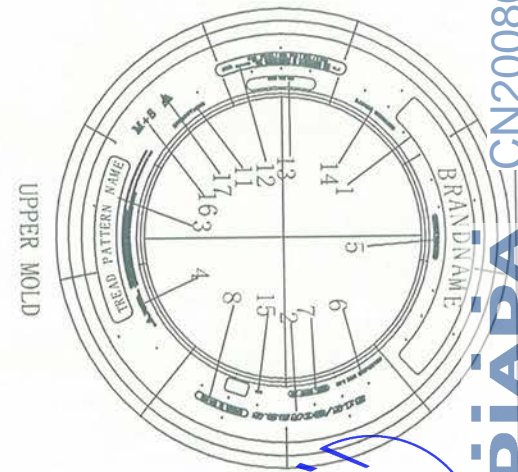
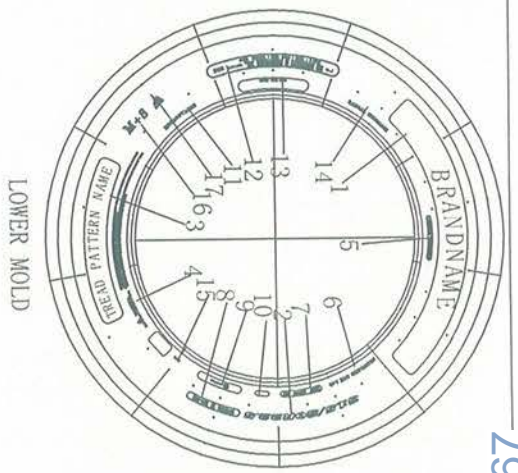


TABLE 1

BRAND NAME	TREAD PATTERN NAME
LINGLONG	LDW807
SHANLING	SDW807
LEAO	ADW807
Infinity	IDW807
Benchmark	BDW807
BARKLEY	BLW08



RDW

79108002NC VPI

17						
16	M+S					
15	**** (MOLD NUMBER)					
14	RADIAL TUBELESS					
13	BRAND TYRE HERE					
12	PLIES: SIDEWALL SINGLE DUAL	STEEL TREAD 1	STEEL + 3 STEEL	PSI (825 kPa)	COLD L.R. 1	
		8265 LBS (3730 kg)	AT 120	PSI (825 kPa)	COLD	
		7385 LBS (3350 kg)	AT 120	PSI (825 kPa)	COLD	
11	REGROOVABLE					
10	**** (PRODUCTION DATE)					
9	Ⓢ4) 0041099					
8	154/150 M 825 kPa					
7	DOT...					
6	STANDARD RIM 9.00					
5	MADE IN THAILAND					
4	WARNING...					
3	PLEASE SEE THE TABLE 1 ON THE LEFT					
2	315/80R22.5					
1	PLEASE SEE THE TABLE 1 ON THE LEFT	LOWER MOLD	UPPER MOLD			
	315/80R22.5	154/150	M	TL	1076	312
	TYRE SIZE	LOAD INDEX	SPEED SYMBOL	TYPE	A (mm)	B (mm)
						228.5
						C (mm)

Approve by:

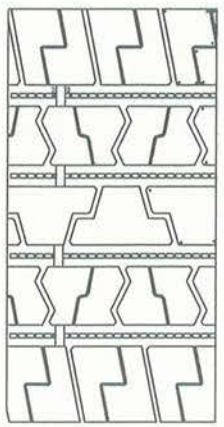
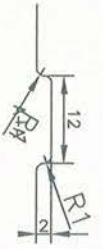
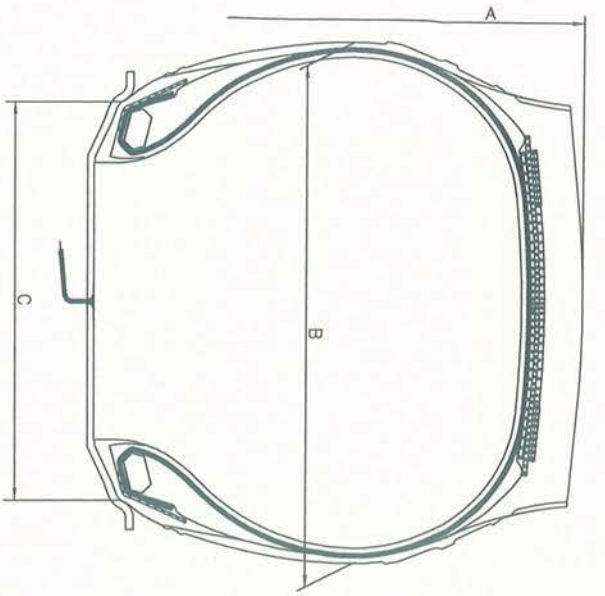
[Signature]

Check by:

[Signature]

Draft by:

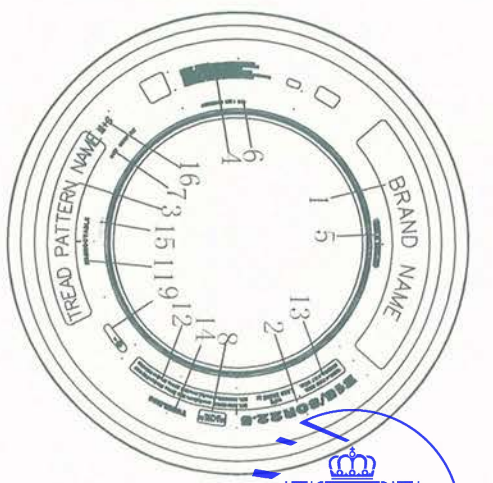
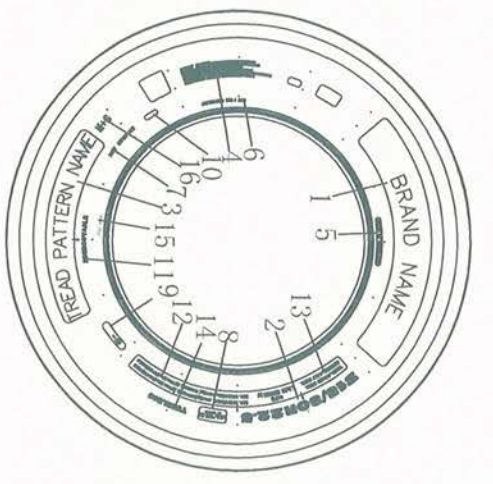
[Signature]



TREAD PATTERNS

TABLE 1

BRAND NAME	TREAD PATTERN NAME
ZETTEX	HT-12 EXTRA



16	M+S					
15	**** (MOLD NUMBER)					
14	TUBELESS					
13	TREAD 4 PLYS STEEL SIDEWALL 1 PLY STEEL					
12	MAX LOAD: SINGLE 3750 kg (8265 LBS) AT 825 kPa (120 PSI) COLD MAX LOAD: DUAL 3350 kg (7385 LBS) AT 825 kPa (120 PSI) COLD					
11	REGROOVABLE					
10	**** (PRODUCTION DATE)					
9	0041099					
8	154/150M AT 825 kPa					
7	DOT...					
6	STANDARD RIM 9.00					
5	MADE IN THAILAND					
4	WARNING...					
3	PLEASE SEE THE TABLE 1 ON THE LEFT					
2	315/80R22.5					
1	PLEASE SEE THE TABLE 1 ON THE LEFT	LOWER MOLD		UPPER MOLD		

315/80R22.5	154/150	M	TL	1076	312	228.5
TYRE SIZE	LOAD INDEX	SPEED SYMBOL	TYPE	A (mm)	B (mm)	C (mm)

Approve by:

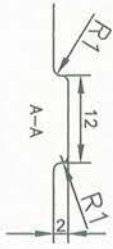
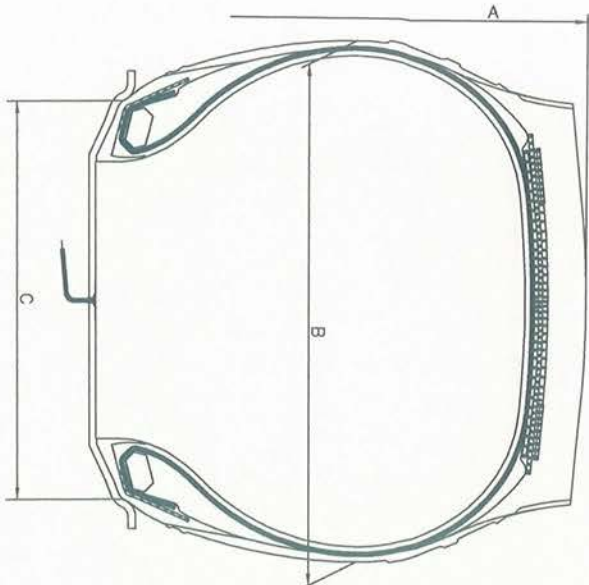
Handwritten signature

Check by:

Handwritten signature

Draft by:

Handwritten signature

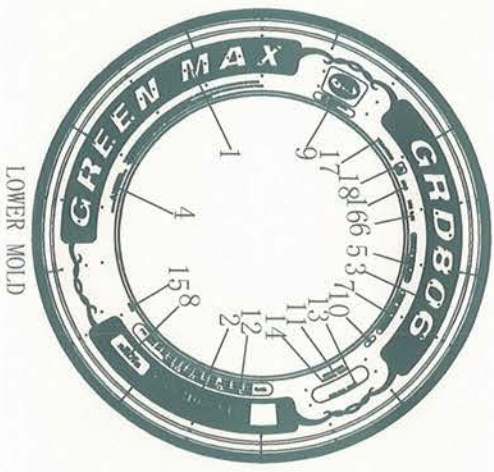


TREAD PATTERNS



TABLE 1

BRAND NAME	TREAD PATTERN NAME
GREEN MAX	GRD806



18		TRACTION
17		M+S
16		***** (MOLD NUMBER)
15		RADIAL TUBELESS
14		BRAND TYRE HERE
13		18PR PLYS: SIDEWALL 1 STEEL, TREAD 1 STEEL, + 3 STEEL, MAX LOAD: SINGLE 3750 kg (8265 lbs) AT 825 kPa (120 psi) COLD I.R. J MAX LOAD: DUAL 3350 kg (7385 lbs) AT 825 kPa (120 psi) COLD
12		REGROOVABLE
11		***** (PRODUCTION DATE)
10		0041099
9		154/150 M AT 825 kPa
8		DOT...
7		RIM 9.00
6		MADE IN THAILAND
5		WARNING...
4		PLEASE SEE THE TABLE 1 ON THE LEFT
3		PLEASE SEE THE TABLE 1 ON THE LEFT
2		315/80R22.5
1		PLEASE SEE THE TABLE 1 ON THE LEFT
	LOWER MOLD	UPPER MOLD

315/80R22.5	154/150	M	TL	1076	312	228.5
TYRE SIZE	LOAD INDEX	SPEED SYMBOL	TYPE	A (mm)	B (mm)	C (mm)

Approve by:

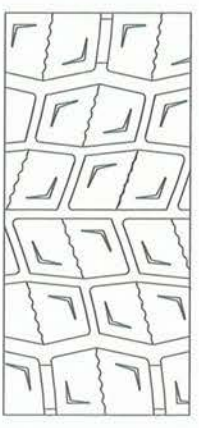
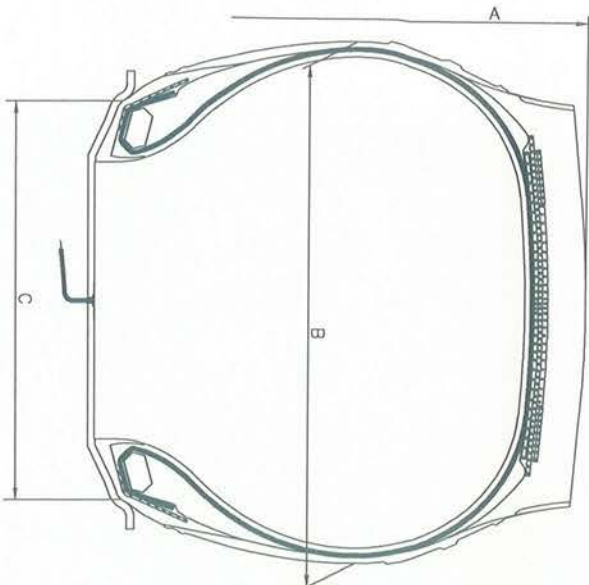
Bund

Check by:

张松

Draft by:

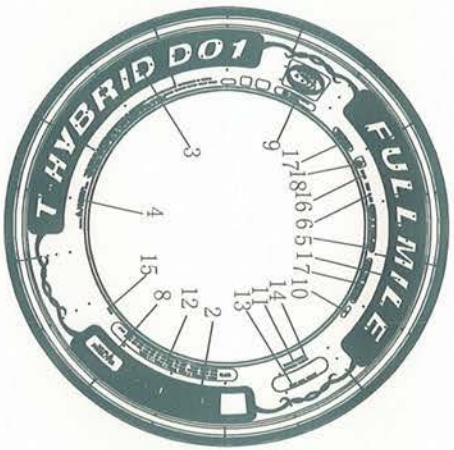
马世涛



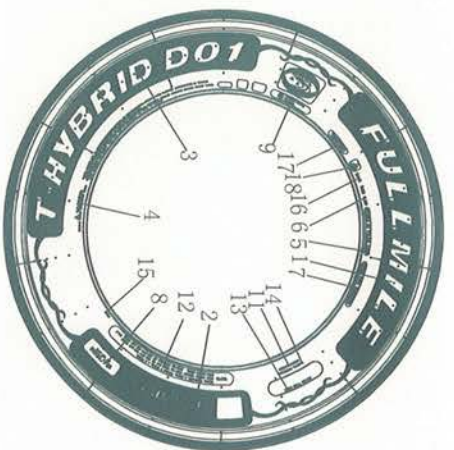
TREAD PATTERNS

TABLE 1	
BRAND NAME	TREAD PATTERN NAME
FULLMILE	T-HYBRID D01

LOWER MOLD



UPPER MOLD



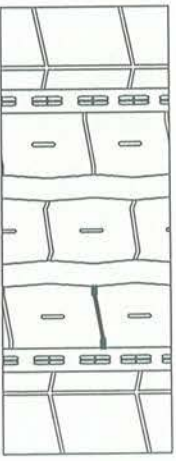
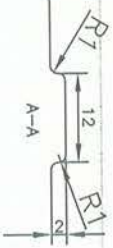
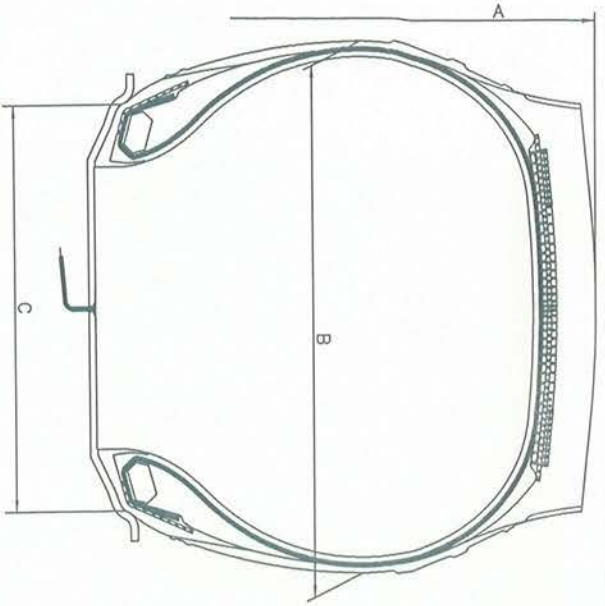
18		TRACTION
17		M+S
16		**** (MOLD NUMBER)
15		RADIAL TUBELESS
14		BRAND TYRE HERE
13		18PR PLYS: SIDEWALL 1 STEEL TREAD 1 STEEL + 3 STEEL
12		MAX LOAD: SINGLE 3750 kg (8265 lbs) AT 825 kPa (120 psi) COLD LR. J
11		MAX LOAD: DUAL 3350 kg (7385 lbs) AT 825 kPa (120 psi) COLD
10		REGROOVABLE
9		**** (PRODUCTION DATE)
8		E4 0041099
7		154/150 M AT 825 kPa
6		DOT...
5		RIM 9.00
4		MADE IN THAILAND
3		WARNING...
2		PLEASE SEE THE TABLE 1 ON THE LEFT
1		PLEASE SEE THE TABLE 1 ON THE LEFT
	LOWER MOLD	UPPER MOLD

315/80R22.5	154/150	M	TL	1076	312	228.5
TYRE SIZE	LOAD INDEX	SPEED SYMBOL	TYPE	A (mm)	B (mm)	C (mm)

Approve by:

Check by: 李利華

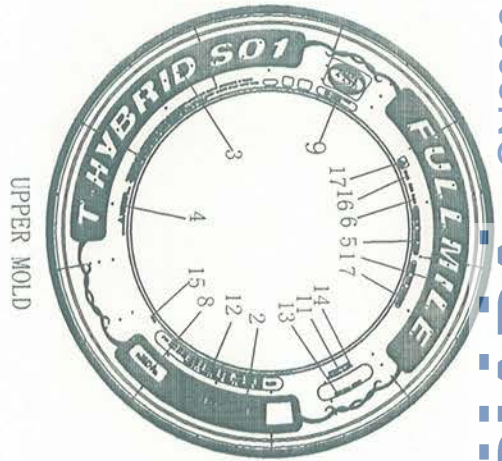
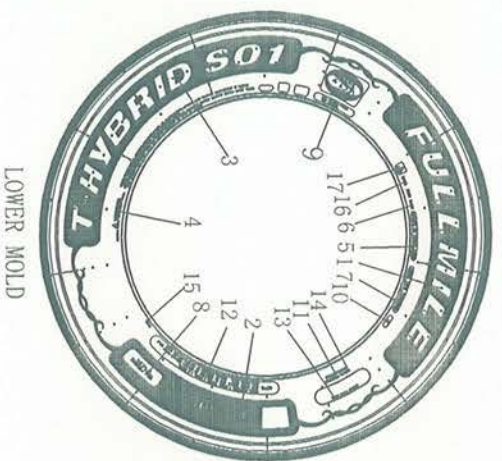
Draft by:



TREAD PATTERNS

TABLE 1

BRAND NAME	TREAD PATTERN NAME
FULLMILE	T-HYBRID S01



17		M+S					
16		**** (MOLD NUMBER)					
15		RADIAL TUBELESS					
14		BRAND TYRE HERE					
13		18PR PILES: SIDEWALL, 1 STEEL TREAD 1 STEEL + 3 STEEL					
12		MAX LOAD: SINGLE 3750 kg (8265 lbs) AT 825 kPa (120 psi) COLD LR. J					
11		MAX LOAD: DUAL 3350 kg (7385 lbs) AT 825 kPa (120 psi) COLD					
10		REGROOVABLE					
9		**** (PRODUCTION DATE)					
8		(E4) 0041099					
7		154/150 M AT 825 kPa					
6		DOT...					
5		RIM 9.00					
4		MADE IN THAILAND					
3		WARNING...					
2		PLEASE SEE THE TABLE 1 ON THE LEFT					
1		PLEASE SEE THE TABLE 1 ON THE LEFT					
		LOWER MOLD				UPPER MOLD	
		315/80R22.5	154/150	M	TL	1076	312
		TYRE SIZE	LOAD INDEX	SPEED SYMBOL	TYRE TYPE	A (mm)	B (mm)
							C (mm)

Approve by:

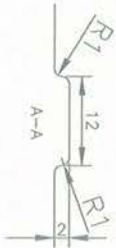
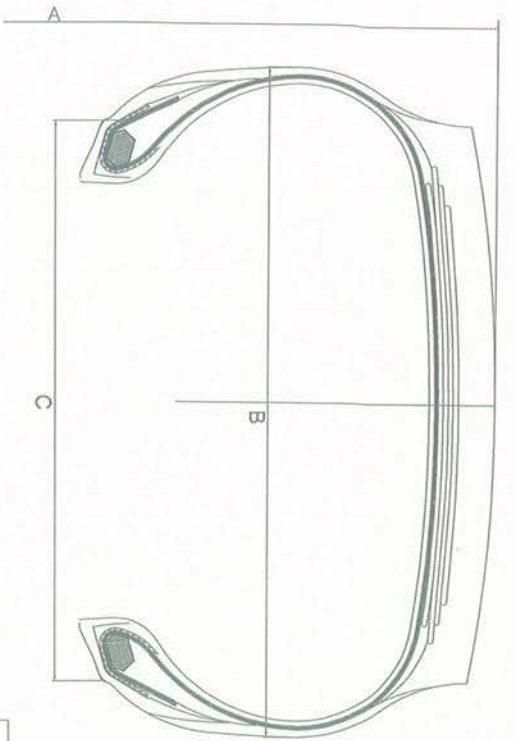
Handwritten signature

Check by:

Handwritten signature

Draft by:

Handwritten signature



TREAD PATTERNS

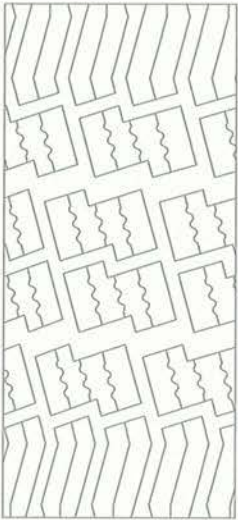
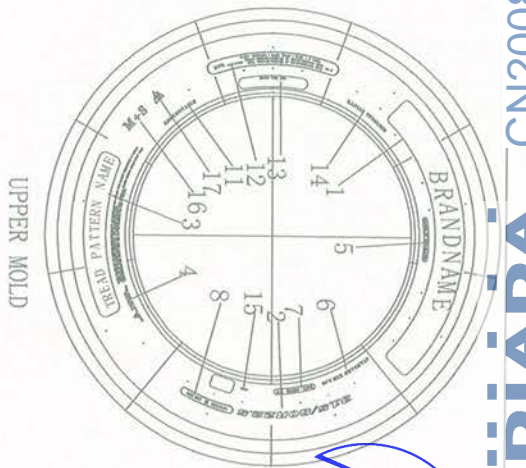
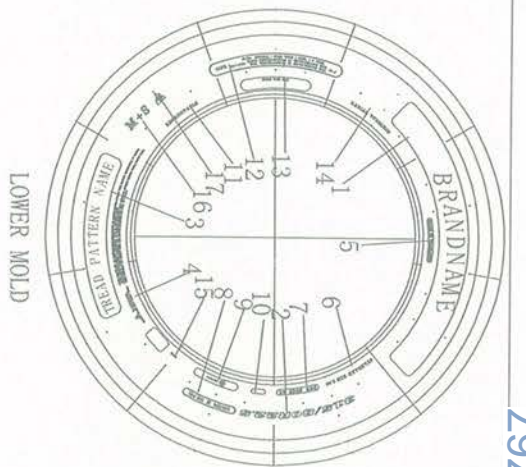


TABLE 1

BRAND NAME	TREAD PATTERN NAME
LINGLONG	LDW807
SHANLING	SDW807
LEAO	ADW807
Infinity	IDW807
Benchmark	BDW807
BARKLEY	BLW08

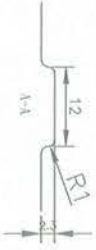
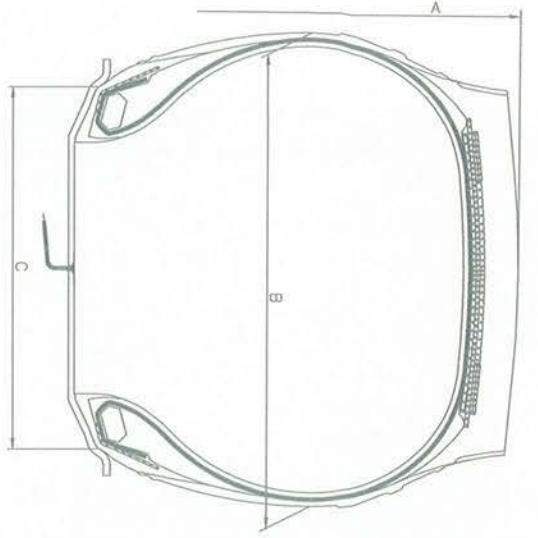


17							
16	M+S						
15	***** (MOLD NUMBER)						
14	RADIAL TUBELESS						
13	BRAND TYRE HERE						
12	PILES: SIDEWALL SINGLE TREAD 1 STEEP TREAD 1 STEEP + 4 STEEP 18PR MAX LOAD: 8265 LBS (3750 kg) AT 120 PSI (825 kPa) COLD DUAL 7385 LBS (3350 kg) AT 120 PSI (825 kPa) COLD L.R. J						
11	REGRMOVABLE						
10	***** (PRODUCTION DATE)						
9	0041099						
8	154/150 M 825 kPa						
7	DOT..						
6	STANDARD RIM 9.00						
5	MADE IN THAILAND						
4	WARNING...						
3	PLEASE SEE THE TABLE 1 ON THE LEFT						
2	315/80R22.5						
1	PLEASE SEE THE TABLE 1 ON THE LEFT	LOWER MOLD		UPPER MOLD			
	315/80R22.5	154/150	M	TL	1076	312	228.5
	TYRE SIZE	LOAD INDEX	SPEED SYMBOL	TYPE	A (mm)	B (mm)	C (mm)

Approve by:

Check by:

Draft by:



TREAD PATTERNS

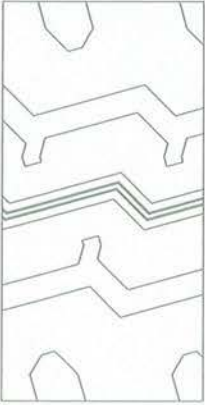


TABLE 1

BRAND NAME	TREAD PATTERN NAME
HUBTRAC	MIXED G11

17	ASA					
16	M+S					
15	(E4) 0041099					
14	BRAND TIRE HERE					
13	154/150 M AT 825 kPa					
12	RIM 9.00					
11	315/80R22.5					
10	**** (MOLD NUMBER)					
9						**** (PRODUCTION DATE)
8	DOT.....					
7	RADIAL TUBELESS					
6	WARNING.....					
5	PLEASE SEE THE TABLE 1 ON THE LEFT					
4	MADE IN THAILAND					
3	PIES: SIDEWALL 1 STEEL TREAD 1 STEEL+3 STEEL 18PR MAX LOAD: SINGLE 3750kg (8265lbs) AT 825kPa (120psi) COLD L.R. J MAX LOAD: DUAL 3350kg (7385lbs) AT 825kPa (120psi) COLD					
2	REGROOVABLE					
1	PLEASE SEE THE TABLE 1 ON THE LEFT					
	UPPER MOLD					LOWER MOLD



TYRE SIZE	LOAD INDEX	SPEED SYMBOL	TYPE	A (mm)	B (mm)	C (mm)
315/80R22.5	154/150	M	TL	1076	312	228.5

Approve by:

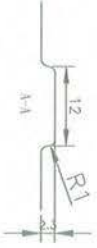
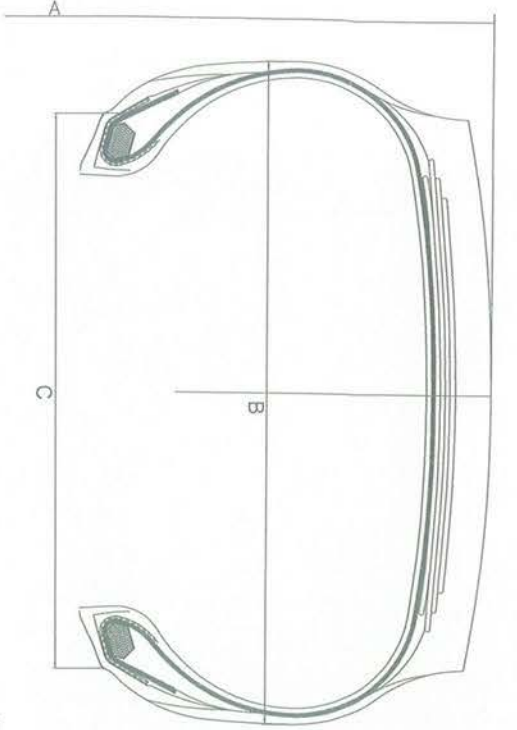
Signature

Check by:

Signature

Draft by:

Signature



TREAD PATTERNS

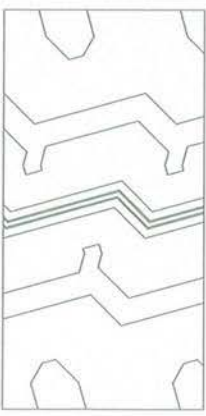
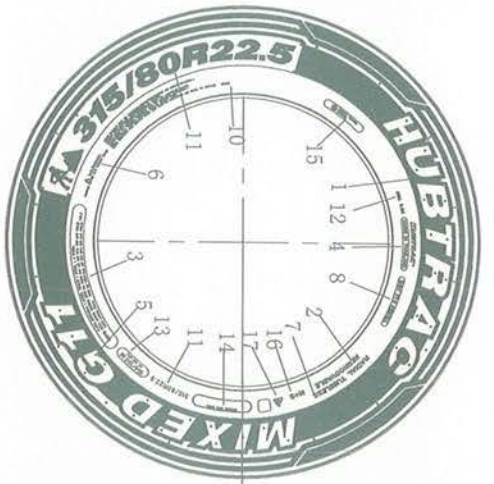


TABLE 1

BRAND NAME	TREAD PATTERN NAME
HUBTRAC	MIXED G11



17	▲							
16	M+S							
15	(E4) 0041099							
14	BRAND TIRE HERE							
13	154/150 M AT 825 kPa							
12	RIM 9.00							
11	315/80R22.5							
10	**** (MOLD NUMBER)							
9								**** (PRODUCTION DATE)
8	DOT.....							
7	RADIAL TUBELESS							
6	WARNING....							
5	PLEASE SEE THE TABLE 1 ON THE LEFT							
4	MADE IN THAILAND							
3	PLIES: SIDWALL 1 STEEL TREAD 1 STEEL+4 STEEL 18PR MAX LOAD: SINGLE 3750kg (8265lbs) AT 825kPa (120psi) COLD L.R.J MAX LOAD: DUAL 3350kg (7385lbs) AT 825kPa (120psi) COLD							
2	REGROOVABLE							
1	PLEASE SEE THE TABLE 1 ON THE LEFT	UPPER MOLD		LOWER MOLD				

315/80R22.5	154/150	M	TL	1076	312	228.5
TYRE SIZE	LOAD INDEX	SPEED SYMBOL	TYPE	A (mm)	B (mm)	C (mm)

Approve by:

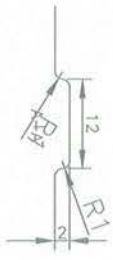
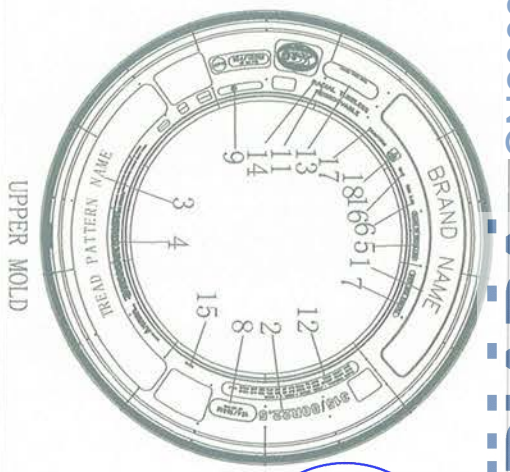
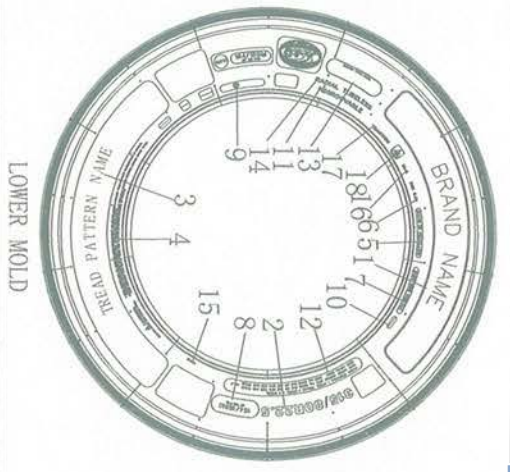
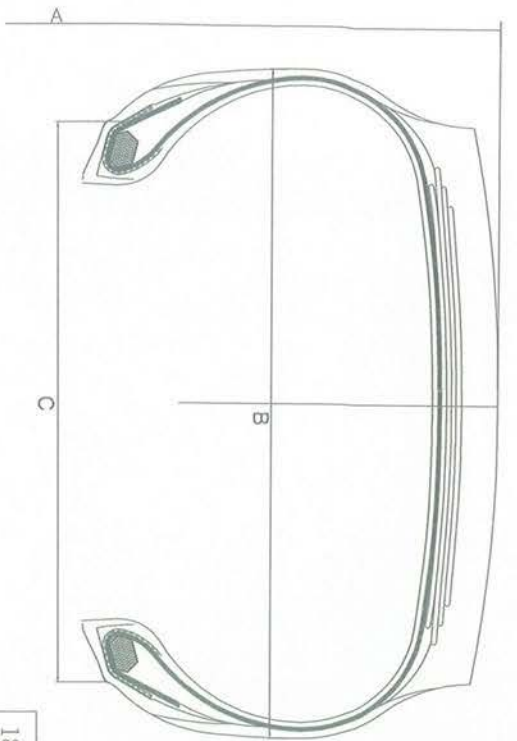
Suwat

Check by:

张艳

Draft by:

[Signature]



TREAD PATTERNS

TABLE 1

BRAND NAME	TREAD PATTERN NAME
LINGLONG	KWD600
SHANLING	KWD600
LEAO	KWD600
Infinity	KWD600
BENCHMARK	KWD600
BARKLEY	BLW18
CROSSWIND	CWD60W
SUMO FIRENZA	DRIVUS-WD

18	
17	TRACTION
16	M+S
15	**** (MOLD NUMBER)
14	RADIAL TUBELESS
13	BRAND TYRE HERE
12	PLIES: SIDEWALL 1 STEEL TREAD 1 STEEL + 4 STEEL MAX LOAD: SINGLE 3750 kg (8265 lbs) AT 825 kPa (120 psi) COLD L.R. J MAX LOAD: DUAL 3350 kg (7385 lbs) AT 825 kPa (120 psi) COLD
11	REGROOVABLE
10	**** (PRODUCTION DATE)
9	0041099
8	154/150 M AT 825 kPa
7	DOT...
6	RIM 9.00
5	MADE IN THAILAND
4	WARNING...
3	PLEASE SEE THE TABLE 1 ON THE LEFT
2	315/80R22.5
1	PLEASE SEE THE TABLE 1 ON THE LEFT

TYRE SIZE	LOAD INDEX	SPEED SYMBOL	TYPE	A (mm)	B (mm)	C (mm)
315/80R22.5	154/150	M	TL	1076	312	228.5

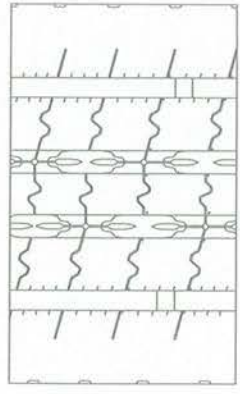
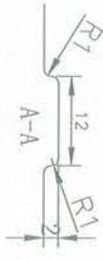
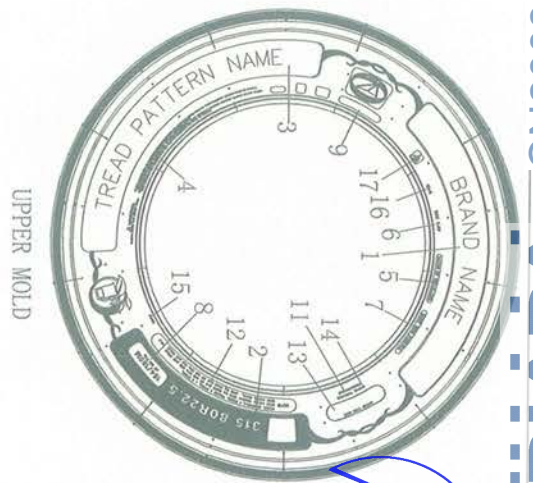
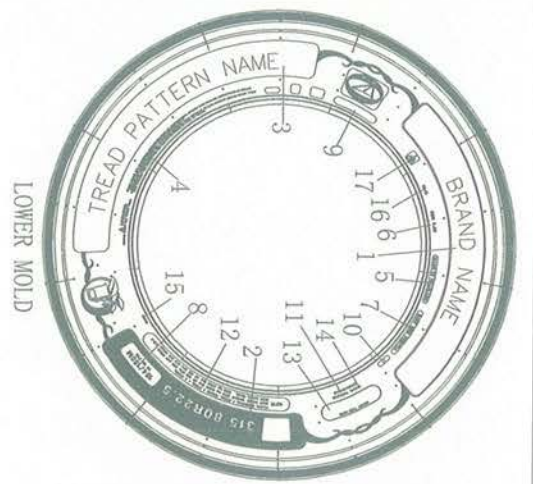
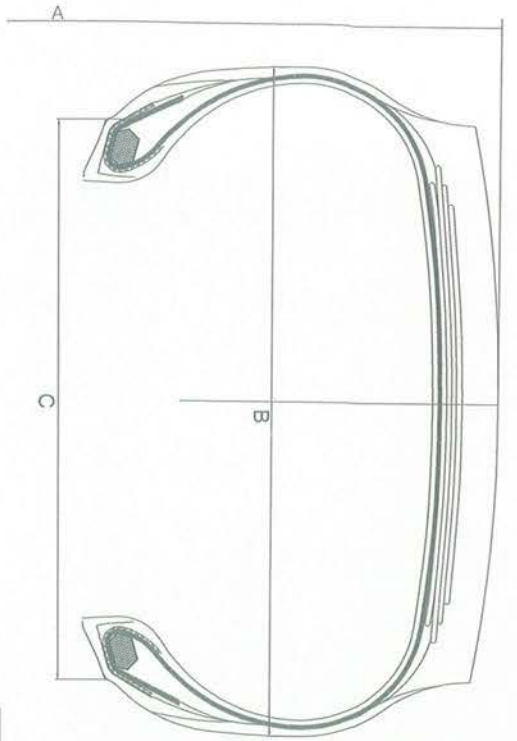
LOWER MOLD

UPPER MOLD

Approve by:

Check by:

Draft by:



TREAD PATTERNS

TABLE 1

BRAND NAME	TREAD PATTERN NAME
LINGLONG	ETS100
SHANLING	ETS100
LEAO	ETS100
Infinity	ETS100
BENCHMARK	ETS100
BARLEY	BL221
CROSSWIND	CWS10E
SUMO FIRENZA	DRIVUS-S

17		
16	M+S	
15	***** (MOLD NUMBER)	
14	RADIAL TUBELESS	
13	BRAND TYRE HERE	
12	PLIES: SIDEWALL 1 STEEL TREAD 1 STEEL + 4 STEEL MAX LOAD: SINGLE 3750 kg (8265 lbs) AT 825 kPa (120 psi) COLD LR. J MAX LOAD: DUAL 3350 kg (7385 lbs) AT 825 kPa (120 psi) COLD	
11	REGROOVABLE	
10	***** (PRODUCTION DATE)	
9	0041099	
8	154/150 M AT 825 kPa	
7	DOT...	
6	RIM 9.00	
5	MADE IN THAILAND	
4	WARNING...	
3	PLEASE SEE THE TABLE 1 ON THE LEFT	
2	315/80R22.5	
1	PLEASE SEE THE TABLE 1 ON THE LEFT	

TYRE SIZE	LOAD INDEX	SPEED SYMBOL	TYPE	A (mm)	B (mm)	C (mm)
315/80R22.5	154/150	M	TL	1076	312	228.5

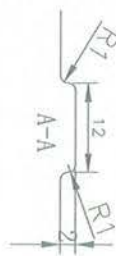
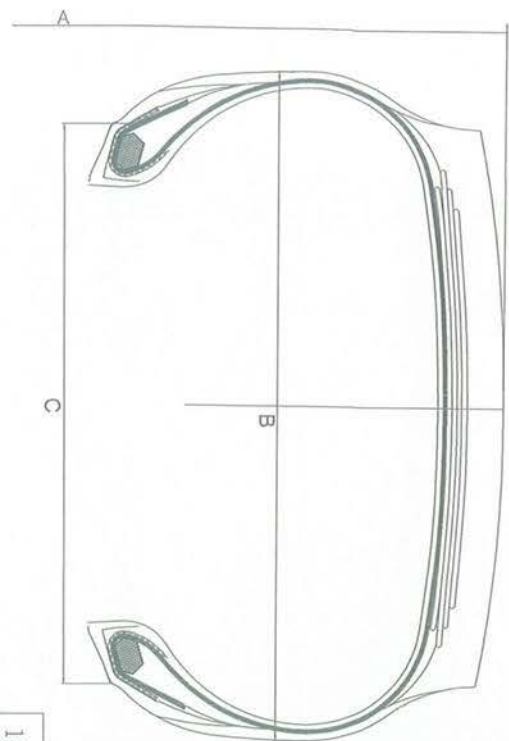
Approve by:

Check by:

Draft by:



RDW



TREAD PATTERNS

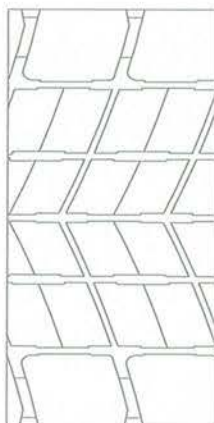
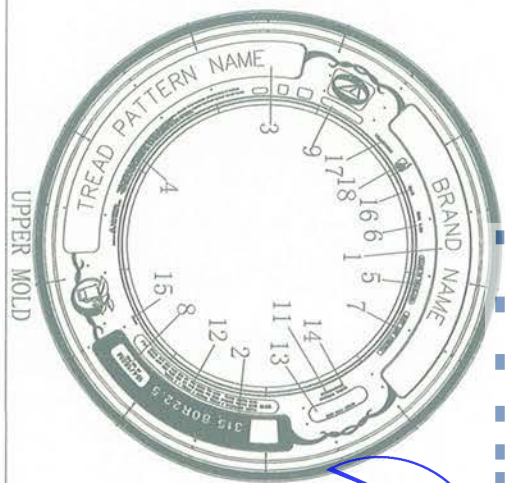
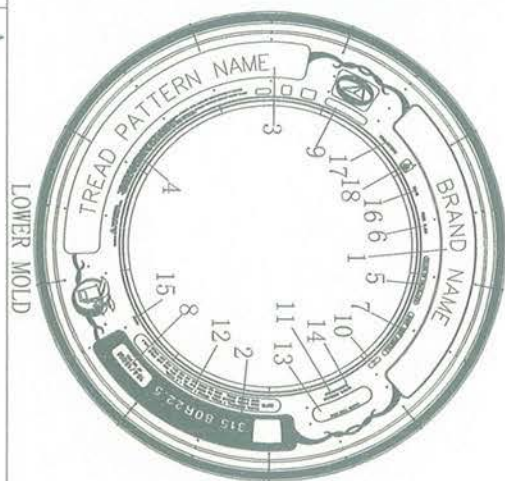


TABLE 1

BRAND NAME	TREAD PATTERN NAME
LINGLONG	ETD100
SHANLING	ETD100
LEAO	ETD100
Infinity	ETD100
BENCHMARK	ETD100
BARKLEY	BL831
CROSSWIND	CWD10E
GREEN MAX	GRD802
SUMO FIRENZA	DRIVUS-D

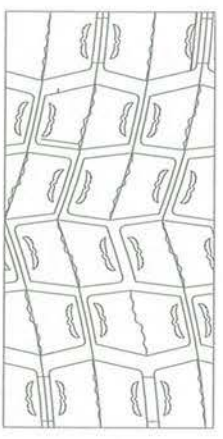
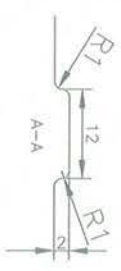
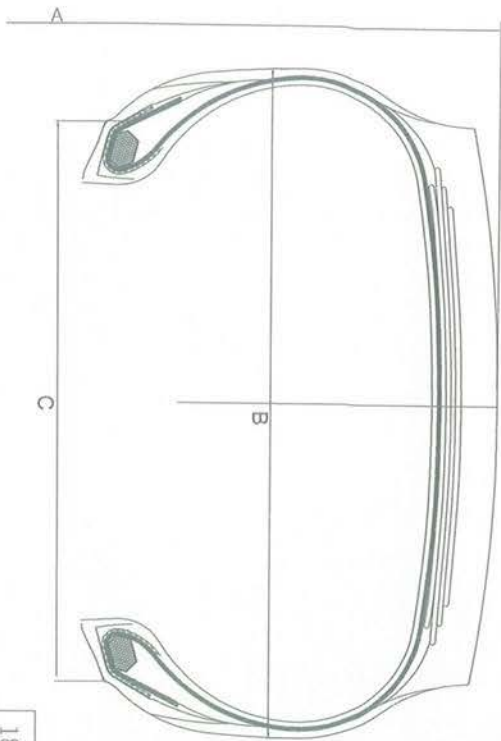


18	TRACTION				
17	M+S				
16	**** (MOLD NUMBER)				
15	RADIAL TUBELESS				
14	BRAND TYRE HERE				
13	PLIES: SIDEWALL 1 STEEL, TREAD 1 STEEL + 4 STEEL				
12	18PR MAX LOAD: SINGLE 3750 kg (8265 lbs) AT 825 kPa (120 psi) COLD LR. J				
	MAX LOAD: DUAL 3350 kg (7385 lbs) AT 825 kPa (120 psi) COLD				
11	REGROOVABLE				
10	**** (PRODUCTION DATE)				
9	0041099				
8	154/150 M AT 825 kPa				
7	DOT...				
6	RIM 9.00				
5	MADE IN THAILAND				
4	WARNING...				
3	PLEASE SEE THE TABLE 1 ON THE LEFT				
2	315/80R22.5				
1	PLEASE SEE THE TABLE 1 ON THE LEFT				
	LOWER MOLD		UPPER MOLD		
315/80R22.5	154/150	M	TL	1076	312
TYRE SIZE	LOAD INDEX	SPEED SYMBOL	TYPE	A (mm)	B (mm)
					C (mm)

Approve by:

Check by:

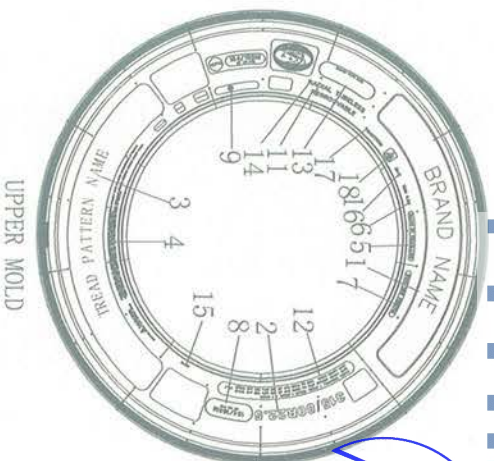
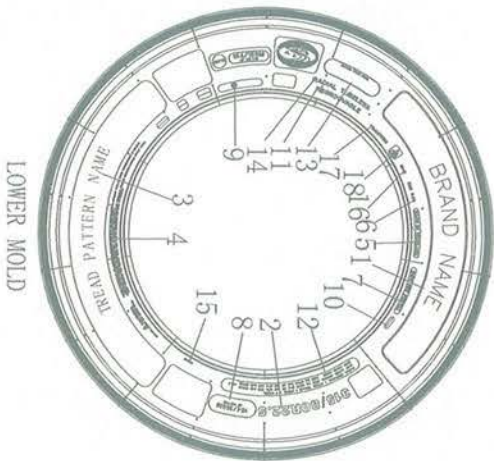
Draft by:



TREAD PATTERNS

TABLE 1

BRAND NAME	TREAD PATTERN NAME
LINGLONG	KTD300
SHANLING	KTD300
LEAO	KTD300
Infinity	KTD300
BENCHMARK	KTD300
BARKLEY	BL833
CROSSWIND	CWD30K
TECHKING	TASK DH



- 18 TRACTION
- 17 M+S
- 16 ***** (MOLD NUMBER)
- 15 RADIAL TUBELESS
- 14 BRAND TYRE HERE
- 13 PLES: SIDEWALL 1 STEEL, TREAD 1 STEEL + 4 STEEL.
- 12 MAX LOAD: SINGLE 3750 kg (8265 lbs) AT 825 kPa (120 psi) COLD L.R. J
- 11 MAX LOAD: DUAL 3350 kg (7385 lbs) AT 825 kPa (120 psi) COLD
- 10 REGRROOVABLE
- 9 ***** (PRODUCTION DATE)
- 8 (E4) 0041099
- 7 154/150 M AT 825 kPa
- 6 DOT. . .
- 5 RIM 9.00
- 4 MADE IN THAILAND
- 3 WARNING. . .
- 2 PLEASE SEE THE TABLE 1 ON THE LEFT
- 1 PLEASE SEE THE TABLE 1 ON THE LEFT

TYRE SIZE	LOAD INDEX	SPEED SYMBOL	TYPE	A (mm)	B (mm)	C (mm)
315/80R22.5	154/150	M	TL	1076	312	228, 5

Approve by:

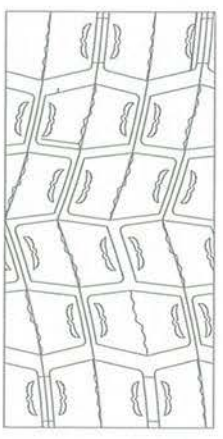
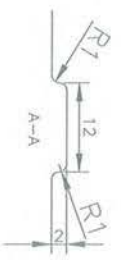
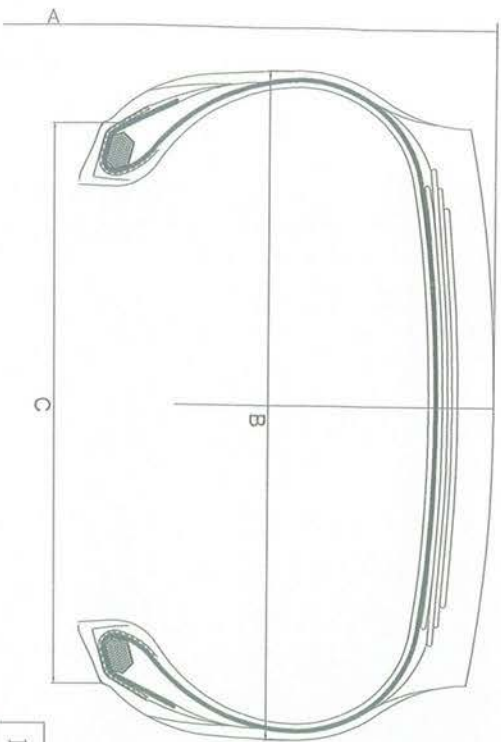
Signature

Check by:

Signature

Draft by:

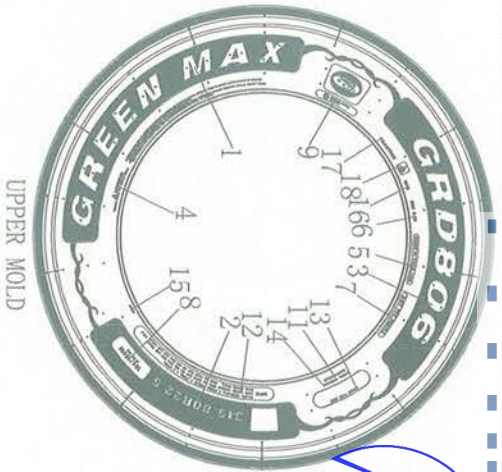
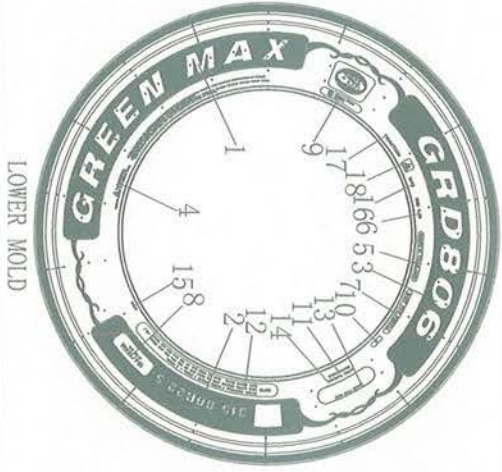
Signature



TREAD PATTERNS

TABLE 1

BRAND NAME	TREAD PATTERN NAME
GREEN MAX	GRD806



18	TRACTION						
17	M+S						
16	**** (MOLD NUMBER)						
15	RADIAL TUBELESS						
14	BRAND TYRE HERE						
13	18PR PILES: SIDEWALL 1 STEEL TREAD 1 STEEL + 4 STEEL						
12	MAX LOAD: SINGLE 3750 kg (8265 lbs) AT 825 kPa (120 psi) COLD L.R. J						
11	MAX LOAD: DUAL 3350 kg (7385 lbs) AT 825 kPa (120 psi) COLD						
10	REGROOVABLE						
9	**** (PRODUCTION DATE)						
8	(E4) 0041099						
7	154/150 M AT 825 kPa						
6	DOT...						
5	RIM 9.00						
4	MADE IN THAILAND						
3	WARNING...						
2	PLEASE SEE THE TABLE 1 ON THE LEFT						
1	315/80R22.5						
	LOWER MOLD						
	UPPER MOLD						
	315/80R22.5	154/150	M	TL	1076	312	228.5
	TYRE SIZE	LOAD INDEX	SPEED SYMBOL	TYPE	A (mm)	B (mm)	C (mm)

Approve by:

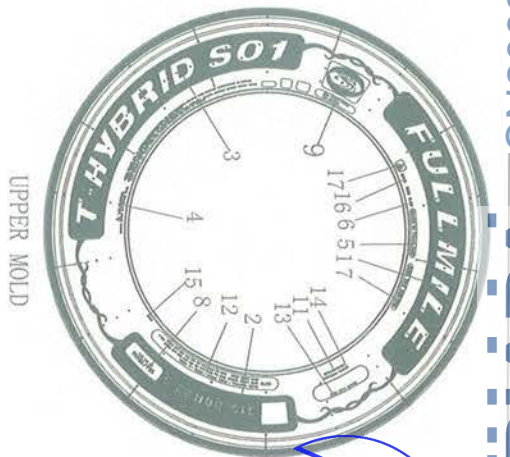
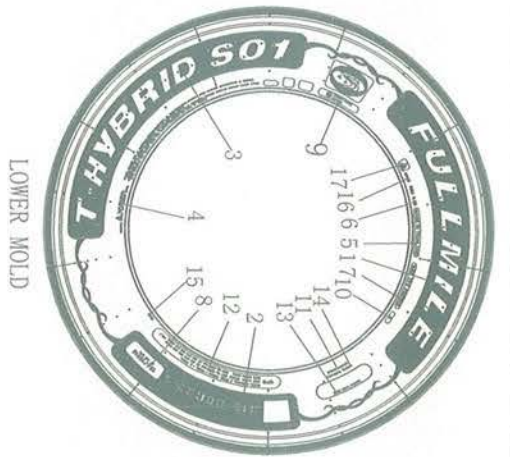
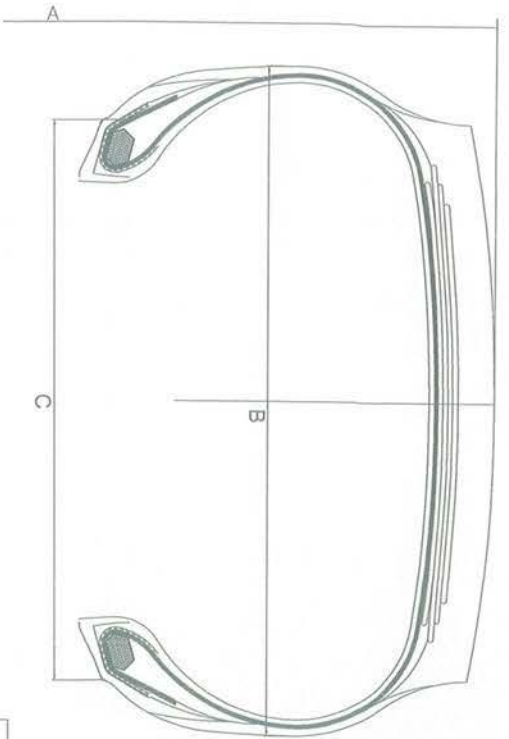
5.1.01

Check by:

张艳

Draft by:

Li B



TREAD PATTERNS

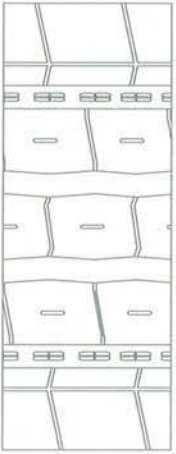


TABLE 1

BRAND NAME	TREAD PATTERN NAME
FULMILE	T-HYBRID SO1

17		M+S
16	**** (MOLD NUMBER)	
15	RADIAL TUBELESS	
14	BRAND TYRE HERE	
13	18PR PLYS: SIDEWALL 1 STEEL TREAD 1 STEEL + 4 STEEL	
12	MAX LOAD: SINGLE 3750 kg (8265 lbs) AT 825 kPa (120 psi) COLD L.R. J	
11	MAX LOAD: DUAL 3350 kg (7385 lbs) AT 825 kPa (120 psi) COLD	
10	REGROOVABLE	
9	**** (PRODUCTION DATE)	
8	(E4) 0041099	
7	154/150 M AT 825 kPa	
6	DOT...	
5	RIM 9.00	
4	MADE IN THAILAND	
3	WARNING...	
2	PLEASE SEE THE TABLE 1 ON THE LEFT	
1	PLEASE SEE THE TABLE 1 ON THE LEFT	
	LOWER MOLD	UPPER MOLD

315/80R22.5	154/150	M	TL	1076	312	228.5
TYRE SIZE	LOAD INDEX	SPEED SYMBOL	TYPE	A (mm)	B (mm)	C (mm)

Approve by:

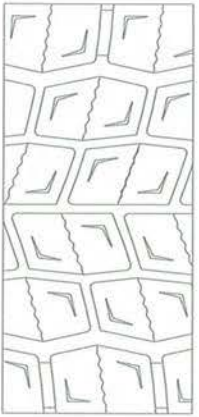
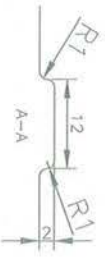
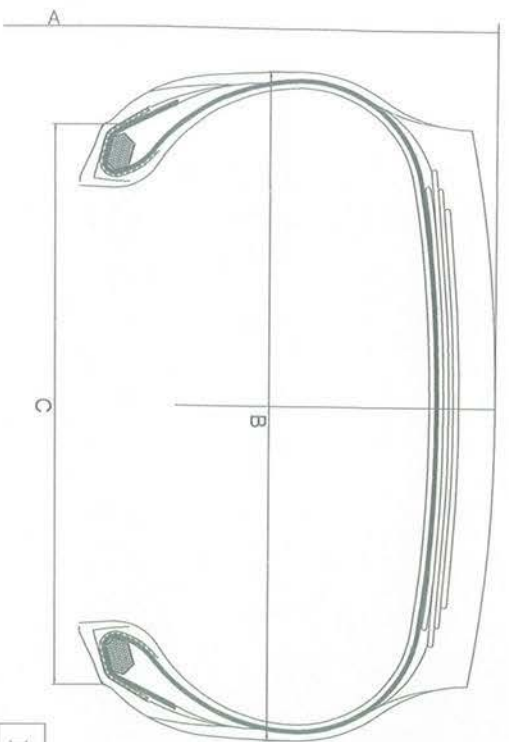
Sun

Check by:

张艳

Draft by:

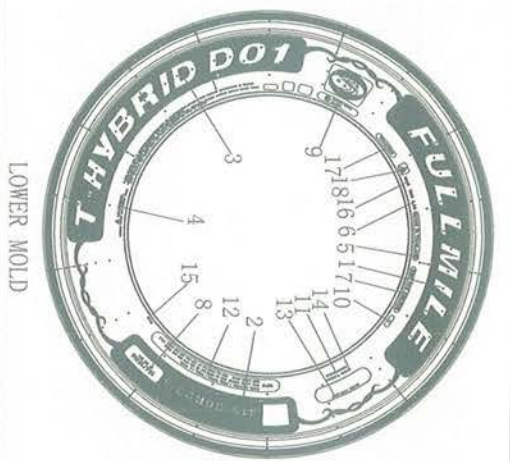
王



TREAD PATTERNS

TABLE 1

BRAND NAME	TREAD PATTERN NAME
FULMILE	T-HYBRID D01



18		TRACTION				
17	M+S	***** (MOLD NUMBER)				
16	***** (MOLD NUMBER)	RADIAL TUBELESS				
15	***** (MOLD NUMBER)	BRAND TYRE HERE				
14	18PR PILES: SIDEWALL 1 STEEL TREAD 1 STEEL + 4 STEEL					
13	MAX LOAD: SINGLE 3750 kg (8265 lbs) AT 825 kPa (120 psi) COLD	LR. J				
12	MAX LOAD: DUAL 3350 kg (7385 lbs) AT 825 kPa (120 psi) COLD					
11	REGROOVABLE					
10	***** (PRODUCTION DATE)					
9	(E4) 0041099					
8	154/150 M AT 825 kPa					
7	DOT...					
6	RIM 9.00					
5	MADE IN THAILAND					
4	WARNING...					
3	PLEASE SEE THE TABLE 1 ON THE LEFT					
2	315/80R22.5					
1	PLEASE SEE THE TABLE 1 ON THE LEFT					
	LOWER MOLD	UPPER MOLD				
315/80R22.5	154/150	M	TL	1076	312	228.5
TYRE SIZE	LOAD INDEX	SPEED SYMBOL	TYPE	A (mm)	B (mm)	C (mm)

Approve by:

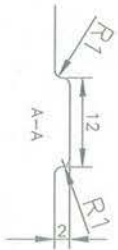
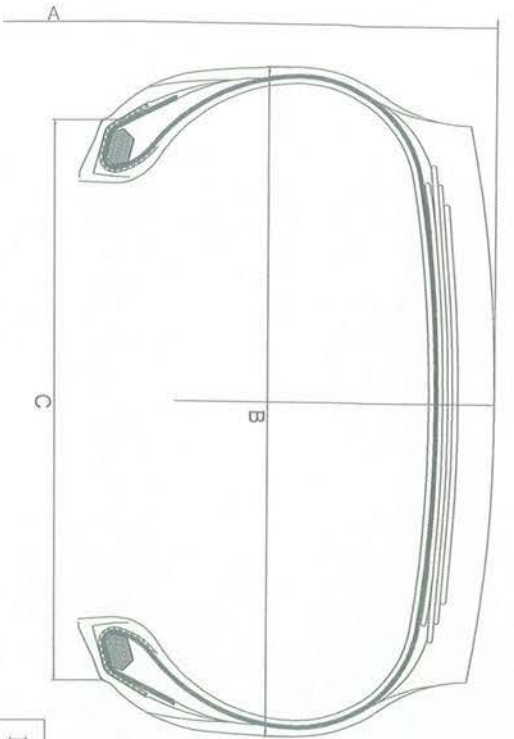
张艳

Check by:

张艳

Draft by:

张艳

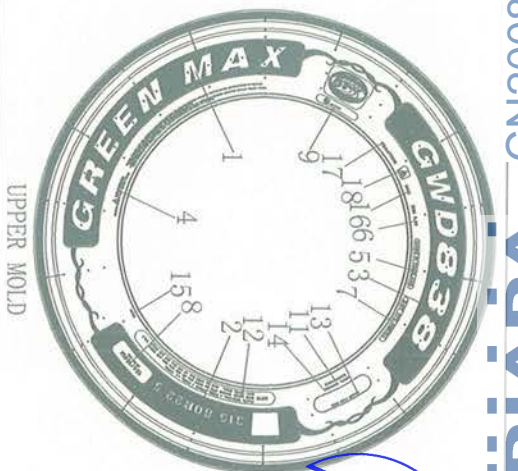



TREAD PATTERNS



TABLE 1

BRAND NAME	TREAD PATTERN NAME
GREEN MAX	GWD838

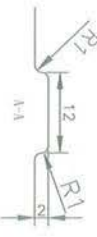
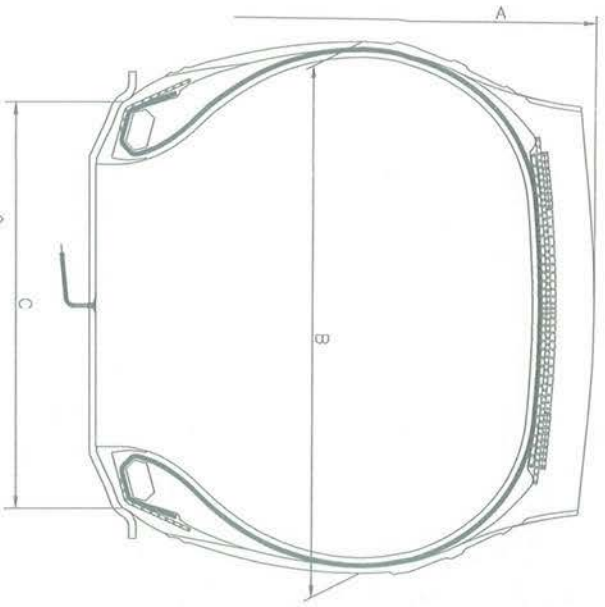


18		TRACTION				
17		M+S				
16		**** (MOLD NUMBER)				
15		RADIAL TUBELESS				
14		BRAND TYRE HERE				
13		18PR PLYS: SIDEWALL 1 STEEL TREAD 1 STEEL + 4 STEEL				
12		MAX LOAD: SINGLE 3750 kg (8265 lbs) AT 825 kPa (120 psi) COLD L.R. J				
11		MAX LOAD: DUAL 3350 kg (7385 lbs) AT 825 kPa (120 psi) COLD				
10		REGROOVABLE				
9		**** (PRODUCTION DATE)				
8		(E4) 0041099				
7		154/150 M AT 825 kPa				
6		DOT...				
5		RIM 9.00				
4		MADE IN THAILAND				
3		WARNING...				
2		PLEASE SEE THE TABLE 1 ON THE LEFT				
1		PLEASE SEE THE TABLE 1 ON THE LEFT				
	LOWER MOLD	UPPER MOLD				
315/80R22.5	154/150	M	TL	1076	312	228.5
TYRE SIZE	LOAD INDEX	SPEED SYMBOL	TYPE	A (mm)	B (mm)	C (mm)

Approve by: 

Check by: 

Draft by: 



TREAD PATTERNS

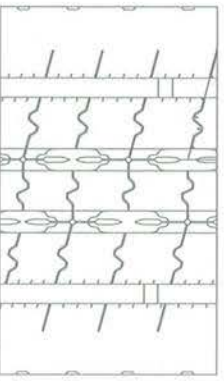
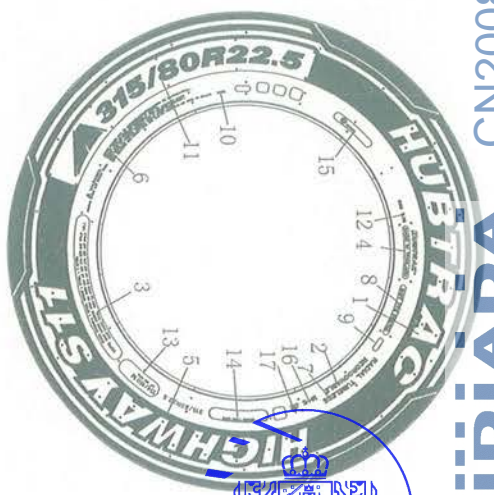


TABLE 1

BRAND NAME	TREAD PATTERN NAME
HUBTRAC	HIGHWAY S11



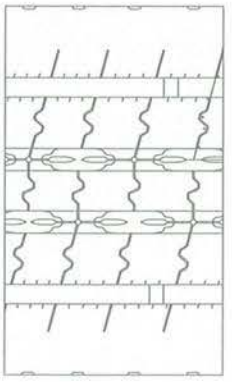
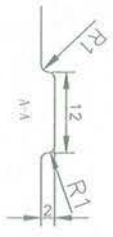
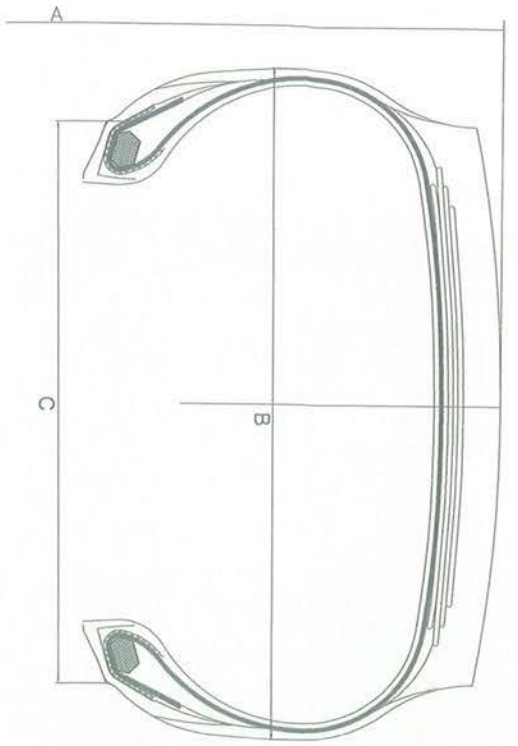
17	▲						
16	M+S						
15	ⓔ4	0041099					
14	BRAND TYRE HERE						
13	154/150 M						
	AT 825 kPa						
12	RIM 9.00						
11	315/80R22.5						
10	**** (MOLD NUMBER)						
9	**** (PRODUCTION DATE)						
8	DOT ...						
7	RADIAL TUBELESS						
6	WARNING.....						
5	PLEASE SEE THE TABLE 1 ON THE LEFT						
4	MADE IN THAILAND						
3	PILES: SIDEWALL 1 STEEL, TREAD 1 STEEL+3 STEEL						
	18PR MAX LOAD: SINGLE	3750 kg (8265 lbs) AT	825 kPa (120 psi) COLD				L.R. J
	MAX LOAD: DUAL	3350 kg (7385 lbs) AT	825 kPa (120 psi) COLD				
2	REGROOVABLE						
1	PLEASE SEE THE TABLE 1 ON THE LEFT						
	UPPER MOLD		LOWER MOLD				

315/80R22.5	154/150	M	TL	1076	312	228.5
TYRE SIZE	LOAD INDEX	SPEED SYMBOL	TYPE	A (mm)	B (mm)	C (mm)

Approve by:

Check by:

Draft by:



TREAD PATTERNS

TABLE 1

BRAND NAME	TREAD PATTERN NAME
HUBTRAC	HIGHWAY S11



79108002NC CN20082NC APPII

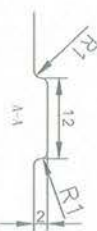
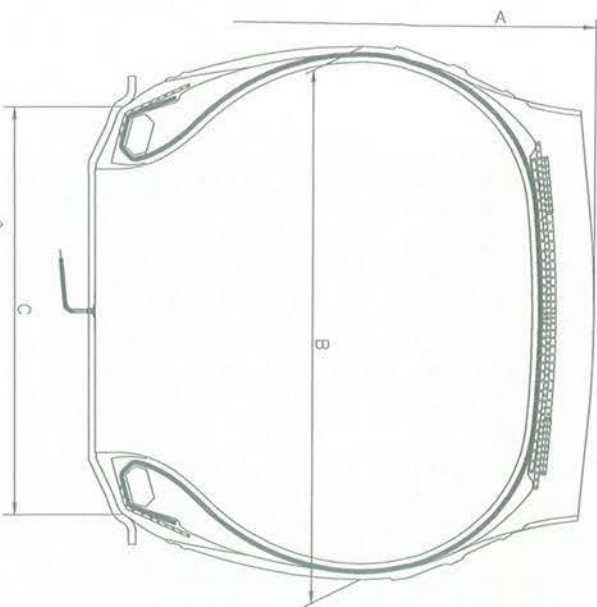
17						
16	M+S					
15	0041099					
14	BRAND TYRE HERE					
13	154/150 M AT 825 kPa					
12	RIM 9.00					
11	315/80R22.5					
10	**** (MOLD NUMBER)					
9						**** (PRODUCTION DATE)
8	DOT ...					
7	RADIAL TUBELESS					
6	WARNING.....					
5	PLEASE SEE THE TABLE 1 ON THE LEFT					
4	MADE IN THAILAND					
3	PILES: SIDEWALL 1 STEEL TREAD 1 STEEL+4 STEEL 18PR MAX LOAD:SINGLE 3750 kg (8265 lbs) AT 825 kPa(120 psi) COLD LR. J MAX LOAD:DUAL 3350 kg (7385 lbs) AT 825 kPa(120 psi) COLD					
2	REGROOVABLE					
1	PLEASE SEE THE TABLE 1 ON THE LEFT					
	UPPER MOLD					LOWER MOLD

315/80R22.5	154/150	M	TL	1076	312	228.5
TYRE SIZE	LOAD INDEX	SPEED SYMBOL	TYPE	A (mm)	B (mm)	C (mm)

Approve by:

Check by:

Draft by:



TREAD PATTERNS

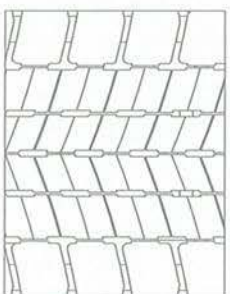


TABLE 1

BRAND NAME	TREAD PATTERN NAME
HUBTRAC	HIGHWAY D11



18	TRACTION	
17		
16	M+S	
15	Ⓜ 0041099	
14	BRAND TYRE HERE	
13	154/150 M AT 825 kPa	
12	RIM 9.00	
11	315/80R22.5	
10	**** (MOLD NUMBER)	
9		**** (PRODUCTION DATE)
8	DOT ...	
7	RADIAL TUBELESS	
6	WARNING.....	
5	PLEASE SEE THE TABLE 1 ON THE LEFT	
4	MADE IN THAILAND	
3	PIES: SIDEWALL 1 STEEL TREAD 1 STEEL+3 STEEL 18PR MAX LOAD: SINGLE 3750 kg (8265 lbs) AT 825 kPa (120 psi) COLD LR. J MAX LOAD: DUAL 3350 kg (7385 lbs) AT 825 kPa (120 psi) COLD	
2	REGROOVABLE	
1	PLEASE SEE THE TABLE 1 ON THE LEFT	
	UPPER MOLD	LOWER MOLD

315/80R22.5	154/150	M	TL	1076	312	228.5
TYRE SIZE	LOAD INDEX	SPEED SYMBOL	TYPE	A (mm)	B (mm)	C (mm)

Approve by:

Sund

Check by:

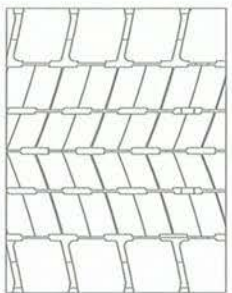
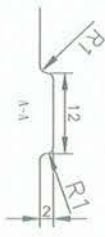
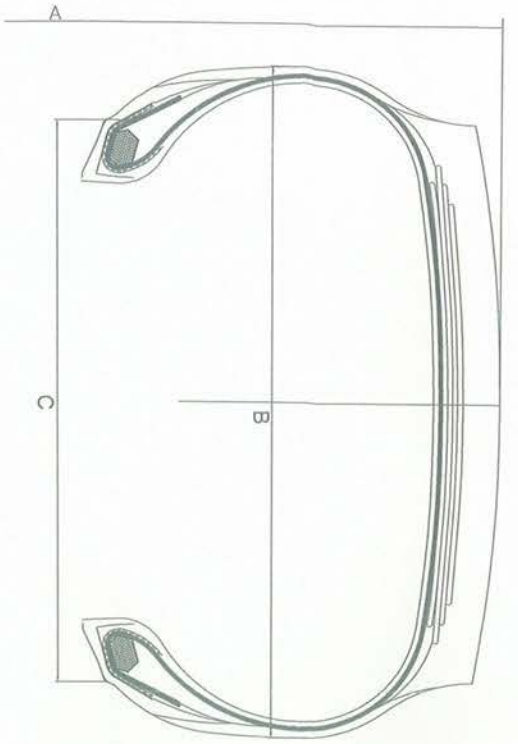
张艳

Draft by:

Ji

79208002NC CN20080791





TREAD PATTERNS

TABLE 1

BRAND NAME	TREAD PATTERN NAME
HUBTRAC	HIGHWAY D11



18	TRACTION	
17		
16	M+S	
15	Ⓜ 0041099	
14	BRAND TYRE HERE	
13	154/150 M AT 825 kPa	
12	RIM 9.00	
11	315/80R22.5	
10	**** (MOLD NUMBER)	
9		**** (PRODUCTION DATE)
8	DOT	
7	RADIAL TUBELESS	
6	WARNING.....	
5	PLEASE SEE THE TABLE 1 ON THE LEFT	
4	MADE IN THAILAND	
3	PLIES: SIDEWALL 1 STEEL TREAD 1 STEEL+4 STEEL 18PR MAX LOAD: SINGLE 3750 kg (8265 lbs) AT 825 kPa(120 psi) COLD LR. J MAX LOAD: DUAL 3350 kg (7385 lbs) AT 825 kPa(120 psi) COLD	
2	REGROOVABLE	
1	PLEASE SEE THE TABLE 1 ON THE LEFT	
	UPPER MOLD	LOWER MOLD

315/80R22.5	154/150	M	TL	1076	312	228.5
TYRE SIZE	LOAD INDEX	SPEED SYMBOL	TYPE	A (mm)	B (mm)	C (mm)

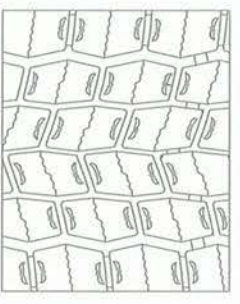
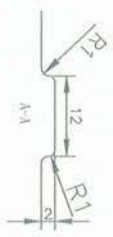
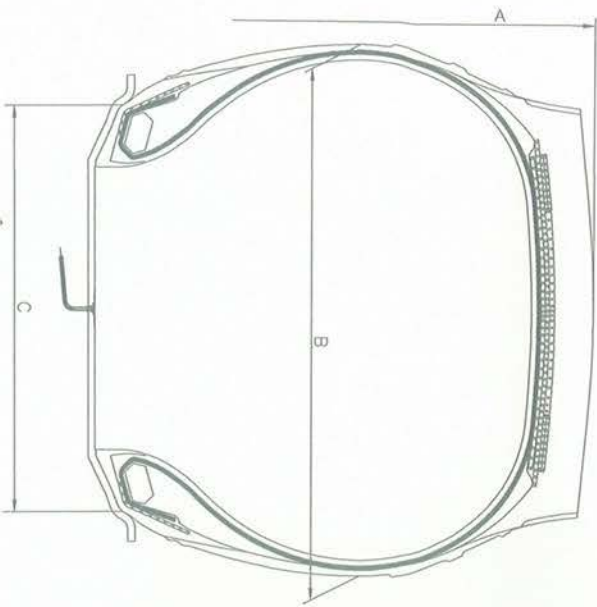
Approve by:

Check by:

Draft by:

79108002NC CN20080296





TREAD PATTERNS

TABLE 1

BRAND NAME	TREAD PATTERN NAME
HUBTRAC	REGIONAL D11



18	TRACTION	
17		
16	M+S	
15	(E4) 0041099	
14	BRAND TYRE HERE	
13	154/150 M AT 825 kPa	
12	RIM 9.00	
11	315/80R22.5	
10	**** (MOLD NUMBER)	
9		**** (PRODUCTION DATE)
8	DOT ...	
7	RADIAL TUBELESS	
6	WARNING.....	
5	PLEASE SEE THE TABLE 1 ON THE LEFT	
4	MADE IN THAILAND	
3	PLIES: SIDEWALL 1 STEEL TREAD 1 STEEL+3 STEEL 18PR MAX LOAD: SINGLE 3750 kg (8265 lbs) AT 825 kPa (120 psi) COLD MAX LOAD: DUAL 3350 kg (7385 lbs) AT 825 kPa (120 psi) COLD	LR. J
2	REGROOVABLE	
1	PLEASE SEE THE TABLE 1 ON THE LEFT	
	UPPER MOLD	LOWER MOLD

315/80R22.5	154/150	M	TL	1076	312	228.5
TYRE SIZE	LOAD INDEX	SPEED SYMBOL	TYPE	A (mm)	B (mm)	C (mm)

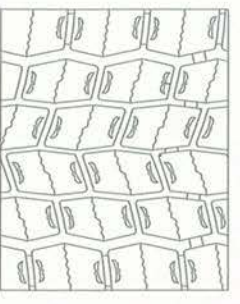
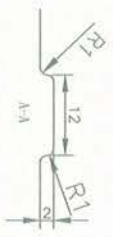
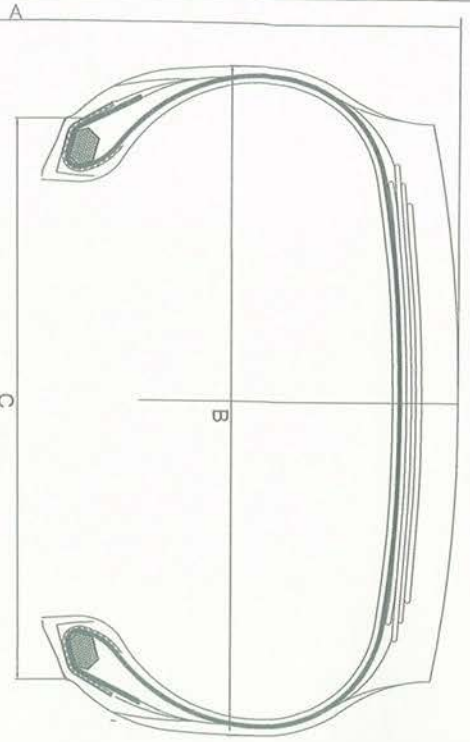
Approve by:

Check by:

Draft by:

79108002N3 CN200802N3





TREAD PATTERNS

TABLE 1

BRAND NAME	TREAD PATTERN NAME
HUBTRAC	REGIONAL D11



18	TRACTION	
17		
16	M+S	
15	E4 0041099	
14	BRAND TYRE HERE	
13	154/150 M AT 825 kPa	
12	RIM 9.00	
11	315/80R22.5	
10	**** (MOLD NUMBER)	
9		**** (PRODUCTION DATE)
8	DOT ...	
7	RADIAL TUBELESS	
6	WARNING.....	
5	PLEASE SEE THE TABLE 1 ON THE LEFT	
4	MADE IN THAILAND	
3	PIES: SIDEWALL 1 STEEL TREAD 1 STEEL+4 STEEL 18PR MAX LOAD: SINGLE 3750 kg (8265 lbs) AT 825 kPa(120 psi) COLD LR. J MAX LOAD: DUAL 3350 kg (7385 lbs) AT 825 kPa(120 psi) COLD	
2	REGROOVABLE	
1	PLEASE SEE THE TABLE 1 ON THE LEFT	
	UPPER MOLD	LOWER MOLD

315/80R22.5	154/150	M	TL	1076	312	228.5
TYRE SIZE	LOAD INDEX	SPEED SYMBOL	TYPE	A (mm)	B (mm)	C (mm)

Approve by:

Check by:

Draft by:

79108002NC3 HUBTRAC



REPORT No. CN20080767**APPROVAL OF PNEUMATIC TYRES FOR COMMERCIAL VEHICLES
AND THEIR TRAILERS REFERRING TO UN REGULATION NO. 54R00/23**

Approval number	: E4*54R00/23*41099*07
Applicant	: LLIT (THAILAND) CO., LTD.
Manufacturer	: LLIT (THAILAND) CO., LTD. 911/9 Moo 5, Khaokhansong, Sriracha, Chonburi 20110, Thailand
Brand-name(s)/trademark(s)	: LINGLONG; SHANLING; LEAO; Infinity; Benchmark; ATLAS TIRE; ZEETEX; BARKLEY; GREEN MAX; CROSSWIND; BENCHMARK; TECHKING; FINIXX; SUMO FIRENZA; FULLMILE; <u>HUBTRAC</u>
Trade description(s)/Commercial name(s)	: LLF02; SF02; LF02; BF02; LTL812; STL812; ATL812; ITL812; BTL812; AP-100; LAU603; SAU603; AAU603; IAU603; BAU603; AP-200; HT-12 EXTRA; ETS100; BL221; CWS10E; ETD100; BL831; GRD802; CWD10E; KTD300; BL833; GRD806; CWD30K; KWD600; BLW18; GWD838; CWD60W; LLA08; SA08; LA08; BA08; AT-08CC; TASK DH; D960; SD960; LD960; BD960; BL809; FMT153D; DRV- 960; LDW807; SDW807; ADW807; IDW807; BDW807; BLW08; DRIVUS-S; DRIVUS-D; DRIVUS-WD; T-HYBRID D01; T-HYBRID S01; AP-100 [®] ; DRV-OS [®] ; BL601; <u>HIGHWAY D11</u> ; <u>HIGHWAY S11</u> ; <u>REGIONAL D11</u> ; <u>MIXED G11</u>
Tyre size designation	: 315/80R22.5
Place and date of test report issue	: L'Albornar, Santa Oliva (Tarragona) 26/08/2020

Tested pneumatic tyre **FULFILS** with the specifications regarding to the type approval of approval of pneumatic tyre referring to the Supplement 23 to the original version of the UN Regulation NO. 54 as specified in the annex of this report.

Performed by:

Zhaocai (Frank) Yu
TEST ENGINEER

Revised by:

Josep Masip Gomez
DEPARTMENT MANAGER

ANNEX TO THE REPORT

Reason(s) for extension:

- Addition of brand name: HUBTRAC
- Addition of trade description: HIGHWAY D11; HIGHWAY S11; REGIONAL D11; MIXED G11
- The technical service is changed into IDIADA

The test result of construction variant 1: SIDEWALL 1 STEEL TREAD 1 STEEL+3 STEEL , as below:

1. TECHNICAL DESCRIPTION OF THE PNEUMATIC TYRE:

Brand-name(s)/trademark(s)	:	LINGLONG	
Trade description(s)/Commercial name(s)	:	LLF02	
Tyre-size designation	:	315/80R22.5	
Category of use	:	normal / snow / special	
Structure	:	diagonal / bias-belted / radial	
Speed category index	:	nominal	: M
		additional	: ---
Load-capacity index	:	nominal:	single : 154
			twinned : 150
		additional:	single : ---
			twinned : ---
X of the manufacturer /	:	0.75	
Tyre cross-section	:	See technical documentation	

2. TYRE MARKING

2.1. Compulsory Marking

Approval mark	
Approval mark Height a > 12 mm	: Yes
Tyre definition marking height	
Tyre size b > 6 mm	: Yes
Load and speed index b > 6 mm	: Yes



* THE PRESENTED RESULTS REFER ONLY TO THE TESTED SAMPLE
 * THE PARTIAL REPRODUCTION OF THIS REPORT WITHOUT THE PERMISSION OF IDIADA IS COMPLETELY FORBIDDEN

2.2. Additional Marking

“M+S” / “M.S” / “M&S”	:	M+S
“TUBELESS”	:	YES
Index of inflation pressure	:	825 kPa
Ply rating	:	18
“ET” / “ML” / “MPT” / “POR”	:	N.A.
“REGROOVABLE”	:	YES
Date of manufacture	:	0218
Height of these marking $c > 4$ mm	:	YES

3. TEST RESULTS.

Sample Reception dates	:	27/02/2018
Place and test dates	:	27/02/2018 – 01/03/2018 Linglong Testing Center (Zhaoyuan, China)
Sample Id.	:	CN18020331
Measure rim code	:	9 × 22.5
Test rim Code	:	9 × 22.5

3.1. Pneumatic tyre measurement

Mounting pressure in measuring rim	:	P(1m) = 8.25 bar
Conditioning temperature	:	Temp. = 25 °C
Adjusted pressure before conditioning	:	P(2m) = 8.25 bar
Readjusted pressure after 24 hours	:	P(3m) = 8.25 bar



* THE PRESENTED RESULTS REFER ONLY TO THE TESTED SAMPLE
 * THE PARTIAL REPRODUCTION OF THIS REPORT WITHOUT THE PERMISSION OF IDIADA IS COMPLETELY FORBIDDEN

3.1.1. Tyre width measurement:

Measures of **overall width** at six equally-spaced points:

Point	Overall width (mm)
1	316.4
2	315.7
3	316.0
4	315.7
5	315.9
6	315.5
Point	Maximum width (mm)
1	316.1

3.1.2. Tyre section width calculation:

S = 312 (mm) given by Annex 5/Calculation

Or

$$S = S_1 + K(A-A_1)$$

Nominal section width (mm)	315
K coefficient	0.4
Measuring rim Width (mm)	228.6
X of the manufacturer	0.75
Theoretical rim Width (mm)	236.25

Maximum measured width (mm)	Section width (mm)	Difference (%)
316.4	312	1.41

The overall width of a tyre may be less than the section or exceed the value by the following percentages: 8% structure diagonal; 4 % structure radial. For section with exceed 305mm shall not exceed the value by the following percentages: 4% structure diagonal; 2 % structure radial of nominal aspect higher than 60.

FULFILS / DOES NOT FULFIL



* THE PRESENTED RESULTS REFER ONLY TO THE TESTED SAMPLE
 * THE PARTIAL REPRODUCTION OF THIS REPORT WITHOUT THE PERMISSION OF IDIADA IS COMPLETELY FORBIDDEN

3.1.3. Outer diameter measurement

Maximum circumference (mm)	Outer diameter (mm) $D_{i\ ext} = \frac{L}{\pi}$
3365	1071.1

3.1.4. Tyre outer diameter calculation:

$$D = d + 2H$$

Conventional number of the nominal rim(mm)	d = 572 mm
Nominal section width (mm)	315
Nominal aspect ratio	80
Factor a	0.97
Factor b	Radial: 1.04 (Normal), 1.06 (Special) Diagonal: 1.08 (Normal), 1.09 (Special)
Nominal section height (mm)	H = 252 mm

Dmin $D_{min} = d + 2(H \times a)$	Outer diameter D (measured)	Dmax $D_{max} = d + 2(H \times b)$
1060 mm	1071.1 mm	1107 mm
Dmin < D < Dmax		

FULFILS / DOES NOT FULFIL



3.2 Load/speed performance test

3.2.1 For tyres with speed category Q and above:

Test Conditions

Speed category	N.A.
Load capacity index	N.A.
Maximum velocity (km/h)	N.A.
Test axle load (kg)	N.A.
Maximum speed during the test (km/h)	N.A.
Load of axle during the test (kg)	N.A.
Inflation tyre pressure before conditioning(kpa)	N.A.
Conditioning time wheel-tyre assembly(hour)	N.A.
Readjusted tyre pressure after conditioning (kpa)	N.A.
Test wheel diameter (m)	N.A.
Temperature (°C)	N.A.

Test cycle

Step	Duration (min)	Speed (km/h)
1	N.A.	N.A.
2	N.A.	N.A.
3	N.A.	N.A.
4	N.A.	N.A.
TOTAL	N.A.	



* THE PRESENTED RESULTS REFER ONLY TO THE TESTED SAMPLE
 * THE PARTIAL REPRODUCTION OF THIS REPORT WITHOUT THE PERMISSION OF IDIADA IS COMPLETELY FORBIDDEN

3.2.2 Tyres with speed category symbol P and below:

Test Conditions

Speed category	M
Load capacity index	154
Maximum velocity (km/h)	130
Test drum speed during the test (km/h)	72
Load of axle during the test (kg) (100%)	3750
Inflation tyre pressure before conditioning(kpa)	825
Conditioning time wheel-tyre assembly(hour)	3
Readjusted tyre pressure after conditioning (kpa)	825
Test wheel diameter (m)	1.7
Temperature (°C)	27

Test cycle

Step	Duration (h)	Load (kg)	
1	7	66%	2475
2	16	84%	3150
3	24	101%	3787.5
TOTAL	47		

3.2.3 Tyre measurement

Outer diameter measurement at the start of test	1071.1 mm
Outer diameter measurement at the end of test	1078.4 mm
Percentage of the change in outer diameter measurement (%)	0.68



3.3. Test results

3.3.1. The outer diameter of the tyre, measured six hours after the load/speed endurance test, must not differ by more than $\pm 3.5\%$ from the outer diameter as measured before the test.

FULFILS / ~~DOES NOT FULFIL~~

3.3.2. Once passed the load/speed endurance test, the tyre must not exhibit any tread separation, ply separation, cord separation, chunking or broken cords.

FULFILS / ~~DOES NOT FULFIL~~

Test Place : Linglong Testing Center (Zhaoyuan, China)

Test Date : 27/02/2018 – 01/03/2018



* THE PRESENTED RESULTS REFER ONLY TO THE TESTED SAMPLE
* THE PARTIAL REPRODUCTION OF THIS REPORT WITHOUT THE PERMISSION OF IDIADA IS COMPLETELY FORBIDDEN

The test result of construction variant 1: SIDEWALL 1 STEEL TREAD 1 STEEL+4 STEEL , as below:

4. TECHNICAL DESCRIPTION OF THE PNEUMATIC TYRE:

Brand-name(s)/trademark(s)	:	LINGLONG
Trade description(s)/Commercial name(s)	:	LLF02
Tyre-size designation	:	315/80R22.5
Category of use	:	normal /snow / special
Structure	:	diagonal / bias-belted / radial
Speed category index	:	nominal : M additional : ---
Load-capacity index	:	nominal: single : 154 twinned : 150 additional: single : --- twinned : ---
X of the manufacturer /	:	0.75
Tyre cross-section	:	See technical documentation

5. TYRE MARKING

5.1. Compulsory Marking

Approval mark	:	Yes
Approval mark Height a > 12 mm	:	Yes
Tyre definition marking height	:	Yes
Tyre size b > 6 mm	:	Yes
Load and speed index b > 6 mm	:	Yes



* THE PRESENTED RESULTS REFER ONLY TO THE TESTED SAMPLE
 * THE PARTIAL REPRODUCTION OF THIS REPORT WITHOUT THE PERMISSION OF IDIADA IS COMPLETELY FORBIDDEN

5.2. Additional Marking

“M+S” / “M.S” / “M&S”	:	M+S
“TUBELESS”	:	YES
Index of inflation pressure	:	825 kPa
Ply rating	:	18
“ET” / “ML” / “MPT” / “POR”	:	N.A.
“REGROOVABLE”	:	YES
Date of manufacture	:	0218
Height of these marking $c > 4$ mm	:	YES

6. TEST RESULTS.

Sample Reception dates	:	27/02/2018
Place and test dates	:	27/02/2018 – 01/03/2018 Linglong Testing Center (Zhaoyuan, China)
Sample Id.	:	CN18020331
Measure rim code	:	9 × 22.5
Test rim Code	:	9 × 22.5

6.1. Pneumatic tyre measurement

Mounting pressure in measuring rim	:	P(1m) = 8.25 bar
Conditioning temperature	:	Temp. = 25 °C
Adjusted pressure before conditioning	:	P(2m) = 8.25 bar
Readjusted pressure after 24 hours	:	P(3m) = 8.25 bar



* THE PRESENTED RESULTS REFER ONLY TO THE TESTED SAMPLE
 * THE PARTIAL REPRODUCTION OF THIS REPORT WITHOUT THE PERMISSION OF IDIADA IS COMPLETELY FORBIDDEN

6.1.1. Tyre width measurement:

 Measures of **overall width** at six equally-spaced points:

Point	Overall width (mm)
1	312.6
2	312.9
3	312.5
4	312.5
5	312.7
6	312.9
Point	Maximum width (mm)
2,6	312.9

6.1.2. Tyre section width calculation:
 $S = 312$ (mm) given by Annex 5/Calculation

Or

$$S = S_1 + K(A - A_1)$$

Nominal section width (mm)	315
K coefficient	0.4
Measuring rim Width (mm)	228.6
X of the manufacturer	0.75
Theoretical rim Width (mm)	236.25

Maximum measured width (mm)	Section width (mm)	Difference (%)
312.9	312	0.29

The overall width of a tyre may be less than the section or exceed the value by the following percentages: 8% structure diagonal; 4 % structure radial. For section with exceed 305mm shall not exceed the value by the following percentages: 4% structure diagonal; 2 % structure radial of nominal aspect higher than 60.

FULFILS / DOES NOT FULFIL



6.1.3. Outer diameter measurement

Maximum circumference (mm)	Outer diameter (mm) $D_{i\ ext} = \frac{L}{\pi}$
3381	1076.2

6.1.4. Tyre outer diameter calculation:

$$D = d + 2H$$

Conventional number of the nominal rim(mm)	d = 572 mm
Nominal section width (mm)	315
Nominal aspect ratio	80
Factor a	0.97
Factor b	Radial:1.04 (Normal), 1.06(Special) Diagonal:1.08 (Normal), 1.09(Special)
Nominal section height (mm)	H = 252 mm

Dmin $D_{min} = d + 2(H \times a)$	Outer diameter D (measured)	Dmax $D_{max} = d + 2(H \times b)$
1060 mm	1076.2 mm	1107 mm
Dmin < D < Dmax		

FULFILS / DOES NOT FULFIL



6.2 Load/speed performance test

6.2.1 For tyres with speed category symbol Q and above:

Test Conditions

Speed category	N.A.
Load capacity index	N.A.
Maximum velocity (km/h)	N.A.
Test axle load (kg)	N.A.
Maximum speed during the test (km/h)	N.A.
Load of axle during the test (kg)	N.A.
Inflation tyre pressure before conditioning(kpa)	N.A.
Conditioning time wheel-tyre assembly(hour)	N.A.
Readjusted tyre pressure after conditioning (kpa)	N.A.
Test wheel diameter (m)	N.A.
Temperature (°C)	N.A.

Test cycle

Step	Duration (min)	Speed (km/h)
1	N.A.	N.A.
2	N.A.	N.A.
3	N.A.	N.A.
4	N.A.	N.A.
TOTAL	N.A.	



6.2.2 Tyres with speed category symbol P and below:

Test Conditions

Speed category	M
Load capacity index	154
Maximum velocity (km/h)	130
Test drum speed during the test (km/h)	72
Load of axle during the test (kg) (100%)	3750
Inflation tyre pressure before conditioning(kpa)	825
Conditioning time wheel-tyre assembly(hour)	3
Readjusted tyre pressure after conditioning (kpa)	825
Test wheel diameter (m)	1.7
Temperature (°C)	27

Test cycle

Step	Duration (h)	Load (kg)	
1	7	66%	2475
2	16	84%	3150
3	24	101%	3787.5
TOTAL	47		

6.2.3 Tyre measurement

Outer diameter measurement at the start of test	1076.2 mm
Outer diameter measurement at the end of test	1077.8 mm
Percentage of the change in outer diameter measurement (%)	0.15



6.3. Test results

6.3.1. The outer diameter of the tyre, measured six hours after the load/speed endurance test, must not differ by more than $\pm 3.5\%$ from the outer diameter as measured before the test.

FULFILS / ~~DOES NOT FULFIL~~

6.3.2. Once passed the load/speed endurance test, the tyre must not exhibit any tread separation, ply separation, cord separation, chunking or broken cords.

FULFILS / ~~DOES NOT FULFIL~~

Test Place : Linglong Testing Center (Zhaoyuan, China)

Test Date : 27/02/2018 – 01/03/2018



Zhaocai (Frank) Yu
TEST ENGINEER

